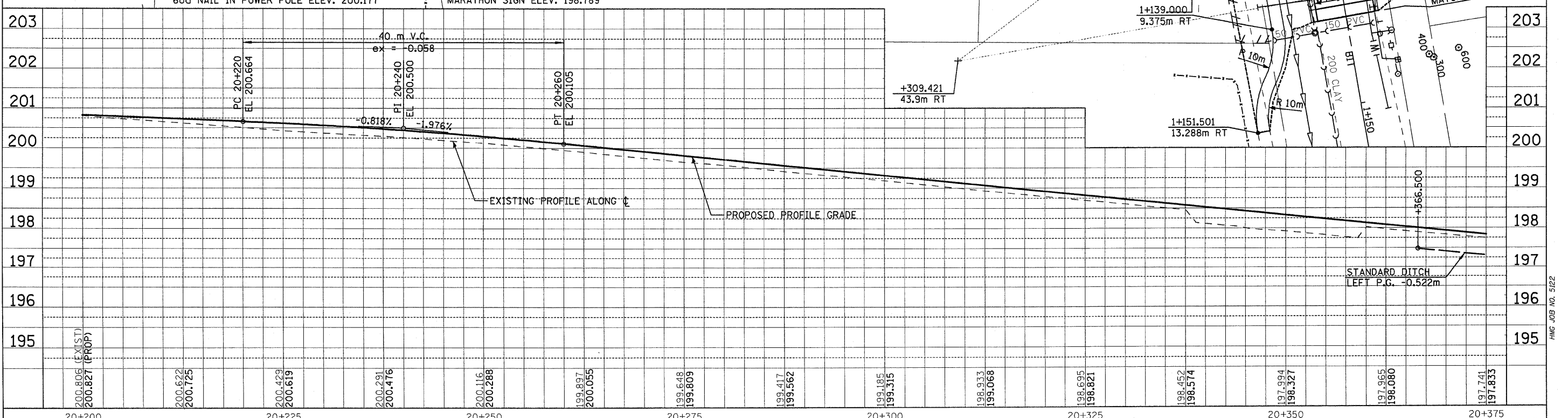
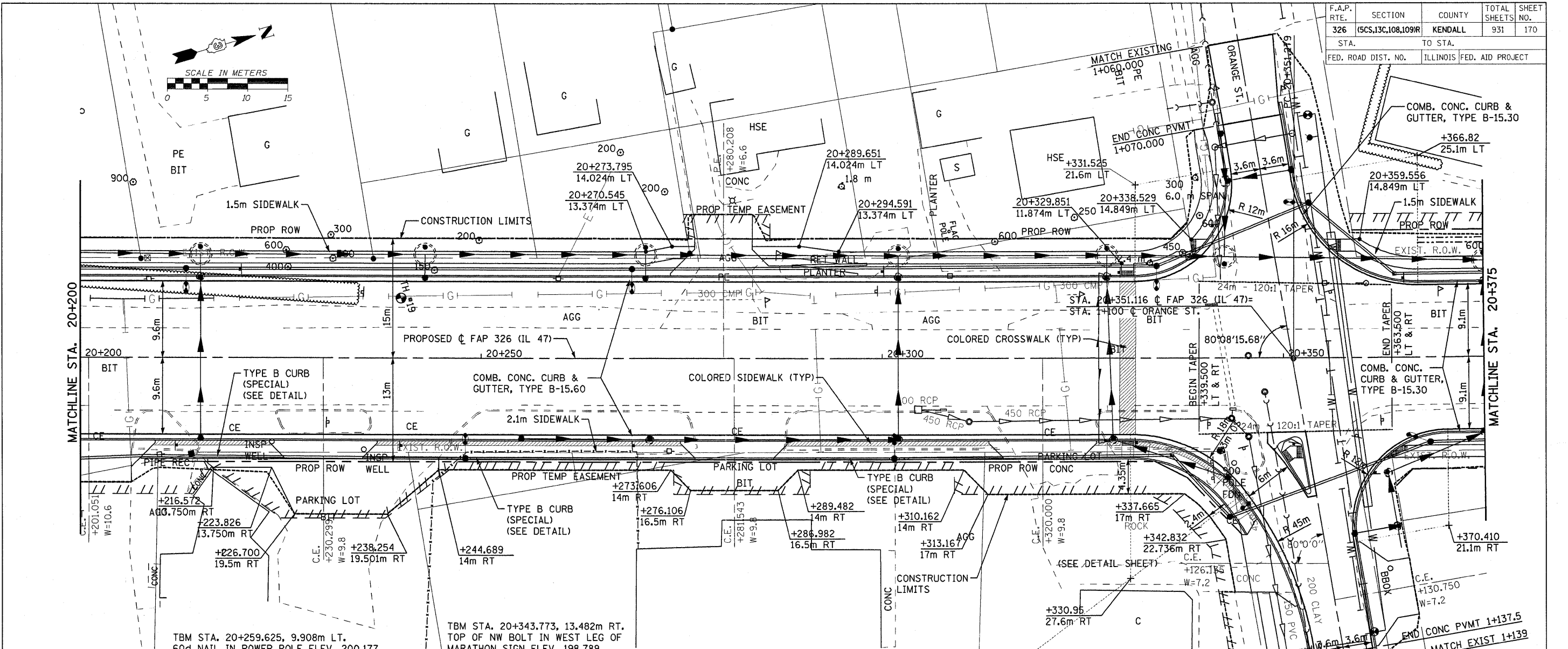
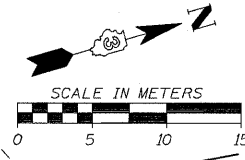


F.A.P. RTE.	SECTION	COUNTY	TOTAL SHEETS NO.	SHEET NO.
326	(5CS,13C,108,109)R	KENDALL	931	170
STA. 1+060.000		TO STA. 1+137.500		
FED. ROAD DIST. NO.		ILLINOIS FED. AID PROJECT		



Sheet: 14
Angle: 74.2214
Chart: P_11L47

FILE: 170pp47_14.dgn
PLOTTED: 8/22/2011

HMG JOB NO. 5122