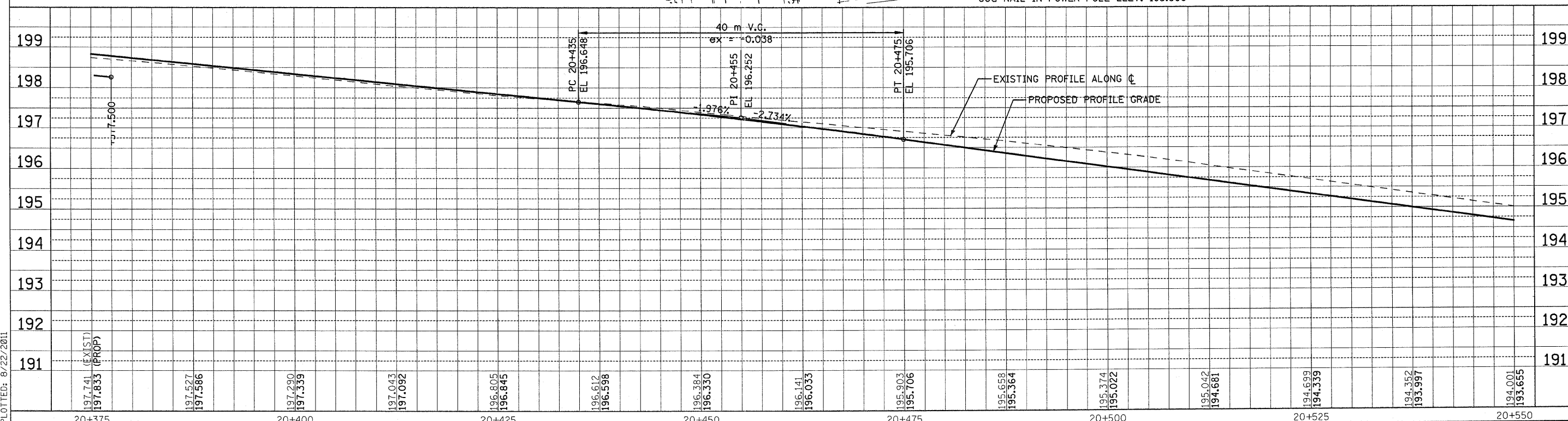
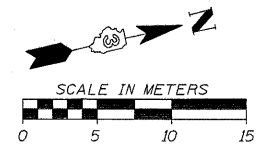
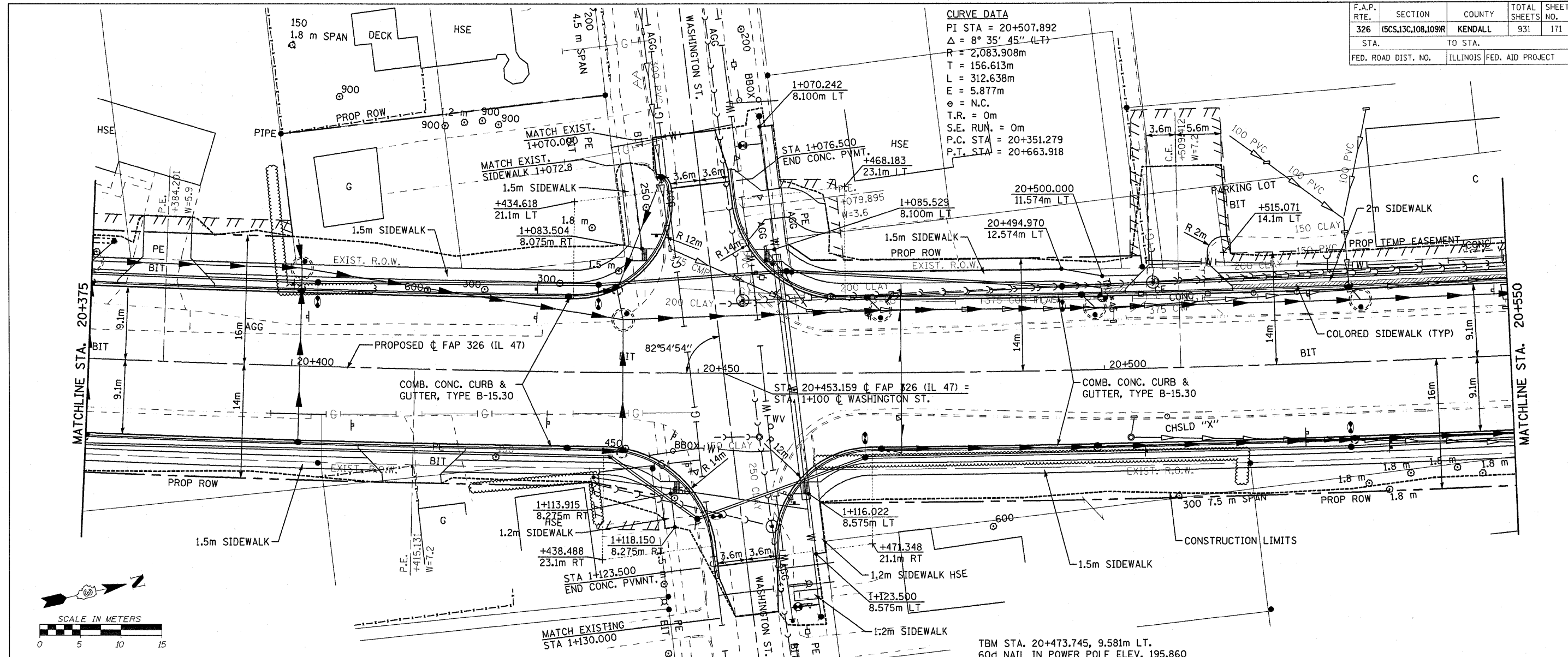


F.A.P. RTE.	SECTION	COUNTY	TOTAL SHEETS	SHEET NO.
326	(5CS,13C,108,109)R	KENDALL	931	171
STA.		TO STA.		
FED. ROAD DIST. NO.		ILLINOIS FED. AID PROJECT		

**CURVE DATA**  
 PI STA = 20+507.892  
 $\Delta = 8^\circ 35' 45" (LT)$   
 $R = 2,083.908m$   
 $T = 156.613m$   
 $L = 312.638m$   
 $E = 5.877m$   
 $e = N.C.$   
 $T.R. = 0m$   
 $S.E. RUN. = 0m$   
 $P.C. STA = 20+351.279$   
 $P.T. STA = 20+663.918$



FILE: 171bp47\_15.dgn  
 PLOTTED: 8/22/2011  
 Sheet: 15  
 Angle: 17.2351  
 Char: P\_1L47