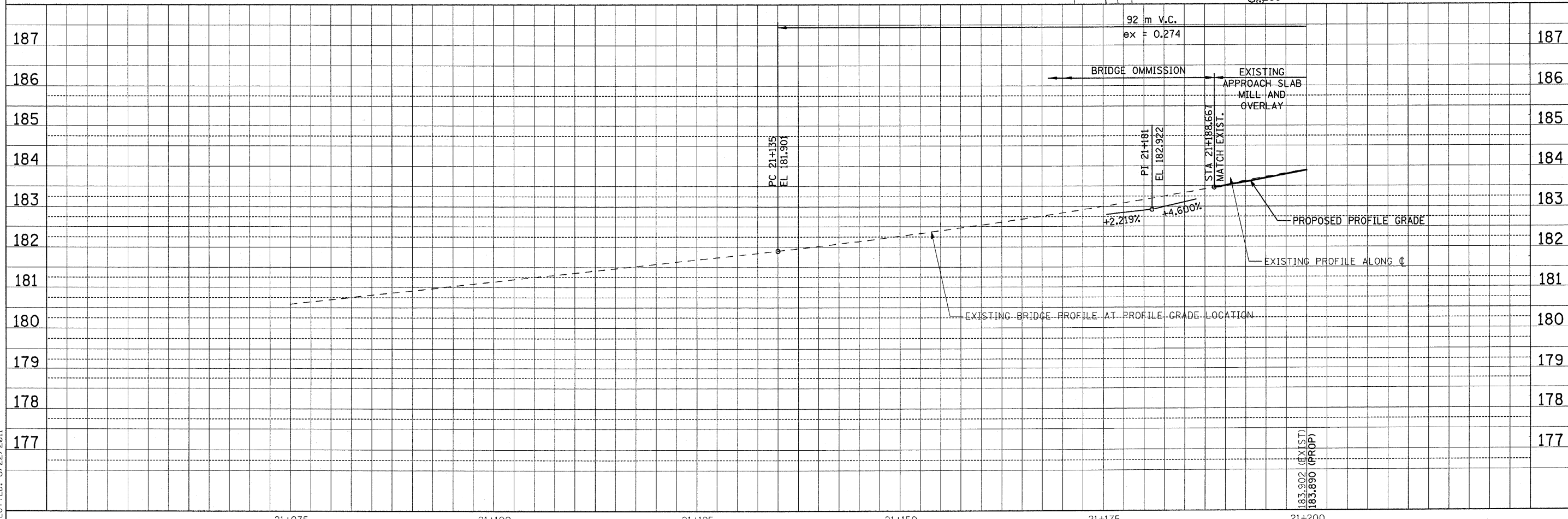
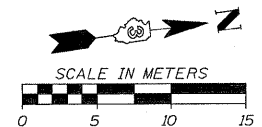
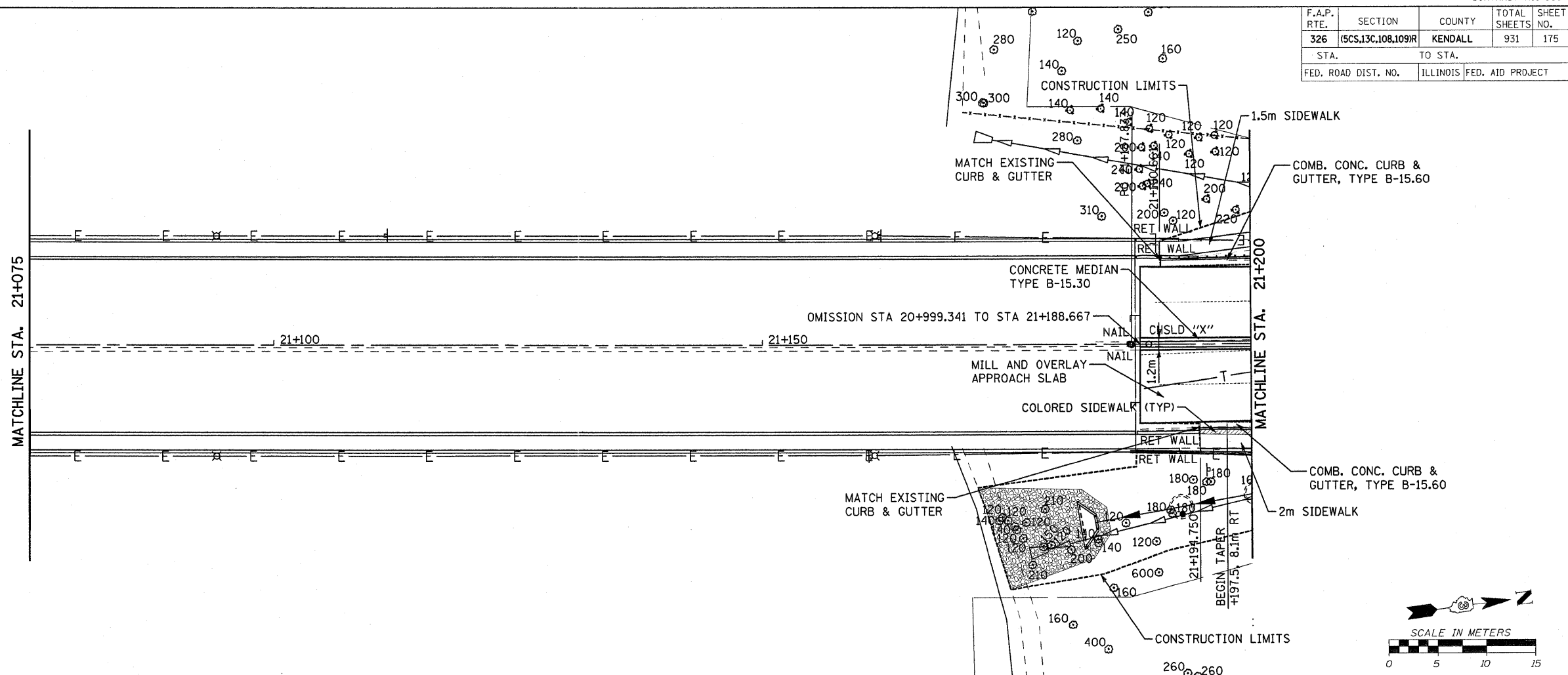


F.A.P. RTE.	SECTION	COUNTY	TOTAL SHEETS	SHEET NO.
326	(5CS,13C,108,109R)	KENDALL	931	175
STA.		TO STA.		
FED. ROAD DIST. NO.		ILLINOIS FED. AID PROJECT		



FILE: 175pp47\_19.dgn  
 PLOTTED: 8/22/2011

Sheet: 19  
 Angle: 82.4199  
 Chain: P\_11.47

HMG JOB NO. 5122