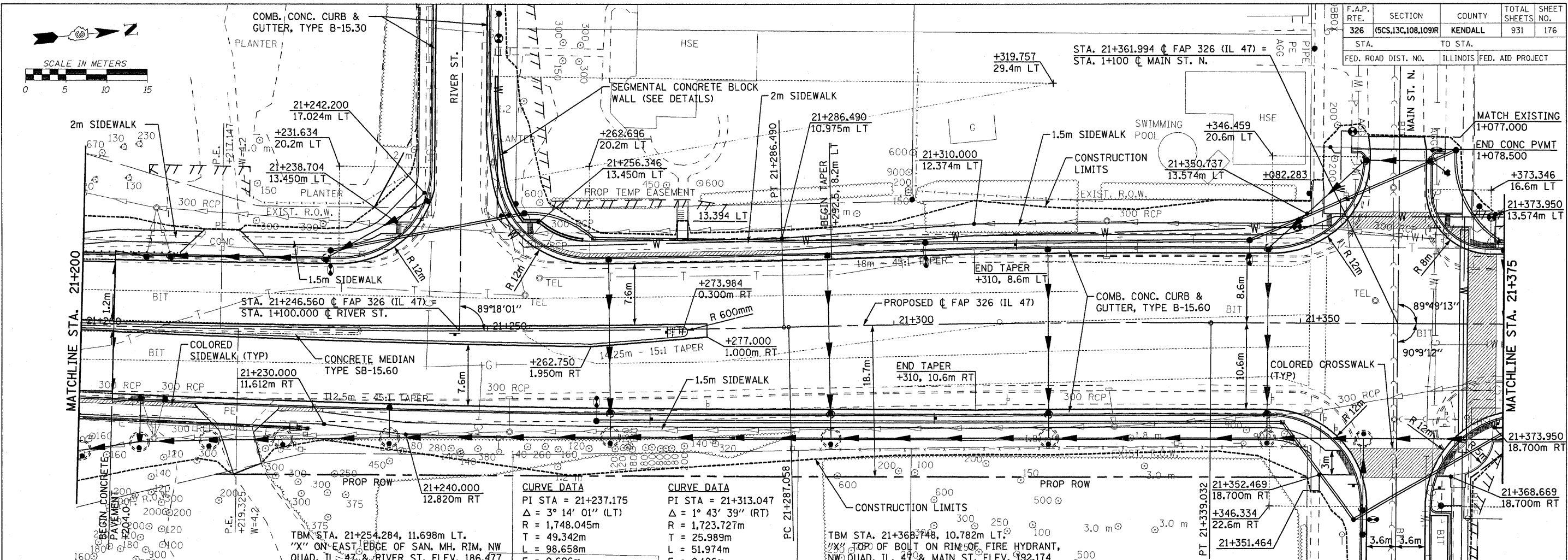
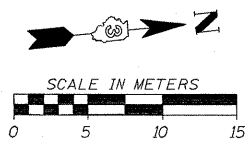
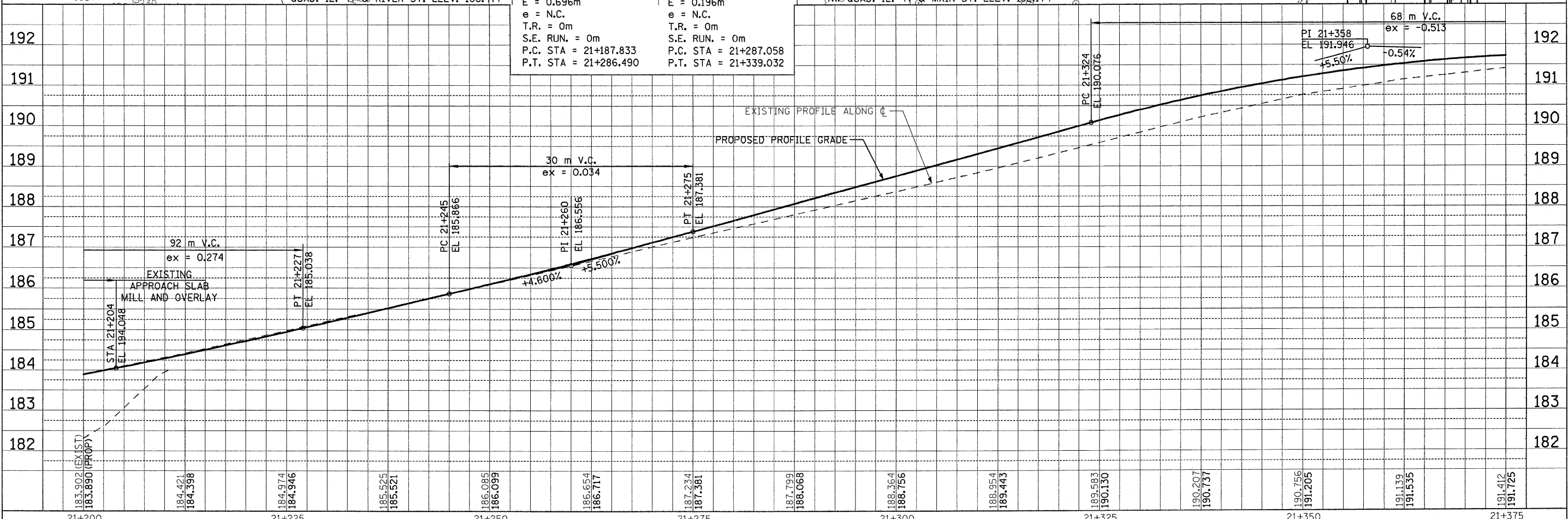


F.A.P. RTE.	SECTION	COUNTY	TOTAL SHEETS	SHEET NO.
326	(5CS,13C,108,109)R	KENDALL	931	176
STA. TO STA.		FED. ROAD DIST. NO. ILLINOIS FED. AID PROJECT		



CURVE DATA		CURVE DATA	
PI STA = 21+237.175	$\Delta = 3^\circ 14' 01''$ (LT)	PI STA = 21+313.047	$\Delta = 1^\circ 43' 39''$ (RT)
R = 1,748.045m	T = 49.342m	R = 1,723.727m	T = 25.989m
L = 98.658m	E = 0.696m	L = 51.974m	E = 0.196m
e = N.C.	T.R. = 0m	e = N.C.	T.R. = 0m
S.E. RUN. = 0m	P.C. STA = 21+187.833	S.E. RUN. = 0m	P.C. STA = 21+287.058
P.T. STA = 21+286.490		P.T. STA = 21+339.032	



FILE: 176pe47\_20.dgn  
PLOTTED: 8/22/2011

Sheet: 20  
Angle: 84.3224  
Chain: P-1147

HMG JOB NO. 5122