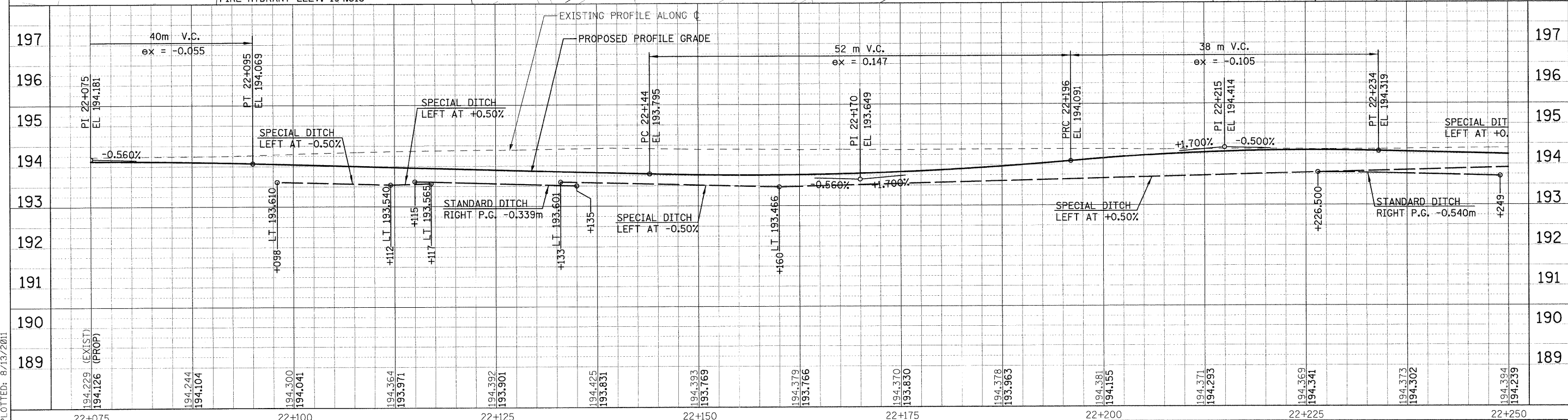
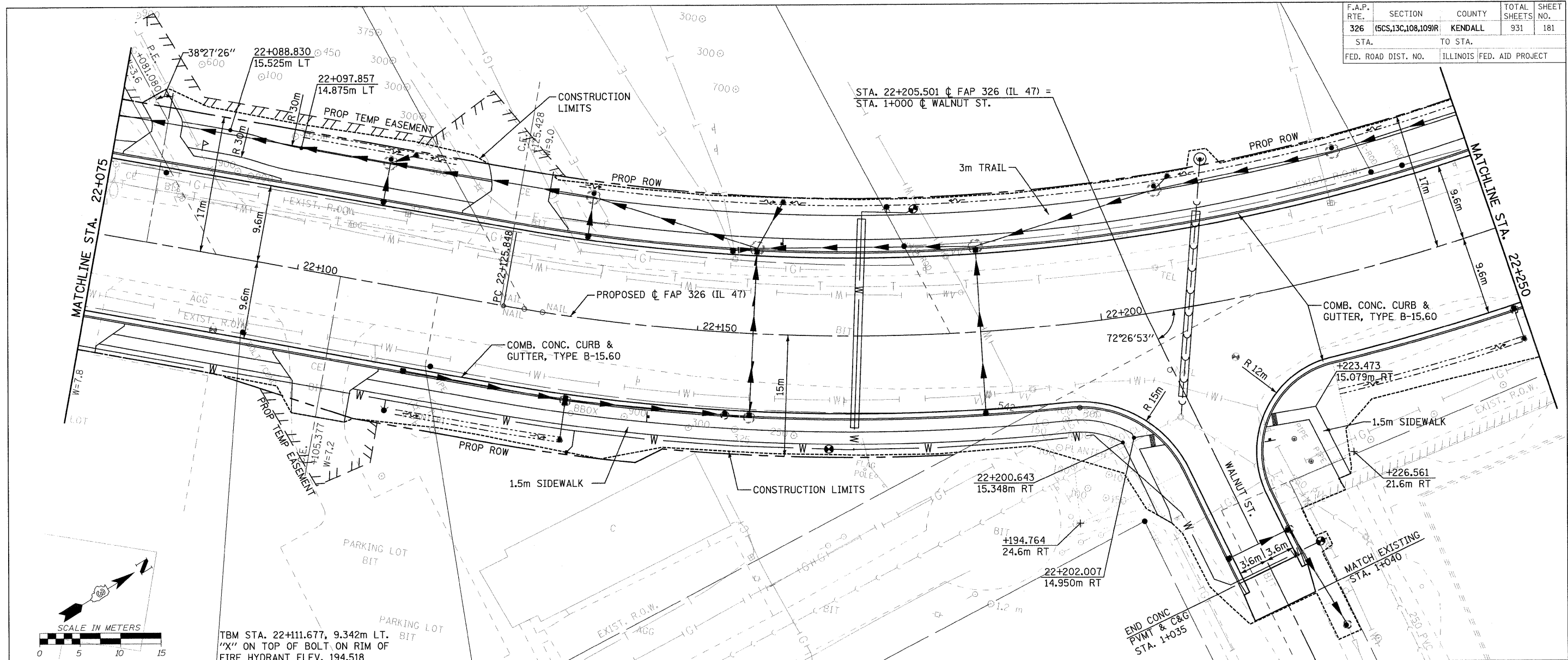


F.A.P. RTE.	SECTION	COUNTY	TOTAL SHEETS	SHEET NO.
326	(5CS,13C,108,109)R	KENDALL	931	181
STA.		TO STA.		
FED. ROAD DIST. NO.		ILLINOIS FED. AID PROJECT		



FILE: 161pp47_25.dgn
 PLOTTED: 8/13/2011
 Sheet: 25
 Angle: 58.1405
 Color: P.11.47

HMG JOB NO. 5122