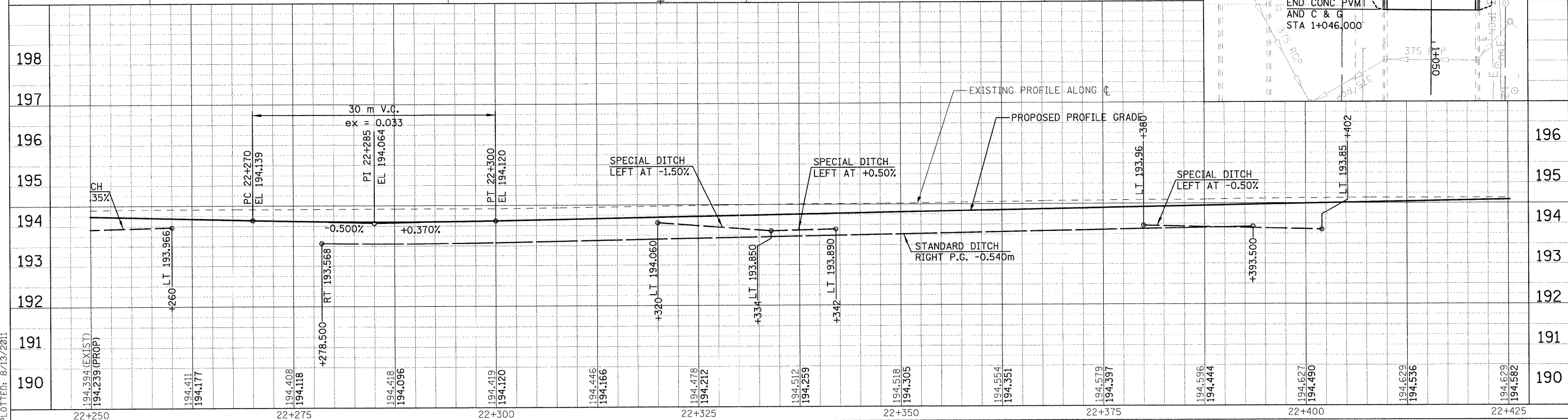
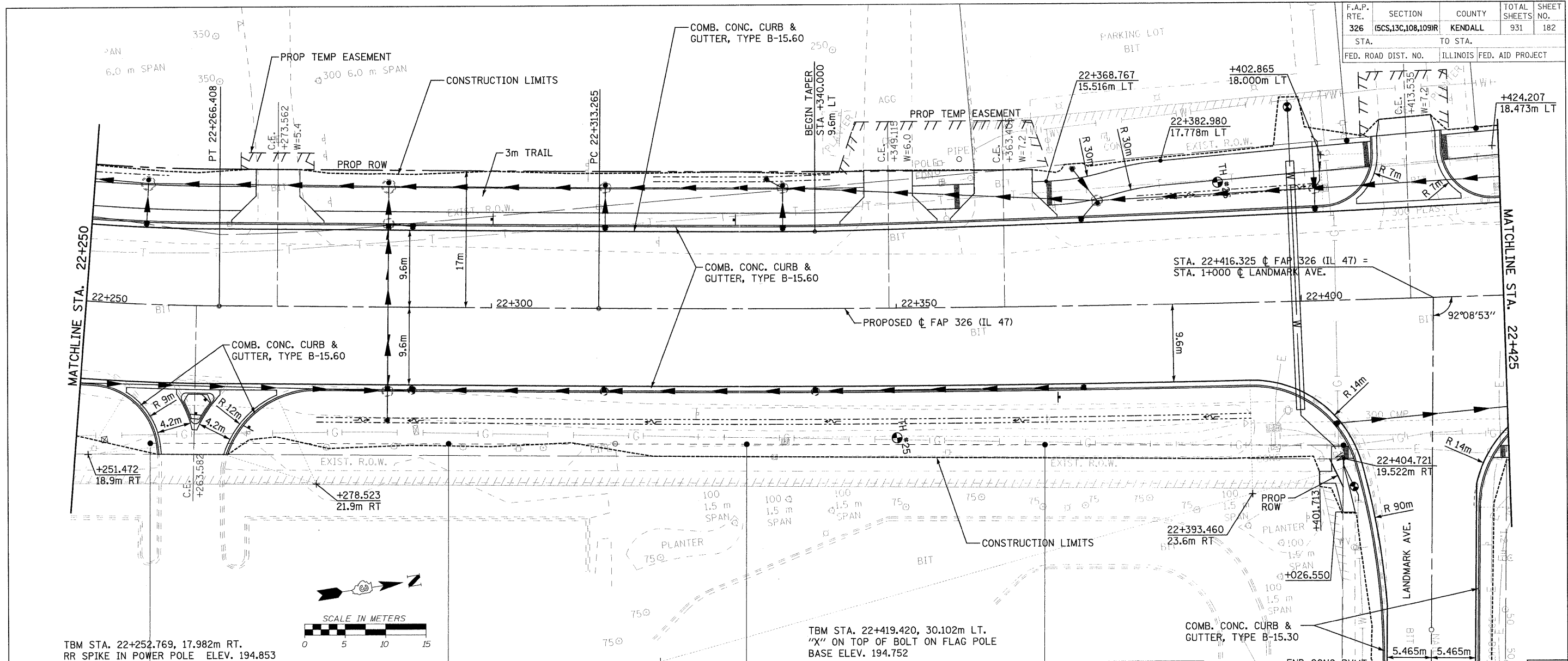


F.A.P. RTE.	SECTION	COUNTY	TOTAL SHEETS NO.	SHEET NO.
326	(6S,13C,108,109)R	KENDALL	931	182
STA.	TO STA.			
FED. ROAD DIST. NO.	ILLINOIS		FED. AID PROJECT	



FILE: 182pp47-26.dgn  
PLOTTED: 8/13/2011

Sheet: 26  
Angle: 81.2490  
Cntrl: P-11.47

HMG JOB NO. 5122