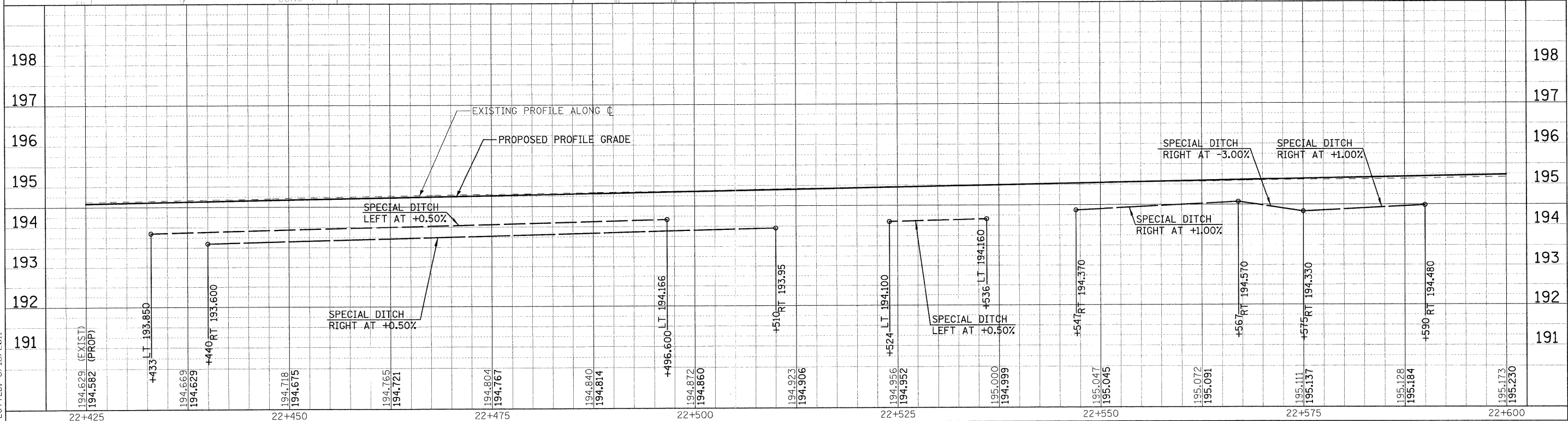
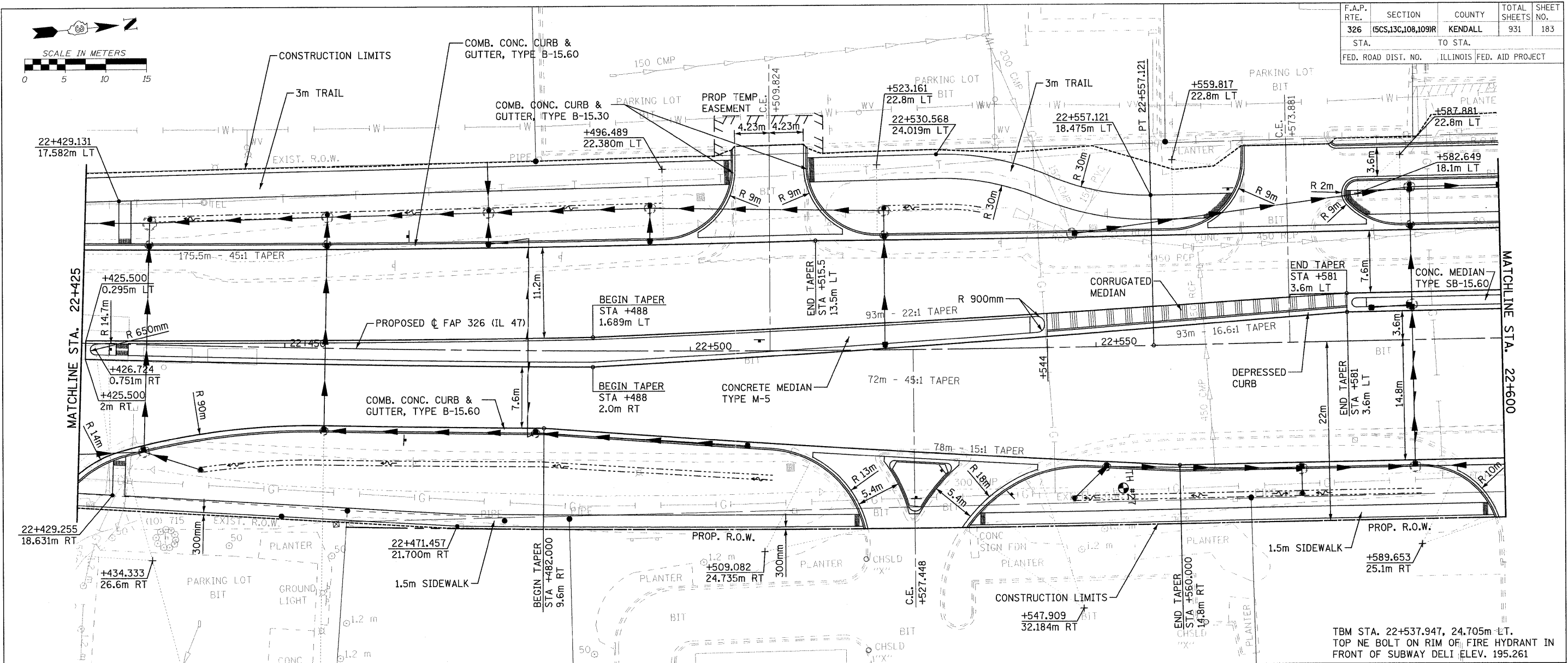
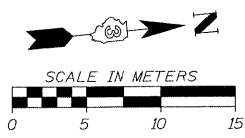


F.A.P. RTE.	SECTION	COUNTY	TOTAL SHEETS NO.	SHEET NO.
326	(SCS,13C,108,109R)	KENDALL	931	183
STA.	TO STA.			
FED. ROAD DIST. NO.	ILLINOIS	FED. AID PROJECT		



FILE: 183pe47-27.dgn
 PLOTTED: 8/13/2011
 Sheet: 27
 Angle: 84.75E7
 Chain: P.11.47

HMG JOB NO. 5122