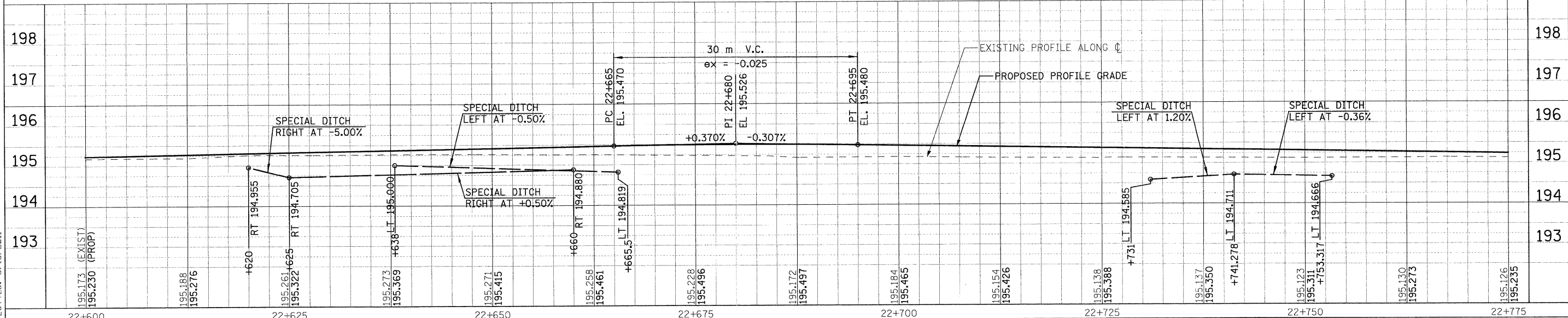
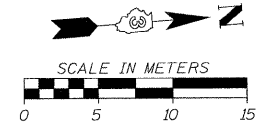
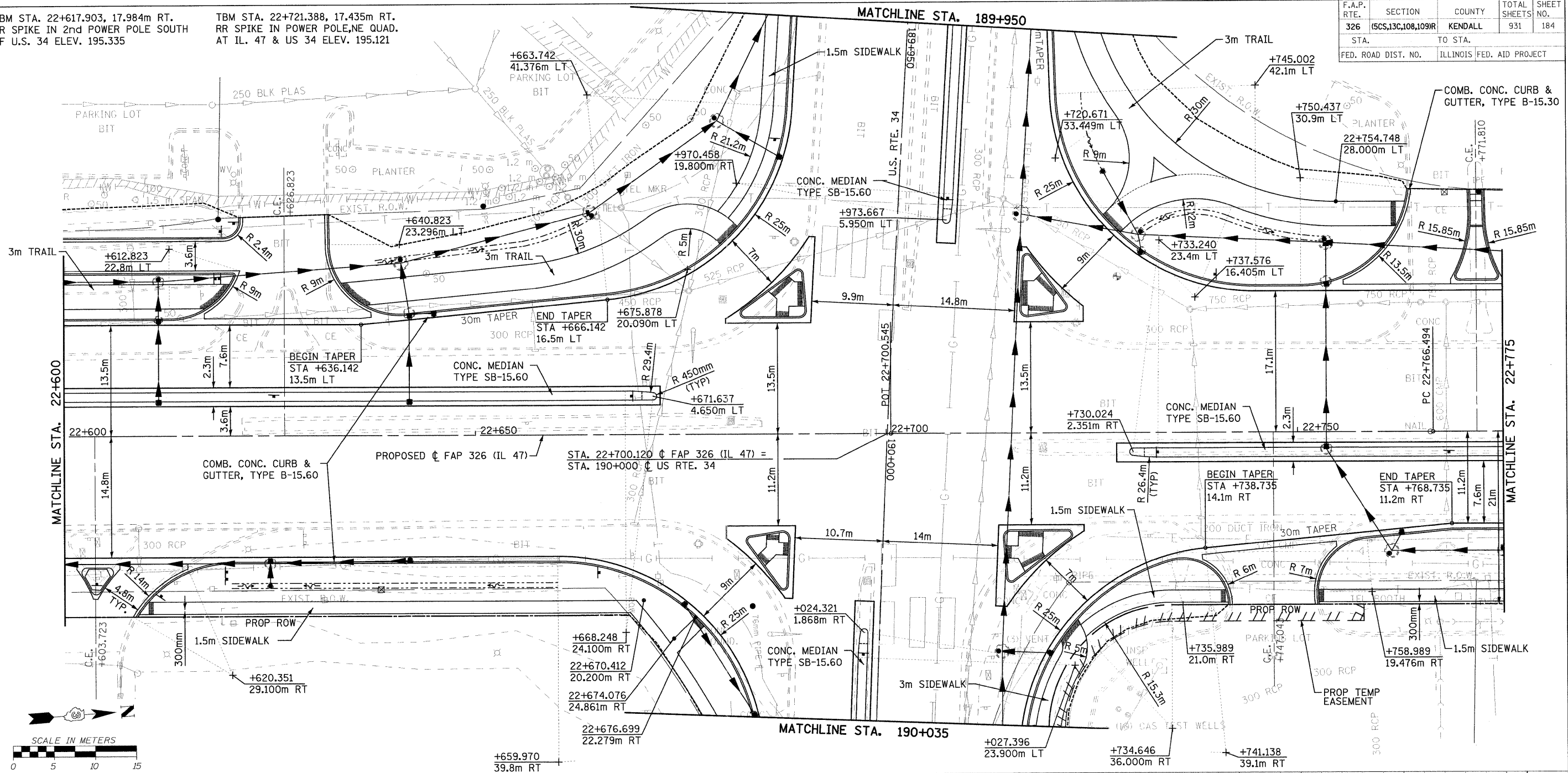


F.A.P. RTE.	SECTION	COUNTY	TOTAL SHEETS	SHEET NO.
326	(5CS,13C,108,109)R	KENDALL	931	184
STA.	TO STA.			
FED. ROAD DIST. NO.	ILLINOIS FED. AID PROJECT			

TBM STA. 22+617.903, 17.984m RT.  
RR SPIKE IN 2nd POWER POLE SOUTH  
OF U.S. 34 ELEV. 195.335

TBM STA. 22+721.388, 17.435m RT.  
RR SPIKE IN POWER POLE, NE QUAD.  
AT IL. 47 & US 34 ELEV. 195.121



FILE: 184pp47\_28.dgn  
PLOTTED: 8/13/2011