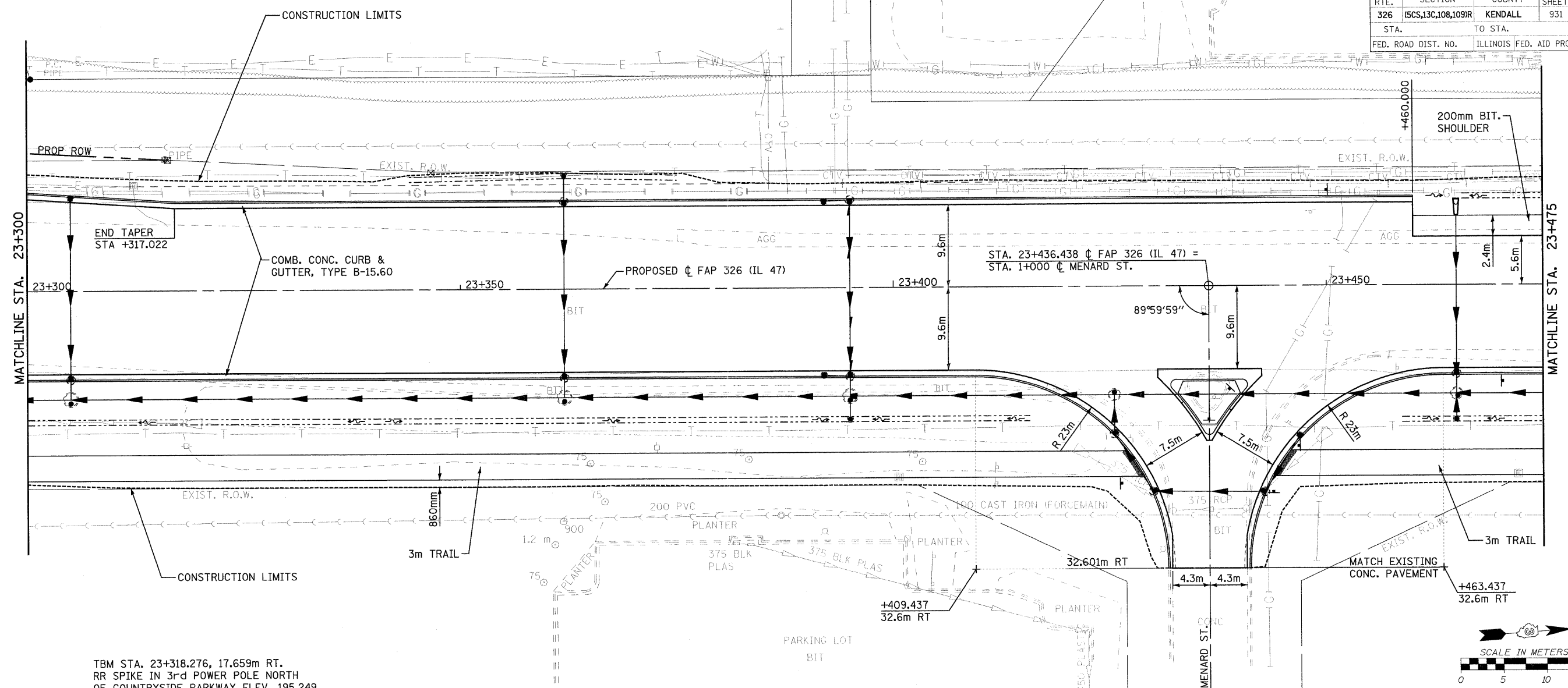
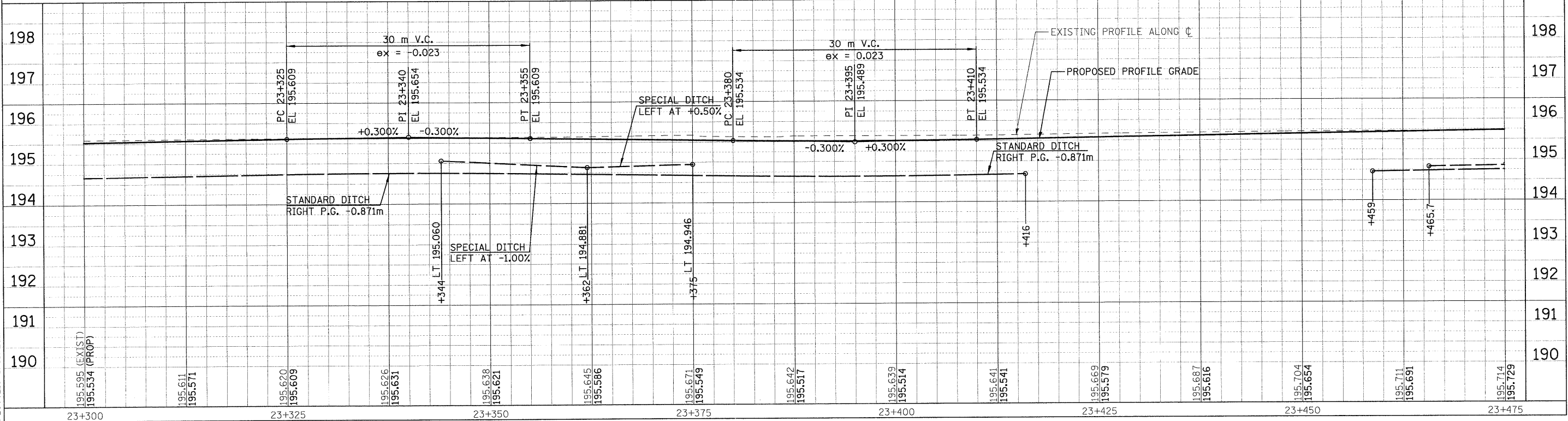


F.A.P. RTE.	SECTION	COUNTY	TOTAL SHEETS	SHEET NO.
326	(5CS,13C,108,109R)	KENDALL	931	188
STA. TO STA.		ILLINOIS FED. AID PROJECT		
FED. ROAD DIST. NO.				



TBM STA. 23+318.276, 17.659m RT.  
RR SPIKE IN 3rd POWER POLE NORTH  
OF COUNTRYSIDE PARKWAY ELEV. 195.249



FILE: 188pp47\_32.dgn  
PLOTTED: 8/13/2011

Sheet: 32  
Angle: 85.8135  
Chain: 5.1147

HMG JOB NO. 5122