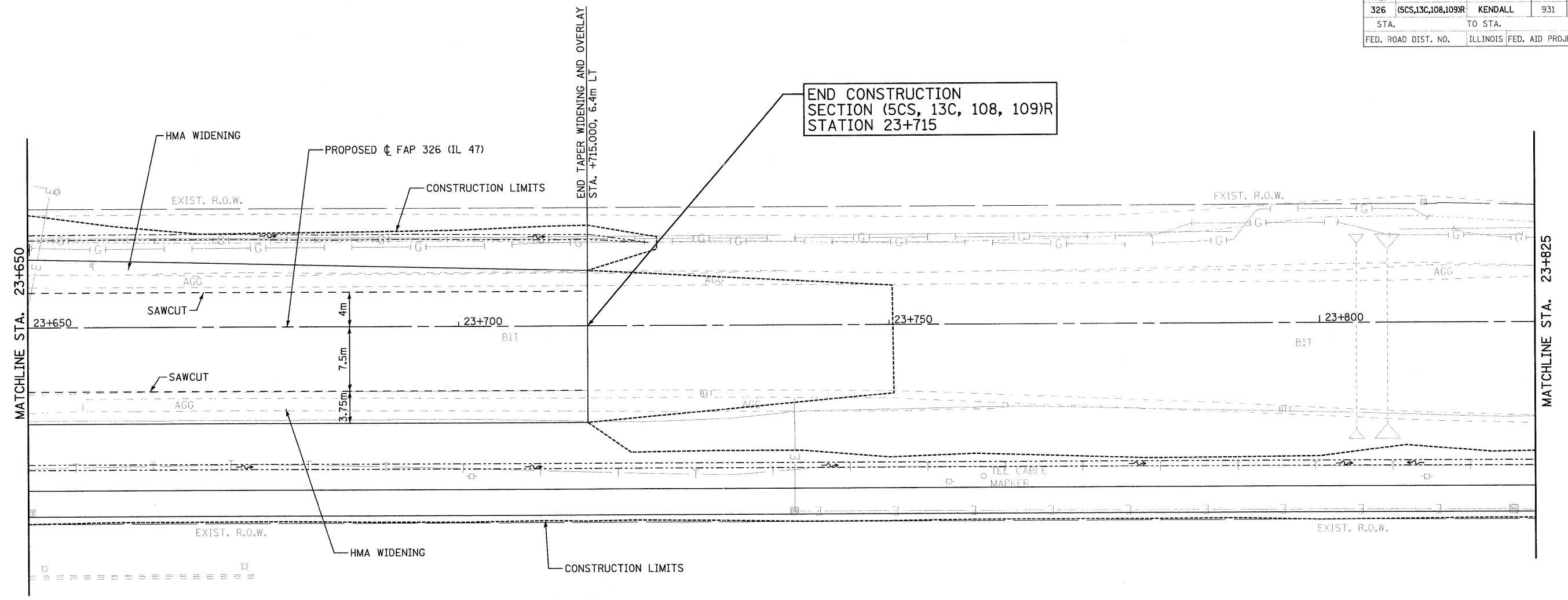
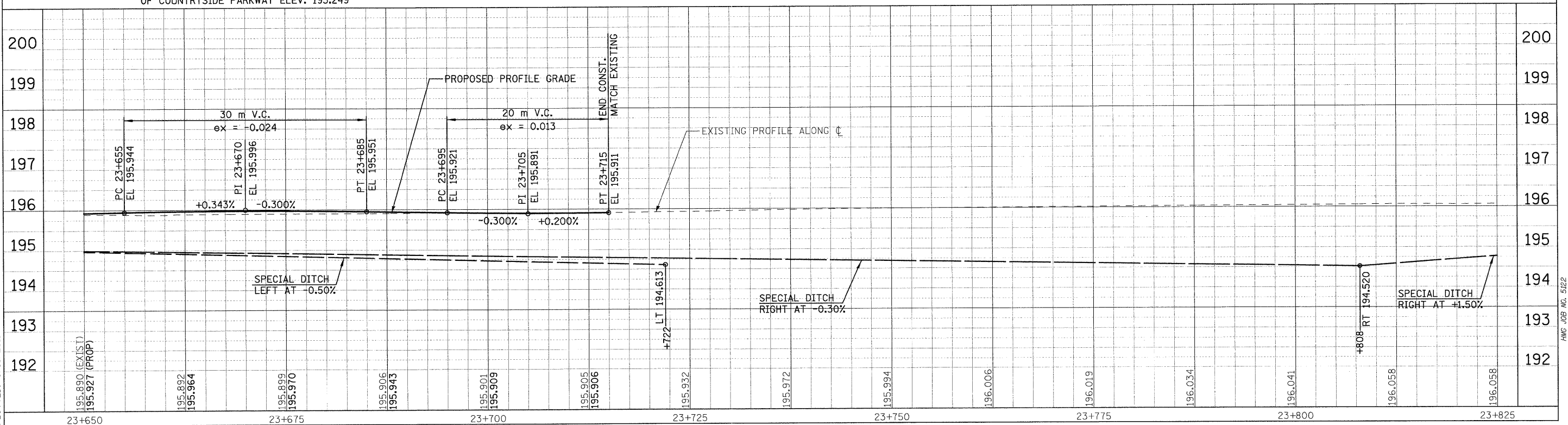
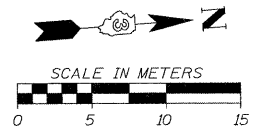


F.A.P. RTE.	SECTION	COUNTY	TOTAL SHEETS	SHEET NO.
326	(5CS,13C,108,109)R	KENDALL	931	190
STA.	TO STA.			
FED. ROAD DIST. NO.	ILLINOIS FED. AID PROJECT			



TBM STA. 23+318.276, 17.659m RT.
RR SPIKE IN 3rd POWER POLE NORTH
OF COUNTRYSIDE PARKWAY ELEV. 195.249



FILE: 190pp47_34.dgn
PLOTTED: 8/13/2011

Sheet: 32
Angle: 85.8535
Drawn: P.LL47

HMC JOB NO. 5122