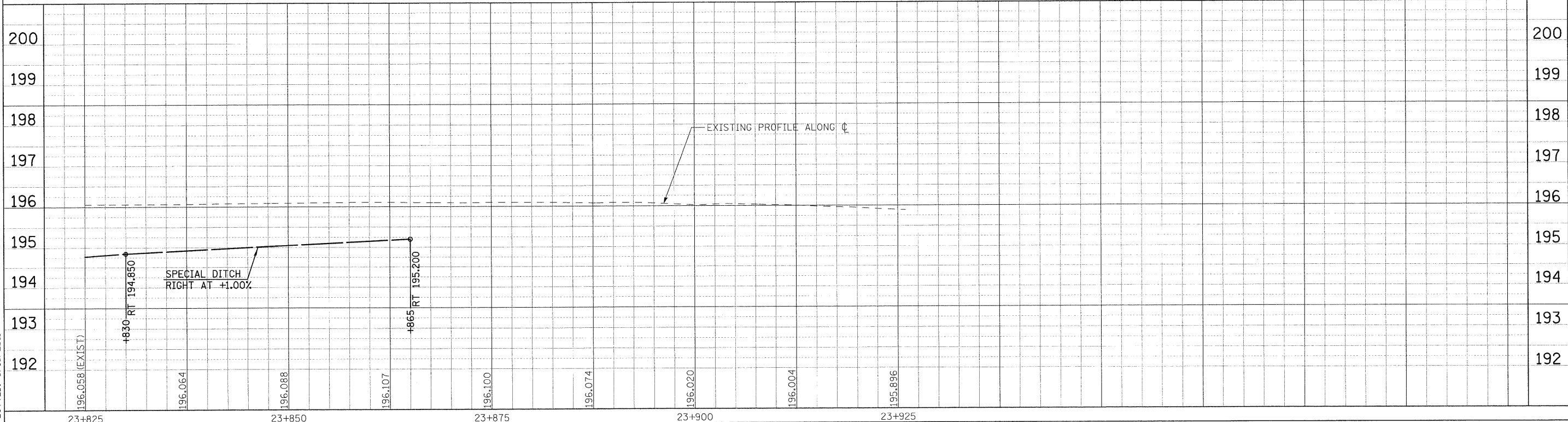
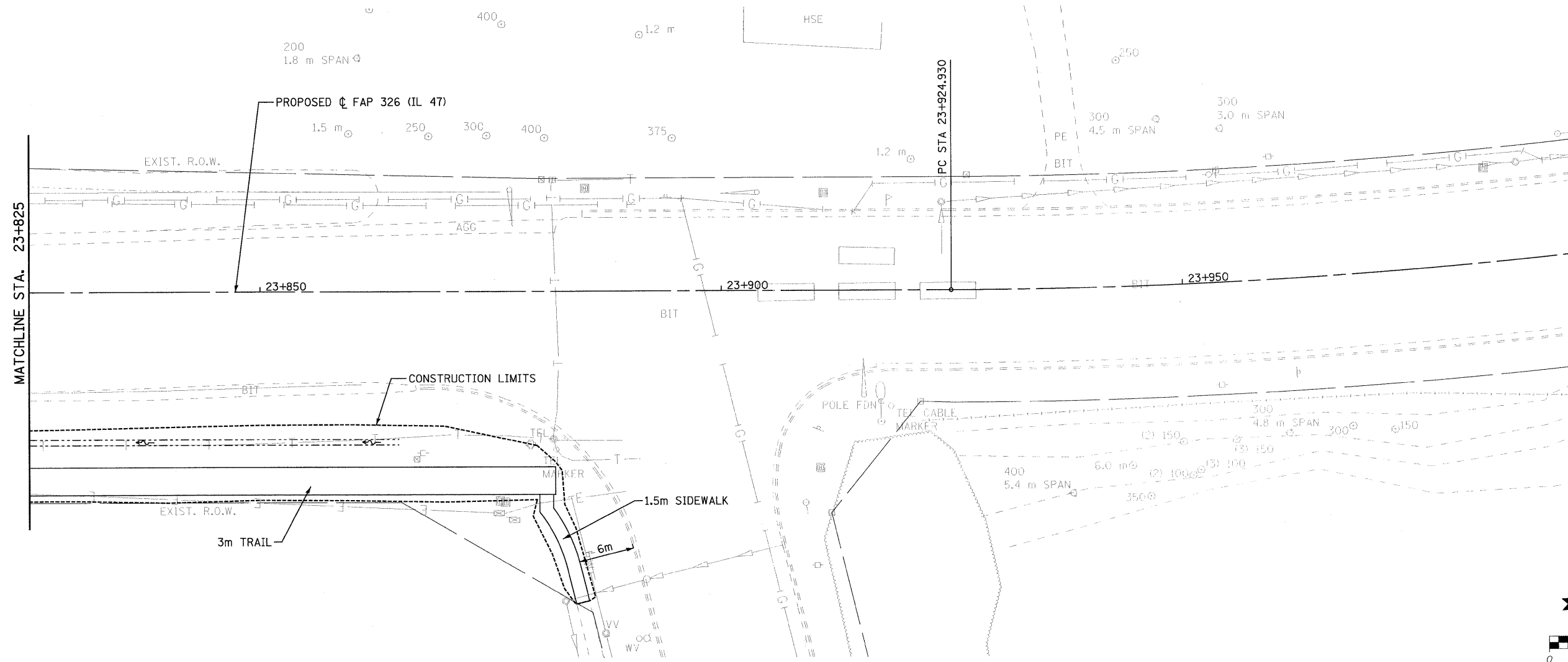


F.A.P. RTE.	SECTION	COUNTY	TOTAL SHEETS	SHEET NO.
326	(5CS,13C,108,109)R	KENDALL	931	191
STA.	TO STA.			
FED. ROAD DIST. NO.	ILLINOIS FED. AID PROJECT			

168



FILE: 191ppc47\_95.dgn  
PLOTTED: 8/13/2011

Sheet: 32  
Angle: 85.4535  
Date: 8/13/11

HMG JOB NO. 5122