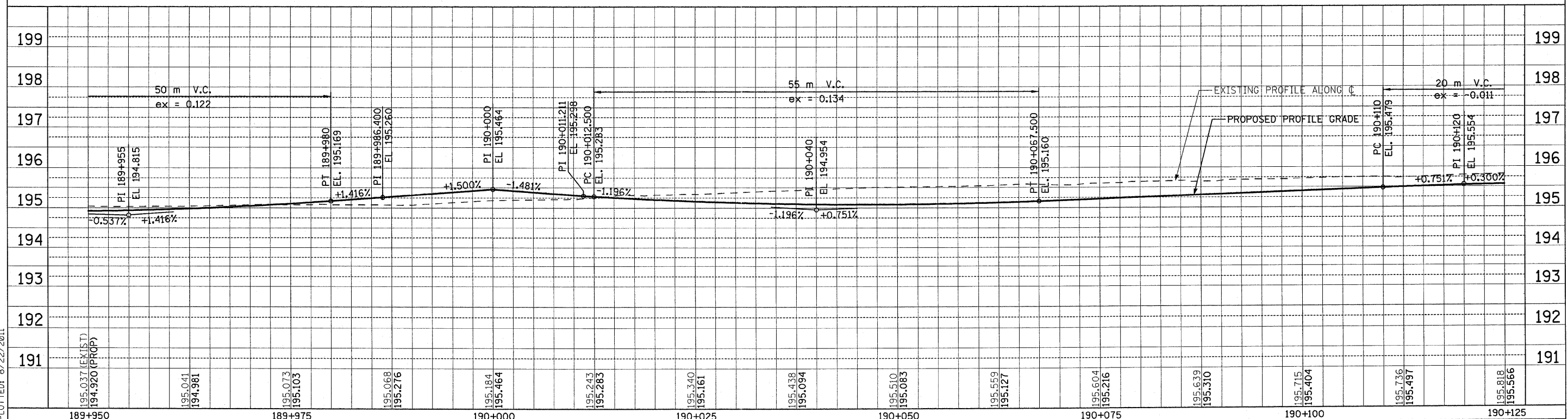
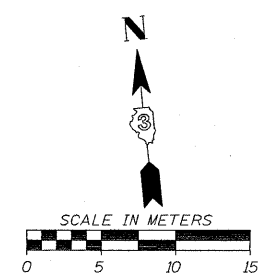
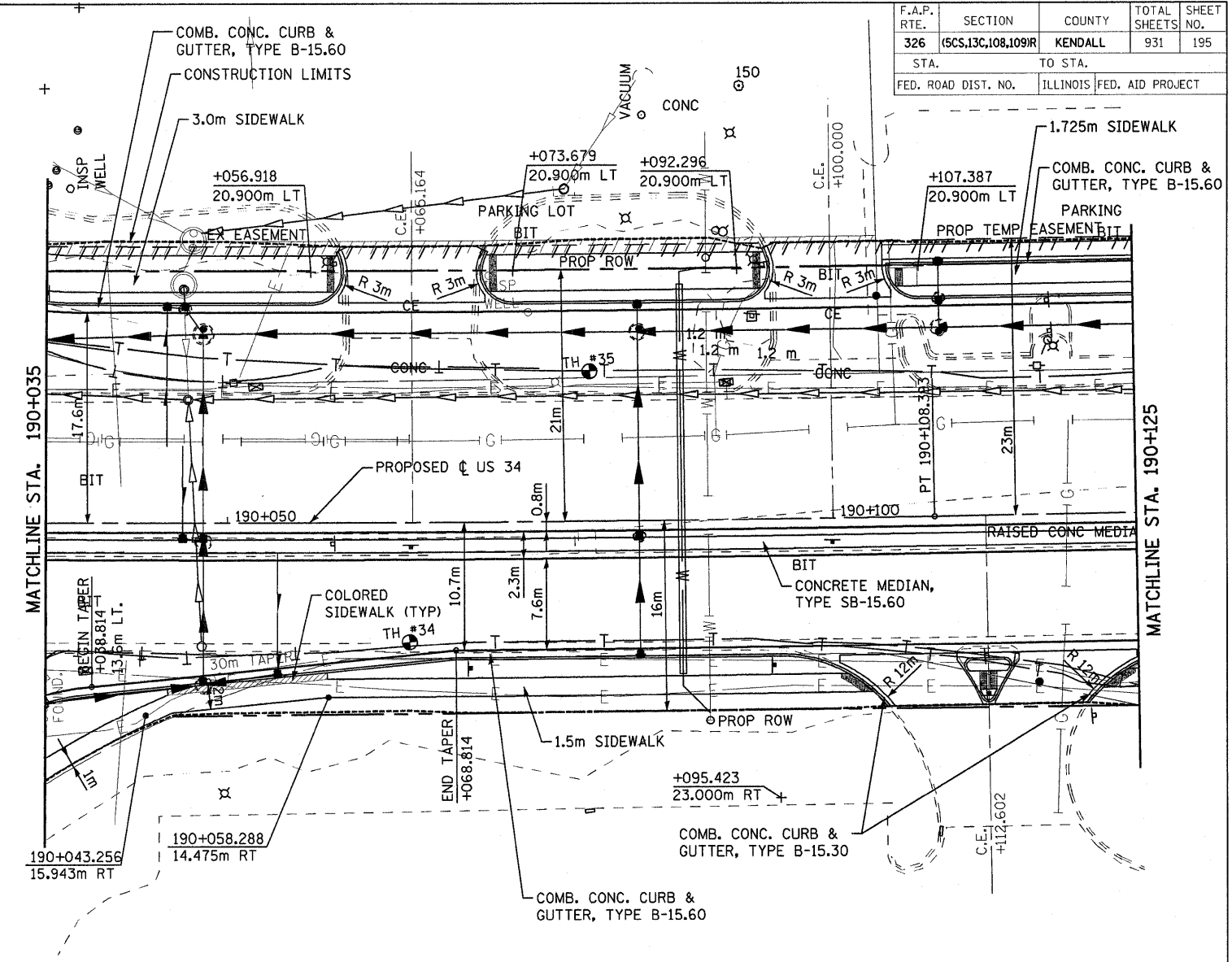


F.A.P. RTE.	SECTION	COUNTY	TOTAL SHEETS	SHEET NO.
326	(5CS,13C,108,109)R	KENDALL	931	195
STA. TO STA.				
FED. ROAD DIST. NO.		ILLINOIS FED. AID PROJECT		

CURVE DATA
 PI STA = 189+982.965
 $\Delta = 4^\circ 06' 59''$ (LT)
 R = 3,493.039m
 T = 125.536m
 L = 250.963m
 E = 2.255m
 e = -----
 T.R. = -----m
 S.E. RUN. = -----m
 P.C. STA = 189+857.430
 P.T. STA = 190+108.393



FILE: 195ppUS34_3.dgn
 PLOTTED: 8/22/2011

HMG JOB NO. 5122