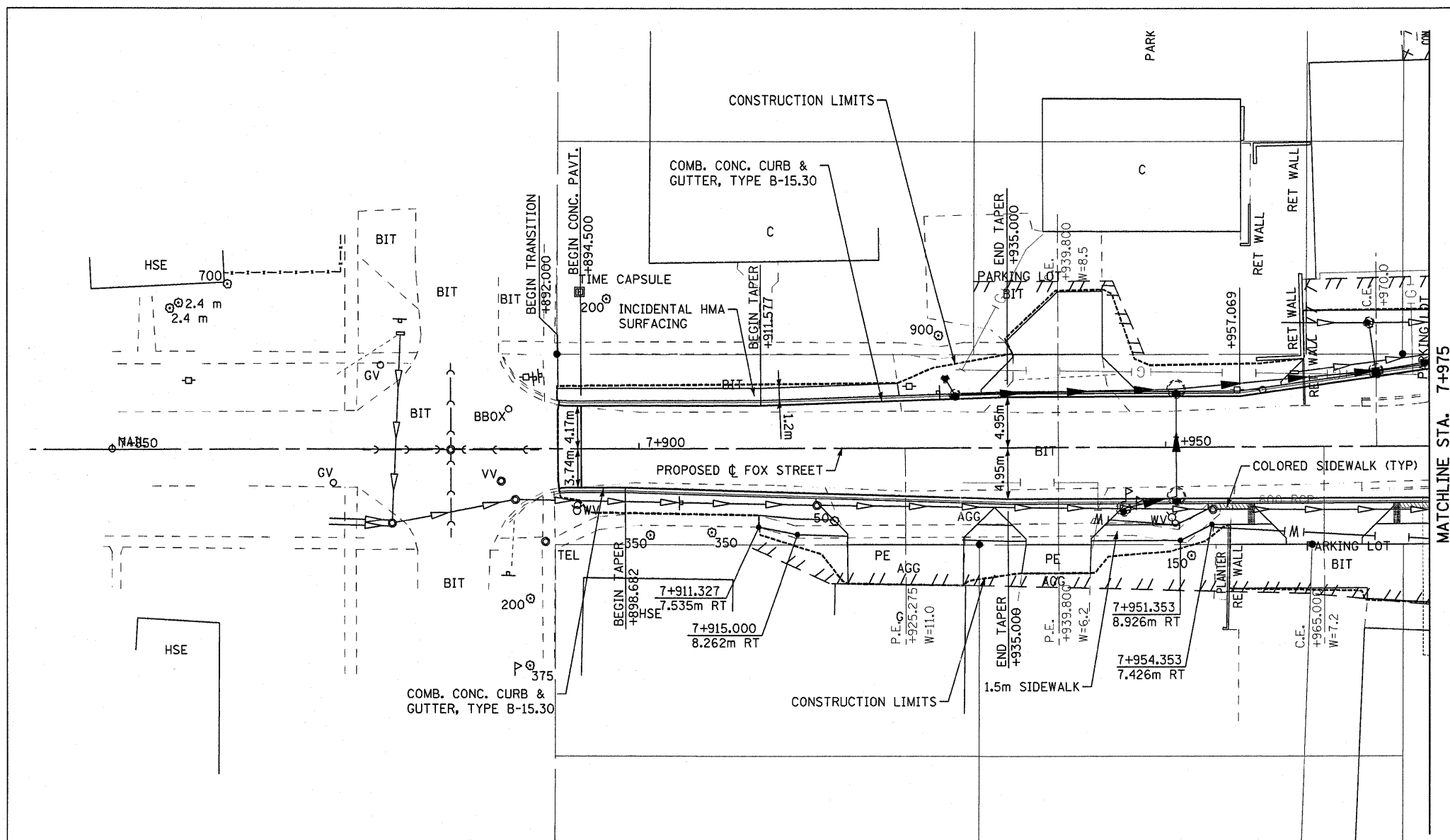
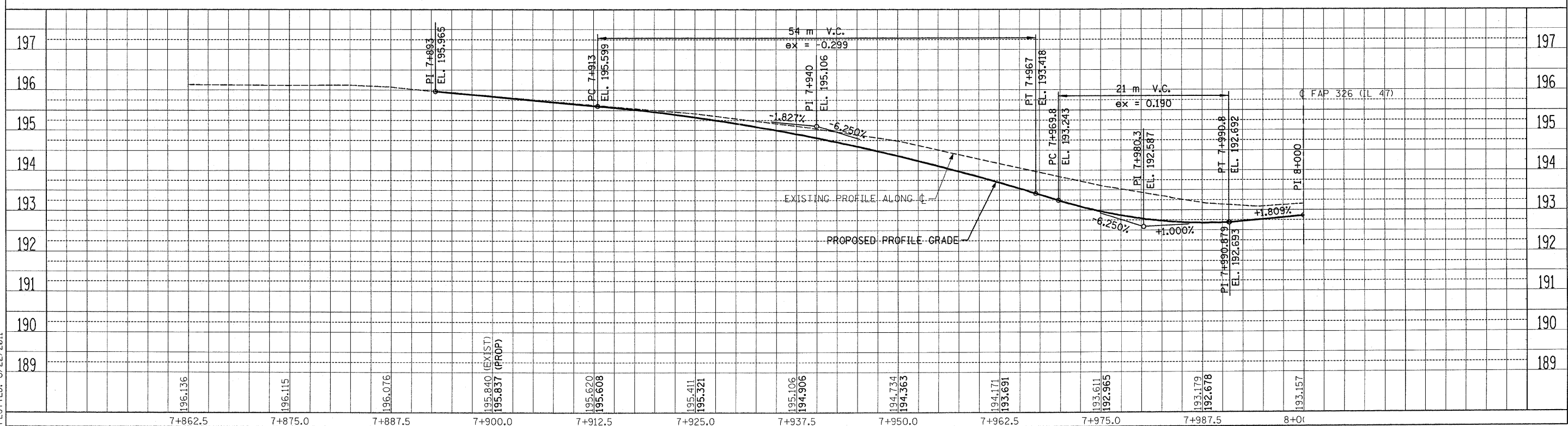
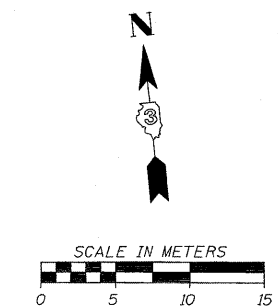


F.A.P. RTE.	SECTION	COUNTY	TOTAL SHEETS	SHEET NO.
326	(SCS,13C,108,109)R	KENDALL	931	198
STA.		TO STA.		
FED. ROAD DIST. NO.		ILLINOIS FED. AID PROJECT		



MATCHLINE STA. 7+975



FILE: 198ppFoxSt_1.dgn
PLOTTED: 8/22/2011

HMG JOB NO. 5122