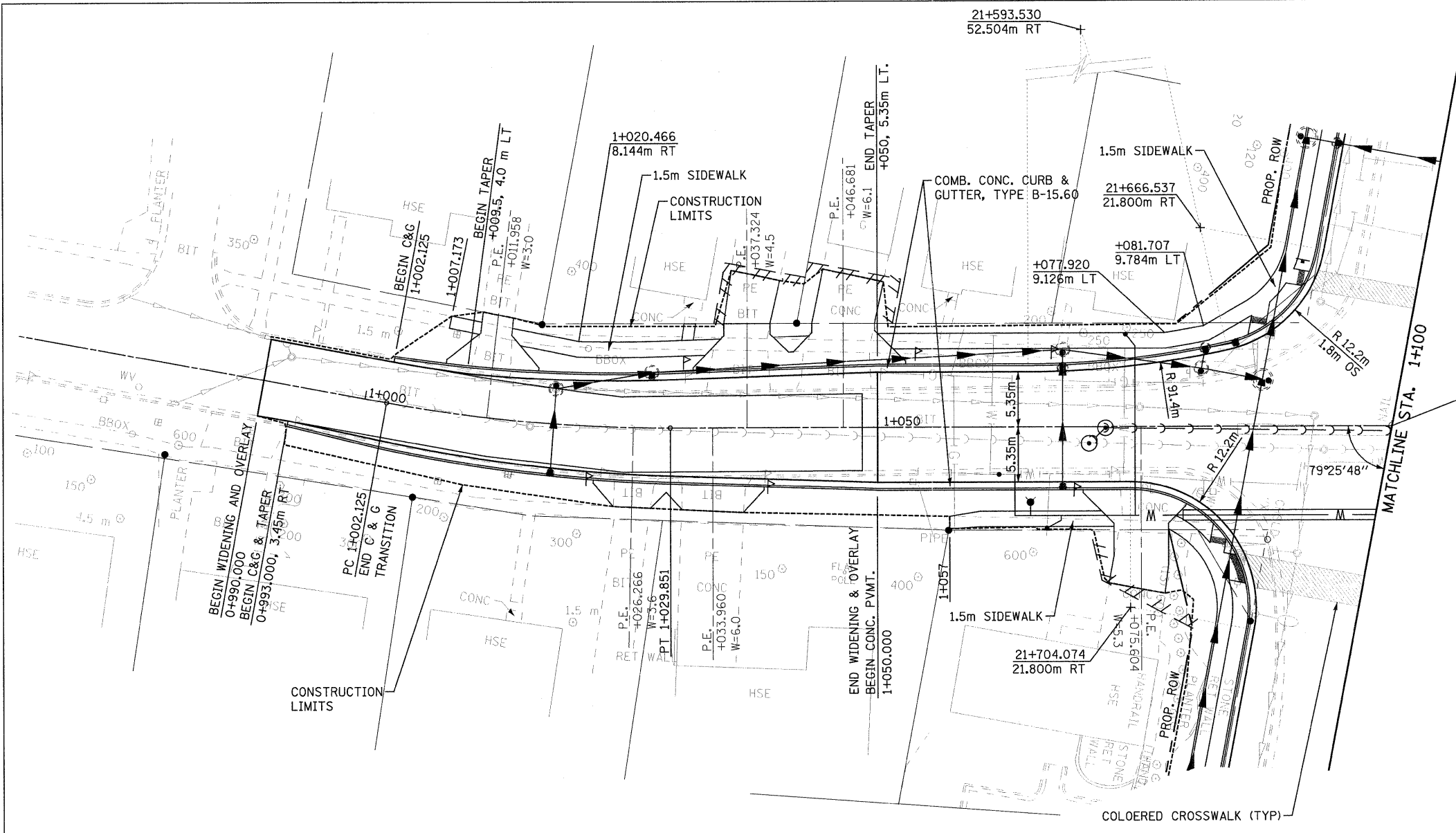
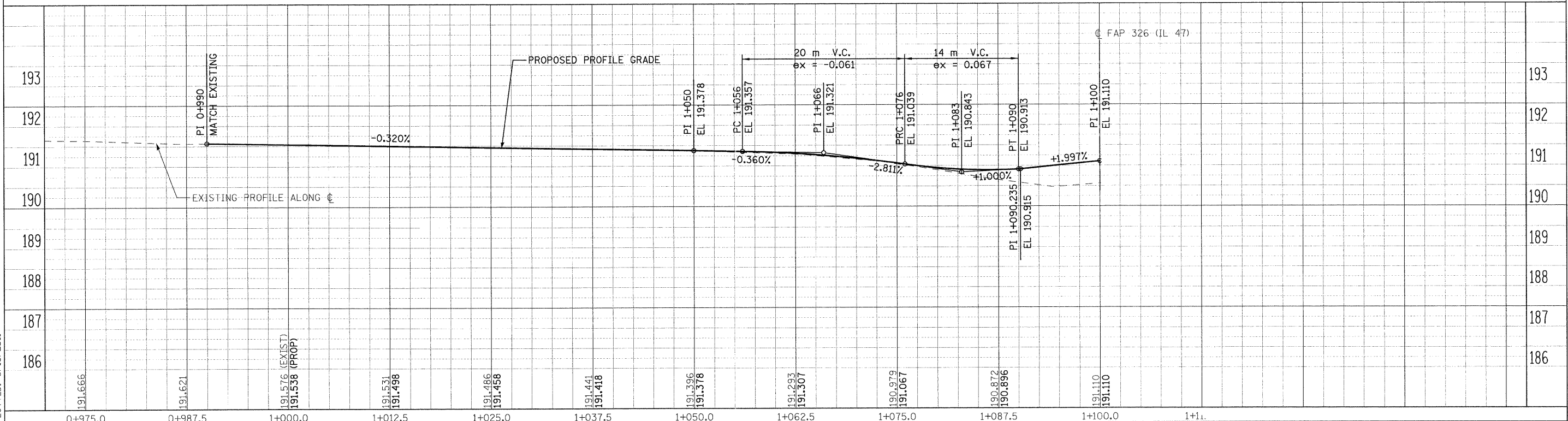
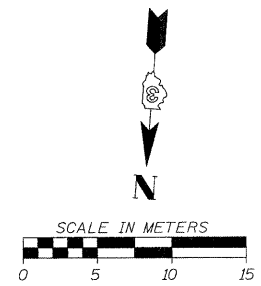


F.A.P. RTE.	SECTION	COUNTY	TOTAL SHEETS	SHEET NO.
326	(5CS,13C,10B,109)R	KENDALL	931	205
STA.		TO STA.		
FED. ROAD DIST. NO.		ILLINOIS FED. AID PROJECT		



STA. 21+682.153 @ FAP 326 (IL 47) =
STA. 1+100.000 @ SOMONAUK ST.



FILE: 205_ppSomo1.dgn
PLOTTED: 8/13/2011

HMG JOB NO. 5122