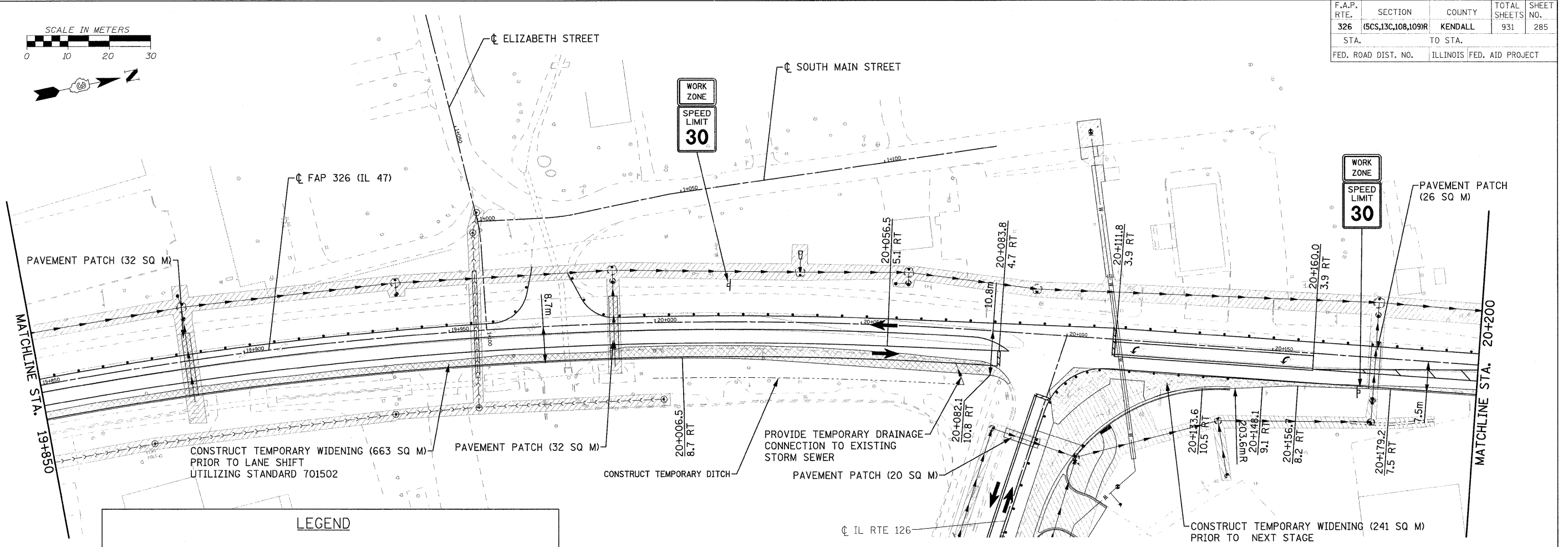
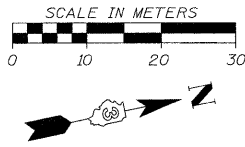
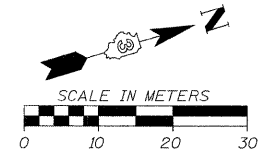
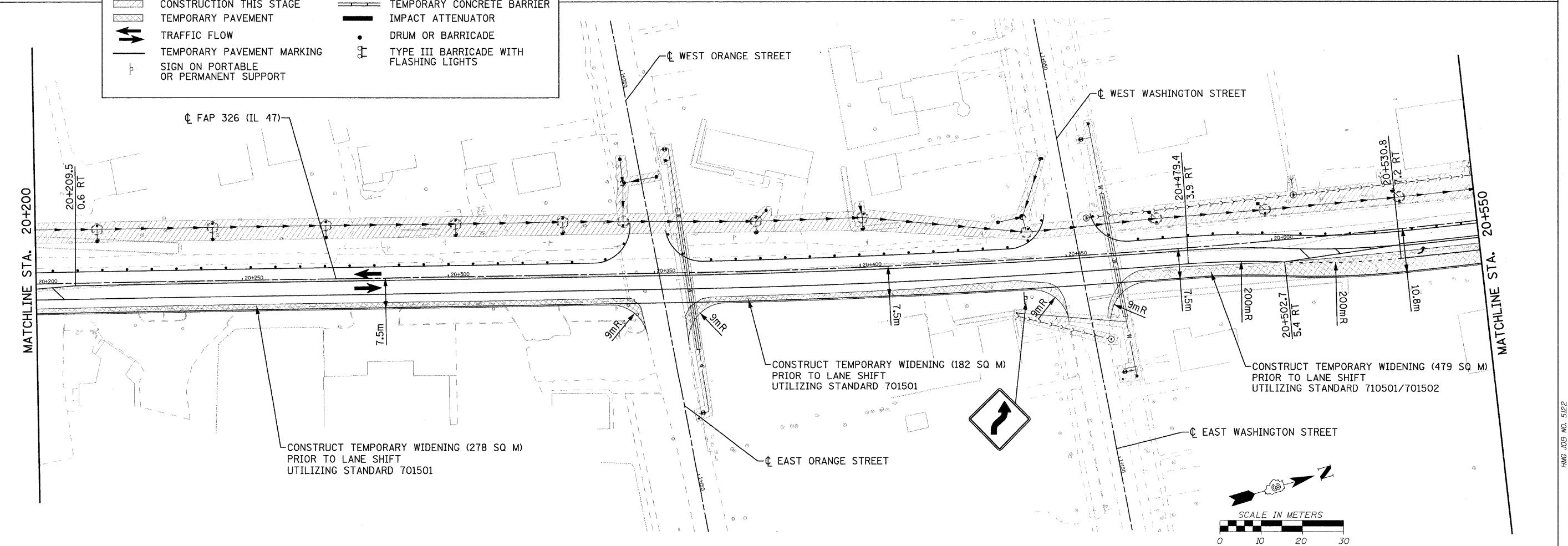


F.A.P. RTE.	SECTION	COUNTY	TOTAL SHEETS	SHEET NO.
326	(5CS,13C,108,109)R	KENDALL	931	285
STA.		TO STA.		
FED. ROAD DIST. NO.		ILLINOIS FED. AID PROJECT		



LEGEND

	CONSTRUCTION THIS STAGE		TEMPORARY CONCRETE BARRIER
	TEMPORARY PAVEMENT		IMPACT ATTENUATOR
	TRAFFIC FLOW		DRUM OR BARRICADE
	TEMPORARY PAVEMENT MARKING		TYPE III BARRICADE WITH FLASHING LIGHTS
	SIGN ON PORTABLE OR PERMANENT SUPPORT		



FILE: 285STAGE.1_47_04.dgn
PLOTTED: 8/11/2011

HMG JOB NO. 5122