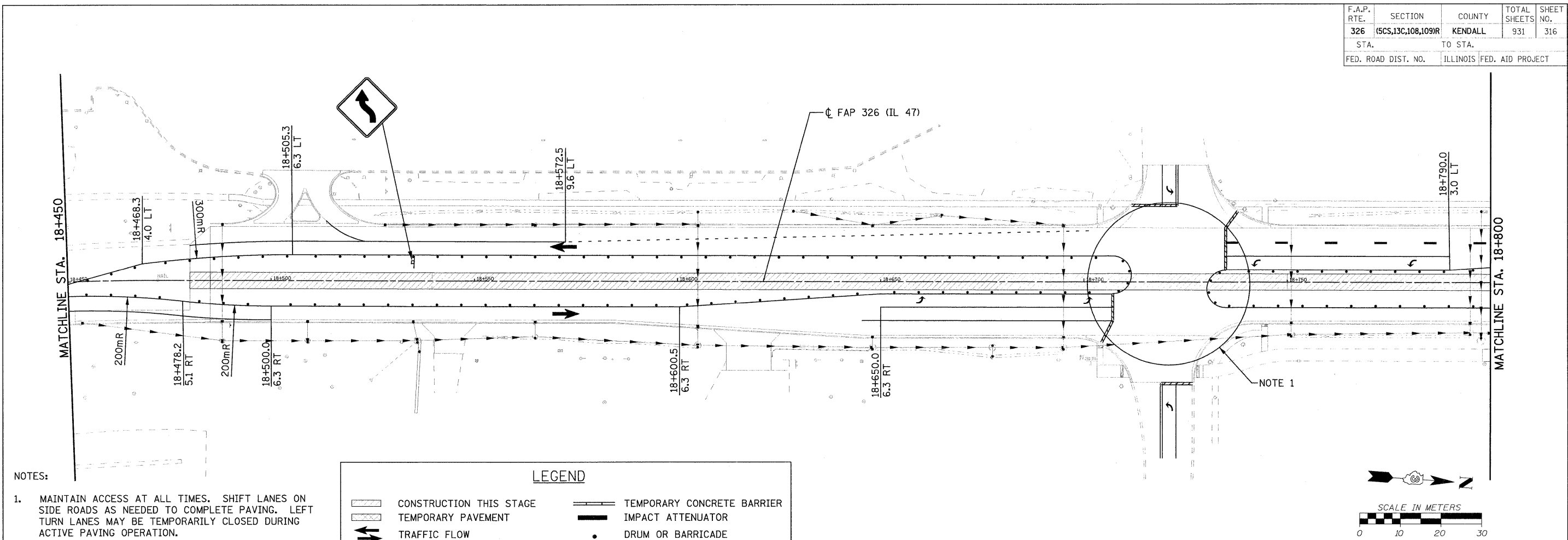


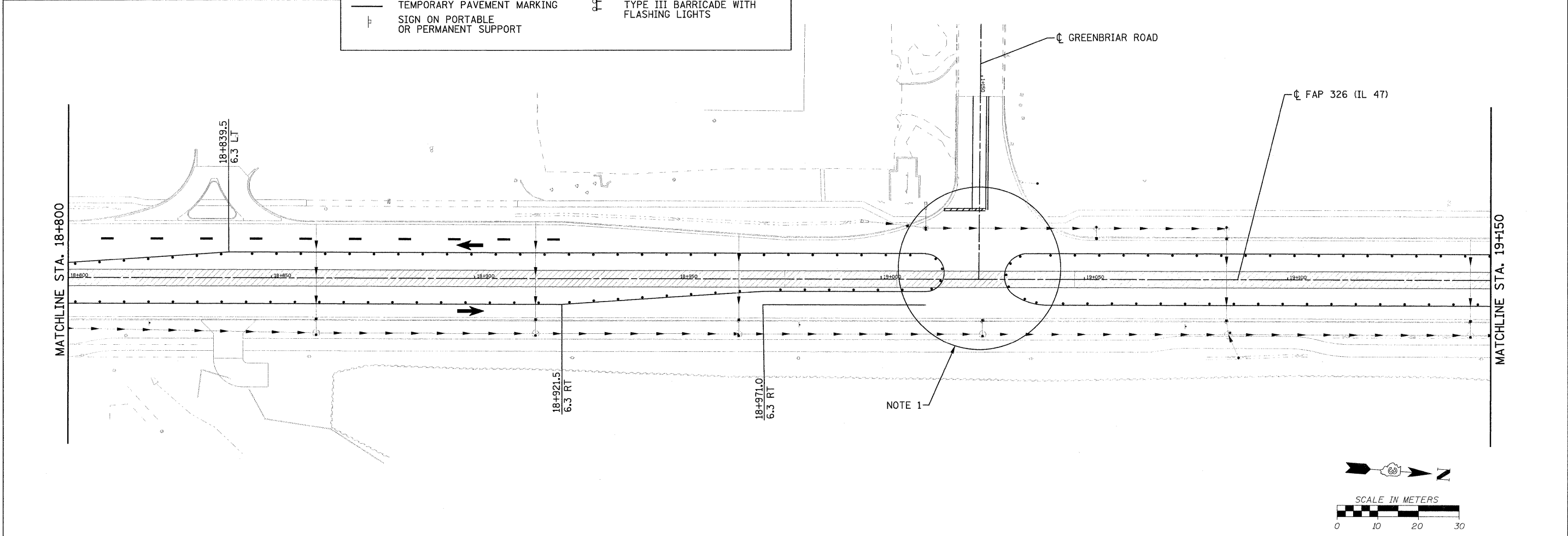
F.A.P. RTE.	SECTION	COUNTY	TOTAL SHEETS	SHEET NO.
326	(5CS,13C,108,109)R	KENDALL	931	316
STA.		TO STA.		
FED. ROAD DIST. NO.		ILLINOIS FED. AID PROJECT		



NOTES:
 1. MAINTAIN ACCESS AT ALL TIMES. SHIFT LANES ON SIDE ROADS AS NEEDED TO COMPLETE PAVING. LEFT TURN LANES MAY BE TEMPORARILY CLOSED DURING ACTIVE PAVING OPERATION.

LEGEND

	CONSTRUCTION THIS STAGE		TEMPORARY CONCRETE BARRIER
	TEMPORARY PAVEMENT		IMPACT ATTENUATOR
	TRAFFIC FLOW		DRUM OR BARRICADE
	TEMPORARY PAVEMENT MARKING		TYPE III BARRICADE WITH FLASHING LIGHTS
	SIGN ON PORTABLE OR PERMANENT SUPPORT		



FILE: 316STAGE_3_47_02.dgn
 PLOTTED: 8/11/2011

HMG JOB NO. 5122