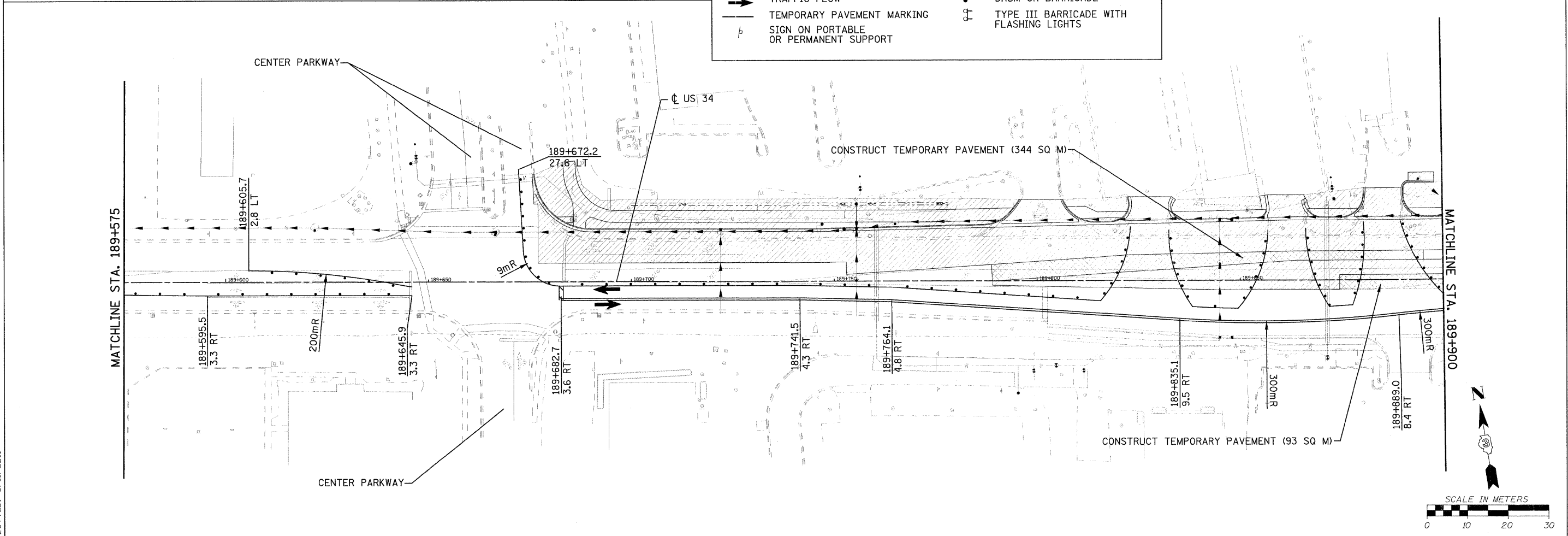
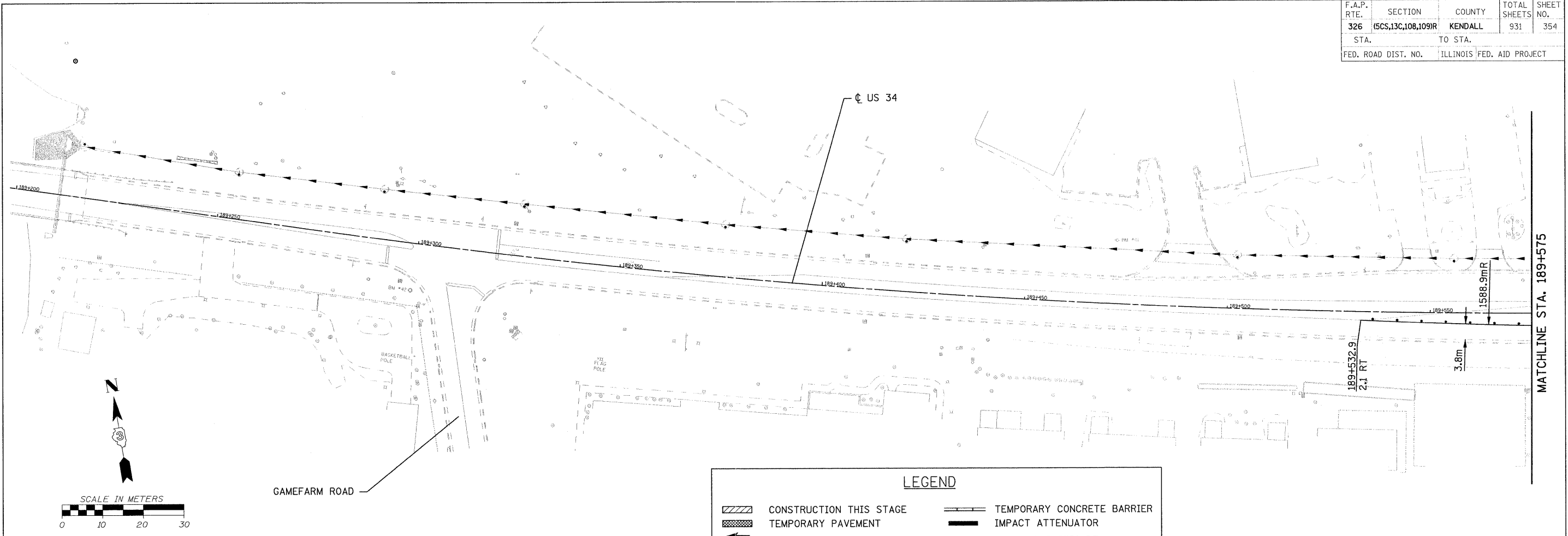


F.A.P. RTE.	SECTION	COUNTY	TOTAL SHEETS	SHEET NO.
326	(6CS,13C,108,109R)	KENDALL	931	354
STA.		TO STA.		
FED. ROAD DIST. NO.		ILLINOIS		FED. AID PROJECT



FILE: 354STAGE_6_34_01.dgn
PLOTTED: 8/11/2011