

F.A.P. RTE.	SECTION	COUNTY	TOTAL SHEETS	SHEET NO.
326	(5CS,13C,108,109)R	KENDALL	931	393
STA.		TO STA.		
FED. ROAD DIST. NO.		ILLINOIS FED. AID PROJECT		



The Subsurface Utility Engineering Company
449 Munroe Falls Road
Tallmadge, OH 44278
(330) 794-4455

So-Deep Test Hole Certification Form - Metric

City, County, State: **CITY OF YORKVILLE, IL**
Gen. Loc: **W SIDE S.R. 47, 435M± N OF SR. 71**
Recorded Size/Material/Type: **UNK. SIZE & TYPE (AT&T) TELE. LINE**
Foreman/Truck#/Form By: **J. CLINE / 219 / R. MOONEY**

So-Deep Corporate Office
8397 Euclid Avenue
Manassas Park, VA 20111
(703)361-6005

Control # **SILC078**
Test Hole # **7**
Plan Scale **1:250**
Sheet # **34**
Proposed Date **GRADE CHANGE JULY 8, 2009**

B.M. 1 Elev. = **213.548M** Description: **CHIS "X" SET TOP RIM SMH, 24M± LT OF CL STA 18+910±, S.R. 47**
is **GIVEN**
B.M. 2 Elev. = **212.941M** Description: **CHIS "X" SET TOP RIM SMH, 24M± LT OF CL STA 18+948±, S.R. 47**
is **GIVEN**

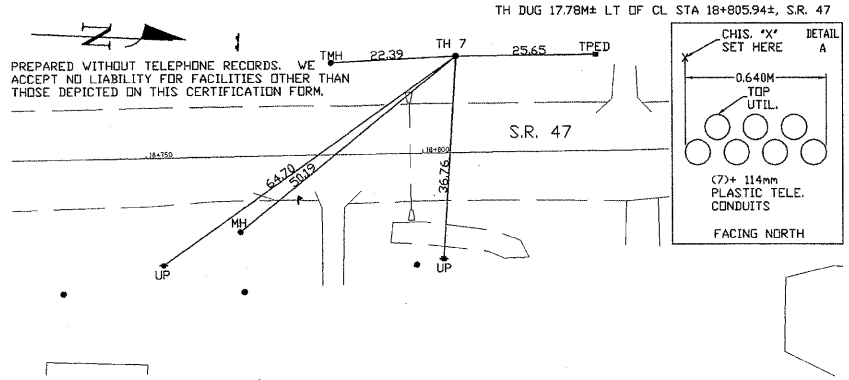
SO-DEEP will attempt to use the BMH most applicable to your design. If however, BMs differ by more than 0.015 m, resulting differences could cause design conflicts.

Benchmarks check **BY 0.006M**
Elevations are referenced to **B.M.#2**

Recorded Size/Type of utility **WAS FOUND**

There **WERE NOT** additional utilities in the test hole
The utility **WAS** in good condition.
Paving Thickness and type **NO PAVING**
Color of ribbon installed **ORANGE**
Soil Type **MOIST BROWN**
Field Condition **IN GRASS R/W**
T.H. tied to **CHIS "X" ****
(7) 114MM PLASTIC TELE. CONDUITS *
Size/Material/Type
Portion of pipe exposed for O.D. measurement:
FULL

Remarks: * CREW WAS UNABLE TO OBTAIN A BOTTOM ELEVATION OF THE TELE. FACILITIES DUE TO COPIOUS AMOUNT OF WATER. ADDITIONAL CONDUITS MAY BE PRESENT BUT LIE HIDDEN FROM VIEW. ** TEST HOLE DUG IN GRASS R/W, CHIS "X" SET IN CONC. SIDEWALK.



- R/W = Rights of Way
- N.T.S. = Not to Scale
- PC = Precast Concrete
- COND. = Conduit
- CONC. = Concrete
- O.D. = Outside Diameter
- C.I. = Cast Iron
- D.I. = Ductile Iron
- RPC = Rough Four Concrete
- CL = Centerline
- T.C. = Terra Cotta
- PLAS. = Plastic
- BL = Base Line
- ELEC. = Electric
- TELE. = Telephone
- T.H. = Test Hole
- SW = Sidewalk
- DW = Driveway
- BM = Benchmark
- C.B. = Catch Basin
- GV = Gas Valve
- Sewer Manhole
- Test Hole
- Fire Hydrant
- Pole
- Electric Manhole
- T.S. = Traverse Station
- Valve
- Water Meter
- Telephone Manhole
- Telephone Pedestal

Performing out-of-sight work...with vision™
All values are shown in meters (m) or millimeters (mm). To convert to feet multiply meters by 3.2808. Note: To eliminate mistakes and check this work, So-Deep suggests you scale and plot all dimensions onto the plans and review all elevations carefully. So-Deep is responsible only for information shown on our forms.



The Subsurface Utility Engineering Company
449 Munroe Falls Road
Tallmadge, OH 44278
(330) 794-4455

So-Deep Test Hole Certification Form - Metric

City, County, State: **CITY OF YORKVILLE, IL**
Gen. Loc: **SW CORNER S.R. 47 AND GREENBRIAR ROAD**
Recorded Size/Material/Type: **UNK. SIZE & TYPE (AT&T) TELE. LINE**
Foreman/Truck#/Form By: **J. CLINE / 219 / R. MOONEY**

So-Deep Corporate Office
8397 Euclid Avenue
Manassas Park, VA 20111
(703)361-6005

Control # **SILC078**
Test Hole # **9**
Plan Scale **1:250**
Sheet # **5**
Proposed Date **GRADE CHANGE JULY 9, 2009**

B.M. 1 Elev. = **211.900M** Description: **(TRAV. 15) IRON PIN FOUND, 20M± LT OF CL STA 19+041±, S.R. 47**
is **GIVEN**
B.M. 2 Elev. = **210.567M** Description: **CHIS "X" SET TOP RIM SMH, 24M± LT OF CL STA 19+062±, S.R. 47**
is **GIVEN**

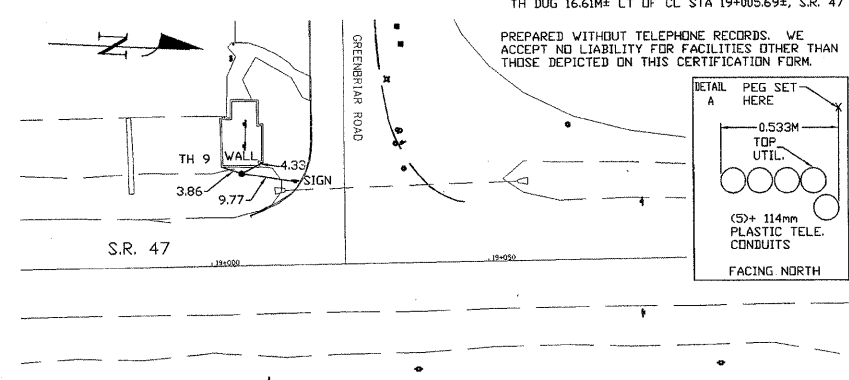
SO-DEEP will attempt to use the BMH most applicable to your design. If however, BMs differ by more than 0.015 m, resulting differences could cause design conflicts.

Benchmarks check **BY 0.008M**
Elevations are referenced to **B.M.#2**

Recorded Size/Type of utility **WAS FOUND**

There **WERE NOT** additional utilities in the test hole
The utility **WAS** in good condition.
Paving Thickness and type **NO PAVING**
Color of ribbon installed **ORANGE**
Soil Type **MOIST BROWN**
Field Condition **IN GRASS R/W**
T.H. tied to **PEG**
(5) 114MM PLASTIC TELE. CONDUITS *
Size/Material/Type
Portion of pipe exposed for O.D. measurement:
FULL

Remarks: * CREW WAS UNABLE TO OBTAIN A BOTTOM ELEVATION OF THE TELE. FACILITIES DUE TO COPIOUS AMOUNT OF WATER. ADDITIONAL CONDUITS MAY BE PRESENT BUT LIE HIDDEN FROM VIEW.



- R/W = Rights of Way
- N.T.S. = Not to Scale
- PC = Precast Concrete
- COND. = Conduit
- CONC. = Concrete
- O.D. = Outside Diameter
- C.I. = Cast Iron
- D.I. = Ductile Iron
- RPC = Rough Four Concrete
- CL = Centerline
- T.C. = Terra Cotta
- PLAS. = Plastic
- BL = Base Line
- ELEC. = Electric
- TELE. = Telephone
- T.H. = Test Hole
- SW = Sidewalk
- DW = Driveway
- BM = Benchmark
- C.B. = Catch Basin
- GV = Gas Valve
- Sewer Manhole
- Test Hole
- Fire Hydrant
- Pole
- Electric Manhole
- T.S. = Traverse Station
- Valve
- Water Meter
- Telephone Manhole
- Telephone Pedestal

Performing out-of-sight work...with vision™
All values are shown in meters (m) or millimeters (mm). To convert to feet multiply meters by 3.2808. Note: To eliminate mistakes and check this work, So-Deep suggests you scale and plot all dimensions onto the plans and review all elevations carefully. So-Deep is responsible only for information shown on our forms.



The Subsurface Utility Engineering Company
449 Munroe Falls Road
Tallmadge, OH 44278
(330) 794-4455

So-Deep Test Hole Certification Form - Metric

City, County, State: **CITY OF YORKVILLE, IL**
Gen. Loc: **S.R. 47 JUST N OF GREENBRIAR ROAD**
Recorded Size/Material/Type: **UNK. SIZE & TYPE (AT&T) TELE. LINE**
Foreman/Truck#/Form By: **J. CLINE / 219 / R. MOONEY**

So-Deep Corporate Office
8397 Euclid Avenue
Manassas Park, VA 20111
(703)361-6005

Control # **SILC078**
Test Hole # **11**
Plan Scale **1:250**
Sheet # **5**
Proposed Date **GRADE CHANGE JULY 9, 2009**

B.M. 1 Elev. = **211.900M** Description: **(TRAV. 15) IRON PIN FOUND, 20M± LT OF CL STA 19+041±, S.R. 47**
is **GIVEN**
B.M. 2 Elev. = **210.567M** Description: **CHIS "X" SET TOP RIM SMH, 24M± LT OF CL STA 19+062±, S.R. 47**
is **GIVEN**

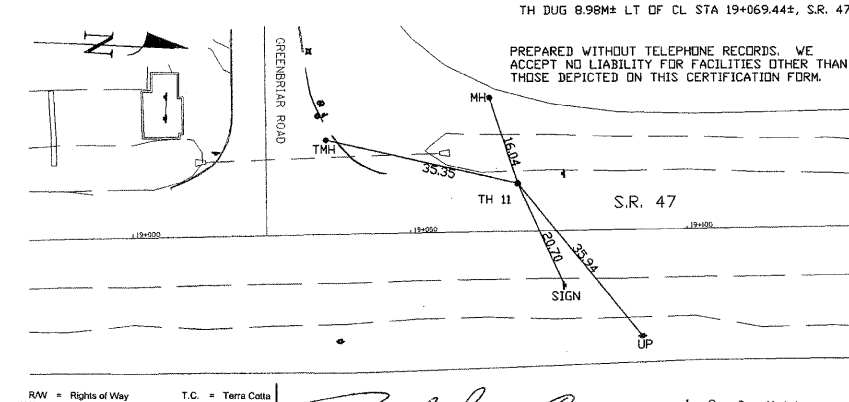
SO-DEEP will attempt to use the BMH most applicable to your design. If however, BMs differ by more than 0.015 m, resulting differences could cause design conflicts.

Benchmarks check **BY 0.012M**
Elevations are referenced to **B.M.#2**

Recorded Size/Type of utility **WAS FOUND**

There **WERE NOT** additional utilities in the test hole
The utility **WAS** in good condition.
Paving Thickness and type **254MM ASP.**
Color of ribbon installed **ORANGE**
Soil Type **MOIST BROWN**
Field Condition **ASP. RDWY.**
T.H. tied to **P.K. NAIL**
44MM TELE. CABLE
Size/Material/Type
Portion of pipe exposed for O.D. measurement:
FULL

Remarks: NONE



- R/W = Rights of Way
- N.T.S. = Not to Scale
- PC = Precast Concrete
- COND. = Conduit
- CONC. = Concrete
- O.D. = Outside Diameter
- C.I. = Cast Iron
- D.I. = Ductile Iron
- RPC = Rough Four Concrete
- CL = Centerline
- T.C. = Terra Cotta
- PLAS. = Plastic
- BL = Base Line
- ELEC. = Electric
- TELE. = Telephone
- T.H. = Test Hole
- SW = Sidewalk
- DW = Driveway
- BM = Benchmark
- C.B. = Catch Basin
- GV = Gas Valve
- Sewer Manhole
- Test Hole
- Fire Hydrant
- Pole
- Electric Manhole
- T.S. = Traverse Station
- Valve
- Water Meter
- Telephone Manhole
- Telephone Pedestal

Performing out-of-sight work...with vision™
All values are shown in meters (m) or millimeters (mm). To convert to feet multiply meters by 3.2808. Note: To eliminate mistakes and check this work, So-Deep suggests you scale and plot all dimensions onto the plans and review all elevations carefully. So-Deep is responsible only for information shown on our forms.

REVISIONS		ILLINOIS DEPARTMENT OF TRANSPORTATION
NAME	DATE	
		UTILITY TEST HOLE RECORD
DATE		DRAWN BY
		CHECKED BY