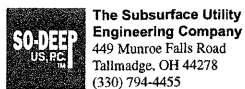


F.A.P. RTE.	SECTION	COUNTY	TOTAL SHEETS	SHEET NO.
326	(5CS,13C,108,109R)	KENDALL	931	401
STA.	TO STA.			
FED. ROAD DIST. NO.	ILLINOIS	FED. AID PROJECT		



**The Subsurface Utility Engineering Company**  
449 Munroe Falls Road  
Tallmadge, OH 44278  
(330) 794-4455

### So-Deep Test Hole Certification Form - Metric

© So-Deep 1988, 1994

So-Deep Corporate Office  
8397 Euclid Avenue  
Manassas Park, VA 20111  
(703)361-6005

Control # **SILC078**  
Test Hole # **35**  
Plan Scale **25**  
Sheet # **2**  
Proposed Date **GRADE CHANGE JULY 23, 2009**

Civ. County, State **CITY OF YORKVILLE, IL**  
Gen. Loc. **U.S. 34, 80M± E OF S.R. 47**  
Recorded Size/Material/Type **UNK. SIZE & TYPE (AT&T) TELE. LINE**  
Foreman/Truck#/Form By **J. CLINE / 219 / R. MOONEY**

B.M. 1 Elev. = **195.252M**  
is **GIVEN**  
Description: **CHIS "X" SET TOP RIM SMH, 10M± LT OF CL STA 190+047±, U.S. 34**

B.M. 2 Elev. = **195.248M**  
is **GIVEN**  
Description: **CHIS "X" SET TOP RIM CB, 10M± RT OF CL STA 190+048±, U.S. 34**

SO-DEEP will attempt to use the BM#1 most applicable to your design. If however, BMs differ by more than 0.015 m, resulting differences could cause design conflicts.

Benchmarks check **BY 0.009M**  
Elevations are referenced to **B.M.#1**

Recorded Size/Type of utility **WAS FOUND**

There **WERE NOT** additional utilities in the test hole

The utility **WAS** in good condition.

Paving Thickness and type **NO PAVING**

Color of ribbon installed **ORANGE**

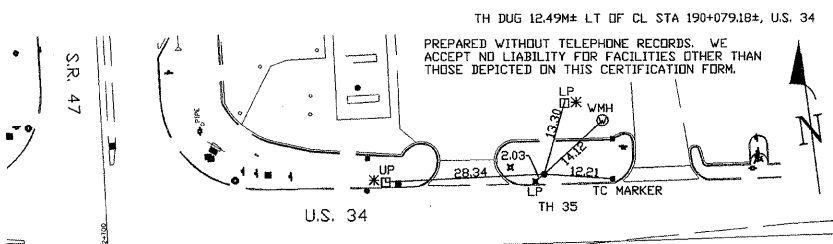
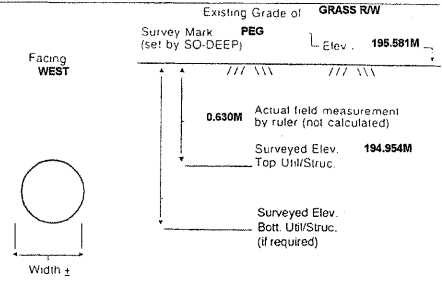
Soil Type **MOIST BROWN**

Field Condition **IN GRASS RW**

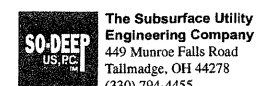
T.H. tied to **PEG**

**44MM TELE. CABLE**  
Size/Material/Type  
Portion of pipe exposed for O.D. measurement:  
**FULL**

Remarks: **NONE**



- RW = Rights of Way
- N.T.S. = Not to Scale
- PCC = Precast Concrete
- COND. = Conduit
- CONC. = Concrete
- O.D. = Outside Diameter
- C.I. = Cast Iron
- D.I. = Ductile Iron
- RPC = Rough Pour Concrete
- CL = Centerline
- T.C. = Terra Cotta
- PLAS. = Plastic
- BL. = Base Line
- ELEC. = Electric
- TELE. = Telephone
- T.H. = Test Hole
- SW = Sidewalk
- DW = Driveway
- BM = Benchmark
- C.B. = Catch Basin
- GV = Gas Valve
- Sewer Manhole
- Test Hole
- Fire Hydrant
- Pole
- Fence Line
- Electric Manhole
- T.S. = Traverse Station
- Valve
- Water Meter
- Telephone Manhole
- Telephone Pedestal



**The Subsurface Utility Engineering Company**  
449 Munroe Falls Road  
Tallmadge, OH 44278  
(330) 794-4455

### So-Deep Test Hole Certification Form - Metric

© So-Deep 1988, 1994

So-Deep Corporate Office  
8397 Euclid Avenue  
Manassas Park, VA 20111  
(703)361-6005

Control # **SILC078**  
Test Hole # **35**  
Plan Scale **1:250**  
Sheet # **2**  
Proposed Date **GRADE CHANGE JULY 21, 2009**

Civ. County, State **CITY OF YORKVILLE, IL**  
Gen. Loc. **SR 47 48M± N OF SARAVANOS DRIVE**  
Recorded Size/Material/Type **UNK. SIZE & TYPE (AT&T) TELE. LINE**  
Foreman/Truck#/Form By **J. CLINE / 219 / R. MOONEY**

B.M. 1 Elev. = **226.971M**  
is **GIVEN**  
Description: **CHIS "X" SET TOP RIM SMH, 20M± RT OF CL STA 18+222±, S.R. 47**

B.M. 2 Elev. = **228.242M**  
is **GIVEN**  
Description: **CHIS "X" SET TOP RIM SMH, 22M± RT OF CL STA 18+134±, S.R. 47**

SO-DEEP will attempt to use the BM#1 most applicable to your design. If however, BMs differ by more than 0.015 m, resulting differences could cause design conflicts.

Benchmarks check **BY 0.009M**  
Elevations are referenced to **B.M.#1**

Recorded Size/Type of utility **WAS FOUND**

There **WERE NOT** additional utilities in the test hole

The utility **WAS** in good condition.

Paving Thickness and type **NO PAVING**

Color of ribbon installed **ORANGE**

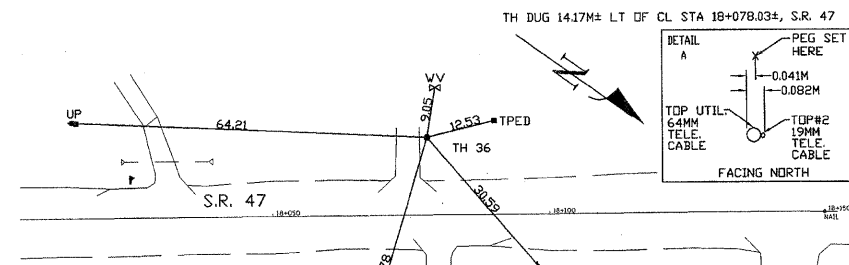
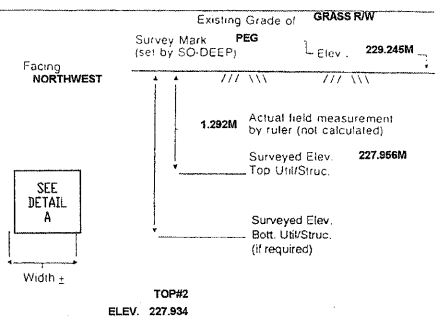
Soil Type **MOIST BROWN**

Field Condition **IN GRASS RW**

T.H. tied to **PEG**

**(1) 64MM & (1) 19MM TELE. CABLE**  
Size/Material/Type  
Portion of pipe exposed for O.D. measurement:  
**FULL**

Remarks: **NONE**



- RW = Rights of Way
- N.T.S. = Not to Scale
- PCC = Precast Concrete
- COND. = Conduit
- CONC. = Concrete
- O.D. = Outside Diameter
- C.I. = Cast Iron
- D.I. = Ductile Iron
- RPC = Rough Pour Concrete
- CL = Centerline
- T.C. = Terra Cotta
- PLAS. = Plastic
- BL. = Base Line
- ELEC. = Electric
- TELE. = Telephone
- T.H. = Test Hole
- SW = Sidewalk
- DW = Driveway
- BM = Benchmark
- C.B. = Catch Basin
- GV = Gas Valve
- Sewer Manhole
- Test Hole
- Fire Hydrant
- Pole
- Fence Line
- Electric Manhole
- T.S. = Traverse Station
- Valve
- Water Meter
- Telephone Manhole
- Telephone Pedestal



**The Subsurface Utility Engineering Company**  
449 Munroe Falls Road  
Tallmadge, OH 44278  
(330) 794-4455

### So-Deep Test Hole Certification Form - Metric

© So-Deep 1988, 1994

So-Deep Corporate Office  
8397 Euclid Avenue  
Manassas Park, VA 20111  
(703)361-6005

Control # **SILC078**  
Test Hole # **37**  
Plan Scale **1:250**  
Sheet # **2**  
Proposed Date **GRADE CHANGE JULY 21, 2009**

Civ. County, State **CITY OF YORKVILLE, IL**  
Gen. Loc. **SR 47 48M± N OF SARAVANOS DRIVE**  
Recorded Size/Material/Type **UNK. SIZE & TYPE (AT&T) TELE. LINE**  
Foreman/Truck#/Form By **J. CLINE / 219 / R. MOONEY**

B.M. 1 Elev. = **226.971M**  
is **GIVEN**  
Description: **CHIS "X" SET TOP RIM SMH, 20M± RT OF CL STA 18+222±, S.R. 47**

B.M. 2 Elev. = **229.242M**  
is **GIVEN**  
Description: **CHIS "X" SET TOP RIM SMH, 22M± RT OF CL STA 18+134±, S.R. 47**

SO-DEEP will attempt to use the BM#1 most applicable to your design. If however, BMs differ by more than 0.015 m, resulting differences could cause design conflicts.

Benchmarks check **BY 0.009M**  
Elevations are referenced to **B.M.#1**

Recorded Size/Type of utility **WAS FOUND**

There **WERE** additional utilities in the test hole

The utility **WAS** in good condition.

Paving Thickness and type **NO PAVING**

Color of ribbon installed **ORANGE**

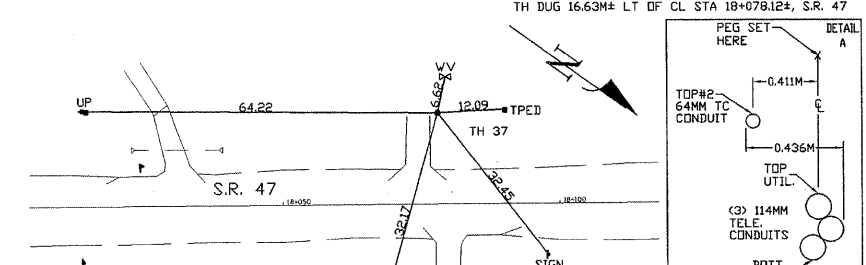
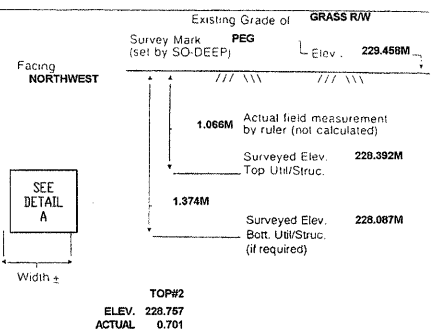
Soil Type **MOIST BROWN**

Field Condition **IN GRASS RW**

T.H. tied to **PEG**

**(1) 64MM TC CONDUIT & (3) 114MM PLAS. TELE. CONDUITS\***  
Size/Material/Type  
Portion of pipe exposed for O.D. measurement:  
**FULL**

Remarks: **\* CREW ALSO FOUND A 64MM T.C. CONDUIT RUNNING ABOVE AND PARALLEL TO THE TELE. CONDUITS.**



- RW = Rights of Way
- N.T.S. = Not to Scale
- PCC = Precast Concrete
- COND. = Conduit
- CONC. = Concrete
- O.D. = Outside Diameter
- C.I. = Cast Iron
- D.I. = Ductile Iron
- RPC = Rough Pour Concrete
- CL = Centerline
- T.C. = Terra Cotta
- PLAS. = Plastic
- BL. = Base Line
- ELEC. = Electric
- TELE. = Telephone
- T.H. = Test Hole
- SW = Sidewalk
- DW = Driveway
- BM = Benchmark
- C.B. = Catch Basin
- GV = Gas Valve
- Sewer Manhole
- Test Hole
- Fire Hydrant
- Pole
- Fence Line
- Electric Manhole
- T.S. = Traverse Station
- Valve
- Water Meter
- Telephone Manhole
- Telephone Pedestal

FILE: 391-496-Utility Test Hole sheets.dgn  
PLOTTED: 8/11/2011

REVISIONS	
NAME	DATE

ILLINOIS DEPARTMENT OF TRANSPORTATION

## UTILITY TEST HOLE RECORD

DRAWN BY \_\_\_\_\_

CHECKED BY \_\_\_\_\_

DATE \_\_\_\_\_

HMG JOB NO. 5122