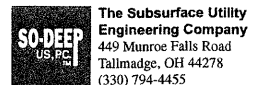


F.A.P. RTE.	SECTION	COUNTY	TOTAL SHEETS	SHEET NO.
326	(SCS,13C,108,109)R	KENDALL	931	402
STA.	TO STA.			
FED. ROAD DIST. NO.	ILLINOIS FED. AID PROJECT			



The Subsurface Utility Engineering Company

So-Deep Test Hole Certification Form - Metric

City, County, State: **CITY OF YORKVILLE, IL**
 Gen. Loc: **SW CORNER S.R. 47 & STAGECOACH TRAIL**
 Recorded Size/Material/Type: **305MM UNK. TYPE (YORKVILLE) WATER LINE**
 Foreman/Truck#/Form By: **J. CLINE / 219 / R. MOONEY**

So-Deep Corporate Office
 8397 Euclid Avenue
 Manassas Park, VA 20111
 (703)361-6005
 Control # **SILC078**
 Test Hole # **38**
 Plan Scale **1:250**
 Sheet # **31**
 Proposed Date **GRADE CHANGE JULY 21, 2009**

B.M. 1 Elev = **221.600M**
 is GIVEN Description: **CHIS "X" SET TOP RIM SMH, 23M± LT OF CL STA 18+404±, S.R. 47**

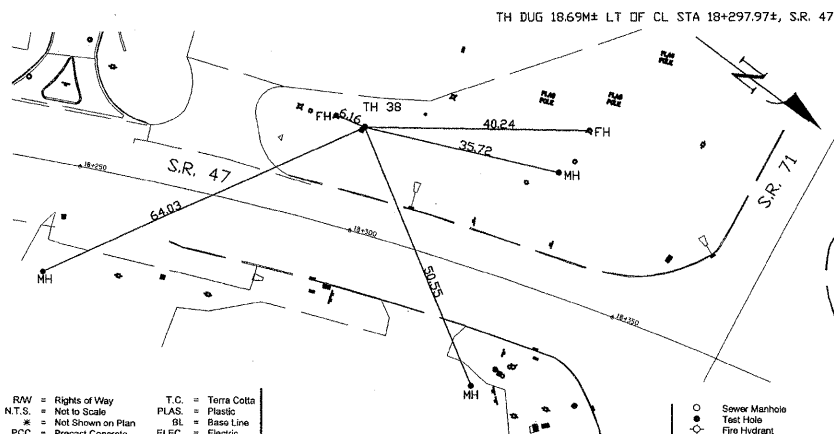
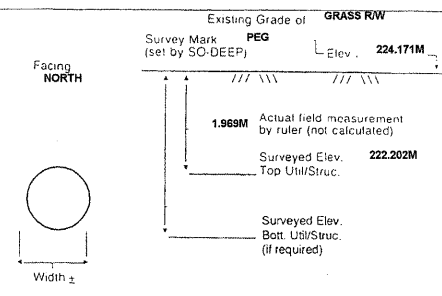
B.M. 2 Elev = **223.400M**
 is GIVEN Description: **CHIS "X" SET TOP RIM SMH, 21M± LT OF CL STA 18+332±, S.R. 47**

SO-DEEP will attempt to use the BM# most applicable to your design. If however, BMs differ by more than 0.015 m, resulting differences could cause design conflicts.

Benchmarks check **BY 0.007M**
 Elevations are referenced to **B.M.#2**

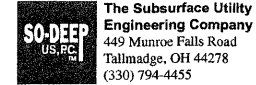
Recorded Size/Type of utility **WAS FOUND**

There **WERE NOT** additional utilities in the test hole
 The utility **WAS** in good condition.
 Paving Thickness and type **NO PAVING**
 Color of ribbon installed **BLUE**
 Soil Type **MOIST BROWN**
 Field Condition **IN GRASS RW**
 T.H. tied to **PEG**
324MM D.I. WATER LINE
 Size/Material/Type
 Portion of pipe exposed for O.D. measurement:
FULL
 Remarks: **NONE**



- | | | |
|---------------------------|--------------------|-----------------------------|
| RW = Rights of Way | T.C. = Terra Cotta | ○ = Sewer Manhole |
| N.T.S. = Not to Scale | PLAS. = Plastic | ● = Test Hole |
| * = Not Shown on Plan | BL = Base Line | ○ = Fire Hydrant |
| PCC = Precast Concrete | ELEC. = Electric | □ = Pole |
| COND. = Conduit | TELE = Telephone | ○ = Electric Manhole |
| CONC. = Concrete | T.H. = Test Hole | ○ = Telephone Manhole |
| O.D. = Outside Diameter | SW = Sidewalk | ○ = T.S. = Traverse Station |
| C.I. = Cast Iron | DW = Driveway | ○ = Valve |
| D.I. = Ductile Iron | BM = Benchmark | ○ = Water Meter |
| RPC = Rough Pour Concrete | C.B. = Catch Basin | ○ = Telephone Manhole |
| CL = Centerline | GV = Gas Valve | □ = Telephone Pedestal |

Performing out-of-sight work... with vision!
 All values are shown in meters (m) or millimeters (mm).
 To convert to feet multiply meters by 3.2808.
 Note: To eliminate mistakes and check this work, So-Deep suggests you scale and plot all dimensions onto the plans and review all elevations carefully. So-Deep is responsible only for information shown on our forms.



The Subsurface Utility Engineering Company

So-Deep Test Hole Certification Form - Metric

City, County, State: **CITY OF YORKVILLE, IL**
 Gen. Loc: **SW CORNER S.R. 47 & STAGECOACH TRAIL**
 Recorded Size/Material/Type: **305MM D.I. (YORKVILLE) WATER LINE**
 Foreman/Truck#/Form By: **J. CLINE / 219 / R. MOONEY**

So-Deep Corporate Office
 8397 Euclid Avenue
 Manassas Park, VA 20111
 (703)361-6005
 Control # **SILC078**
 Test Hole # **39**
 Plan Scale **1:250**
 Sheet # **32**
 Proposed Date **GRADE CHANGE JULY 21, 2009**

B.M. 1 Elev = **221.600M**
 is GIVEN Description: **CHIS "X" SET TOP RIM SMH, 23M± LT OF CL STA 18+404±, S.R. 47**

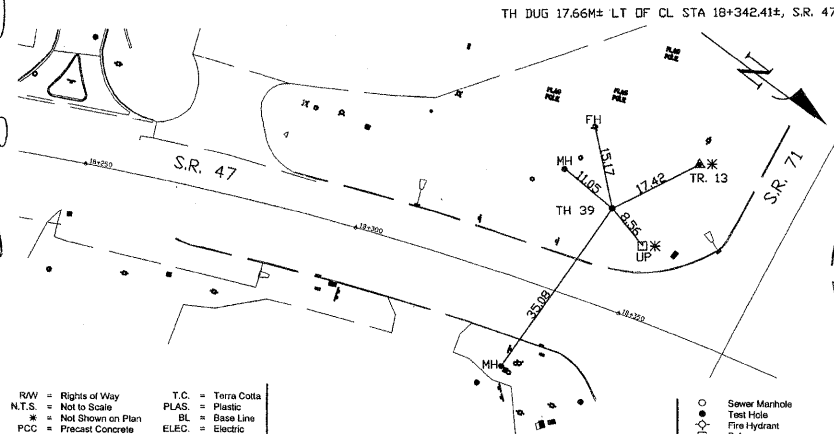
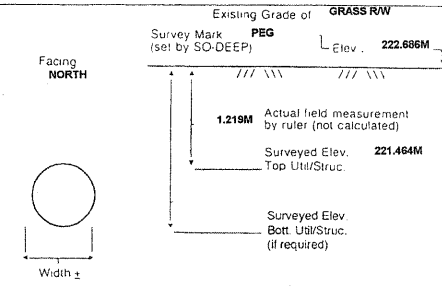
B.M. 2 Elev = **223.400M**
 is GIVEN Description: **CHIS "X" SET TOP RIM SMH, 21M± LT OF CL STA 18+332±, S.R. 47**

SO-DEEP will attempt to use the BM# most applicable to your design. If however, BMs differ by more than 0.015 m, resulting differences could cause design conflicts.

Benchmarks check **BY 0.007M**
 Elevations are referenced to **B.M.#2**

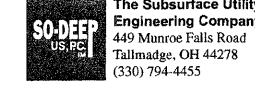
Recorded Size/Type of utility **WAS FOUND**

There **WERE NOT** additional utilities in the test hole
 The utility **WAS** in good condition.
 Paving Thickness and type **NO PAVING**
 Color of ribbon installed **BLUE**
 Soil Type **MOIST BROWN**
 Field Condition **IN GRASS RW**
 T.H. tied to **PEG**
324MM D.I. WATER LINE
 Size/Material/Type
 Portion of pipe exposed for O.D. measurement:
FULL
 Remarks: **NONE**



- | | | |
|---------------------------|--------------------|-----------------------------|
| RW = Rights of Way | T.C. = Terra Cotta | ○ = Sewer Manhole |
| N.T.S. = Not to Scale | PLAS. = Plastic | ● = Test Hole |
| * = Not Shown on Plan | BL = Base Line | ○ = Fire Hydrant |
| PCC = Precast Concrete | ELEC. = Electric | □ = Pole |
| COND. = Conduit | TELE = Telephone | ○ = Electric Manhole |
| CONC. = Concrete | T.H. = Test Hole | ○ = Telephone Manhole |
| O.D. = Outside Diameter | SW = Sidewalk | ○ = T.S. = Traverse Station |
| C.I. = Cast Iron | DW = Driveway | ○ = Valve |
| D.I. = Ductile Iron | BM = Benchmark | ○ = Water Meter |
| RPC = Rough Pour Concrete | C.B. = Catch Basin | ○ = Telephone Manhole |
| CL = Centerline | GV = Gas Valve | □ = Telephone Pedestal |

Performing out-of-sight work... with vision!
 All values are shown in meters (m) or millimeters (mm).
 To convert to feet multiply meters by 3.2808.
 Note: To eliminate mistakes and check this work, So-Deep suggests you scale and plot all dimensions onto the plans and review all elevations carefully. So-Deep is responsible only for information shown on our forms.



The Subsurface Utility Engineering Company

So-Deep Test Hole Certification Form - Metric

City, County, State: **CITY OF YORKVILLE, IL**
 Gen. Loc: **S.R.47 JUST S OF BLDG. #6780**
 Recorded Size/Material/Type: **305MM UNK. TYPE (YORKVILLE) WATER LINE**
 Foreman/Truck#/Form By: **J. CLINE / 219 / R. MOONEY**

So-Deep Corporate Office
 8397 Euclid Avenue
 Manassas Park, VA 20111
 (703)361-6005
 Control # **SILC078**
 Test Hole # **40**
 Plan Scale **1:250**
 Sheet # **33**
 Proposed Date **GRADE CHANGE JULY 21, 2009**

B.M. 1 Elev = **216.388M**
 is GIVEN Description: **CHIS "X" SET TOP RIM STM MH, 15M± RT OF CL STA 18+591±, S.R. 47**

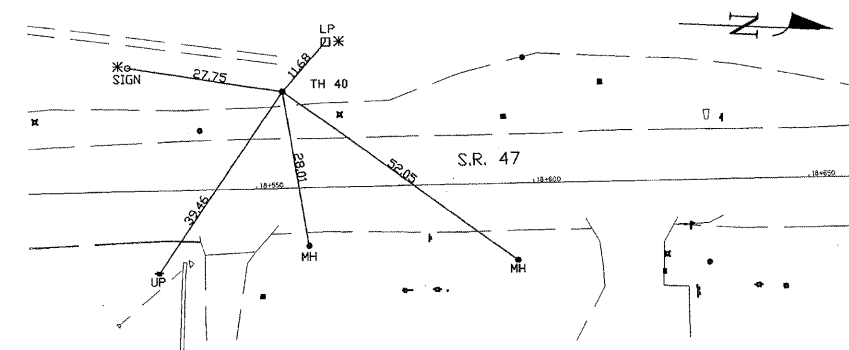
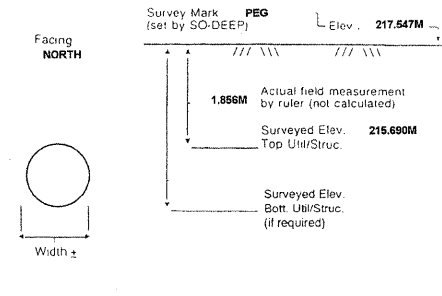
B.M. 2 Elev = **216.471M**
 is GIVEN Description: **CHIS "X" SET TOP RIM STM MH, 16M± RT OF CL STA 18+597±, S.R. 47**

SO-DEEP will attempt to use the BM# most applicable to your design. If however, BMs differ by more than 0.015 m, resulting differences could cause design conflicts.

Benchmarks check **BY 0.007M**
 Elevations are referenced to **B.M.#2**

Recorded Size/Type of utility **WAS FOUND**

There **WERE NOT** additional utilities in the test hole
 The utility **WAS** in good condition.
 Paving Thickness and type **NO PAVING**
 Color of ribbon installed **BLUE**
 Soil Type **MOIST BROWN**
 Field Condition **IN GRASS RW**
 T.H. tied to **PEG**
324MM D.I. WATER LINE
 Size/Material/Type
 Portion of pipe exposed for O.D. measurement:
FULL
 Remarks: **NONE**



- | | | |
|---------------------------|--------------------|-----------------------------|
| RW = Rights of Way | T.C. = Terra Cotta | ○ = Sewer Manhole |
| N.T.S. = Not to Scale | PLAS. = Plastic | ● = Test Hole |
| * = Not Shown on Plan | BL = Base Line | ○ = Fire Hydrant |
| PCC = Precast Concrete | ELEC. = Electric | □ = Pole |
| COND. = Conduit | TELE = Telephone | ○ = Electric Manhole |
| CONC. = Concrete | T.H. = Test Hole | ○ = Telephone Manhole |
| O.D. = Outside Diameter | SW = Sidewalk | ○ = T.S. = Traverse Station |
| C.I. = Cast Iron | DW = Driveway | ○ = Valve |
| D.I. = Ductile Iron | BM = Benchmark | ○ = Water Meter |
| RPC = Rough Pour Concrete | C.B. = Catch Basin | ○ = Telephone Manhole |
| CL = Centerline | GV = Gas Valve | □ = Telephone Pedestal |

Performing out-of-sight work... with vision!
 All values are shown in meters (m) or millimeters (mm).
 To convert to feet multiply meters by 3.2808.
 Note: To eliminate mistakes and check this work, So-Deep suggests you scale and plot all dimensions onto the plans and review all elevations carefully. So-Deep is responsible only for information shown on our forms.

FILE: 391-496_UTILITY Test Hole sheets.dgn
 PLOTTED: 8/11/2011

REVISIONS		ILLINOIS DEPARTMENT OF TRANSPORTATION
NAME	DATE	
		UTILITY TEST HOLE RECORD
DATE		DRAWN BY
		CHECKED BY