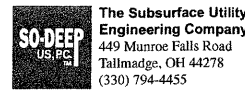


F.A.P. RTE.	SECTION	COUNTY	TOTAL SHEETS	SHEET NO.
326	(5CS,13C,108,109)R	KENDALL	931	405
STA.	TO STA.			
FED. ROAD DIST. NO.	ILLINOIS	FED. AID PROJECT		

CONTRACT NO. 66671



So-Deep Test Hole Certification Form - Metric

City, County, State: **CITY OF YORKVILLE, IL**
 Gen. Loc: **S.R. 47 JUST N OF SPRING ST.**
 Recorded Size/Type of Utility: **UNK. SIZE & TYPE (AT&T) TELE. LINE**
 Foreman/Truck#/Form By: **J. CLINE / 219 / R. MOONEY**

So-Deep Corporate Office
 8397 Euclid Avenue
 Manassas Park, VA 20111
 (703)361-6005

Control # **47**
 Test Hole # **1:250**
 Plan Scale **15**
 Sheet # **GRADE CHANGE**
 Proposed Date **JULY 14, 2009**

Condition of paving prior to work: **NO PAVING**

B.M. 1 Elev. = **190.533M**
 is GIVEN
 Description: **CHIS "X" SET TOP RIM STM MH, 11M± LT OF CL STA 21+600±, S.R. 47**

B.M. 2 Elev. = **190.734M**
 is GIVEN
 Description: **CHIS "X" SET TOP RIM STM MH, 12M± RT OF CL STA 21+594±, S.R. 47**

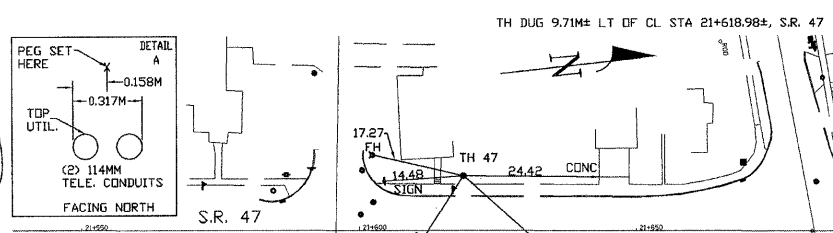
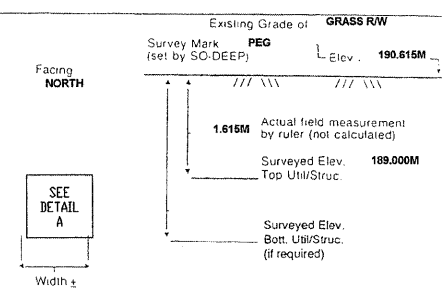
Benchmarks check **BY 0.009M**
 Elevations are referenced to **B.M.#2**

Recorded Size/Type of utility **WAS FOUND**
 There **WERE NOT** additional utilities in the test hole
 The utility **WAS** in good condition.
 Paving Thickness and type **NO PAVING**
 Color of ribbon installed **ORANGE**
 Soil Type **MOIST BROWN**
 Field Condition **IN GRASS R/W**
 T.H. tied to **PEG**

(2) **114MM PLASTIC TELE. CONDUITS**
 Size/Material/Type
 Portion of pipe exposed for O.D. measurement:
FULL

Remarks: **NONE**

So-DEEP will attempt to use the BM#1 most applicable to your design. If however, BM#s differ by more than 0.015 m, resulting differences could cause design conflicts.

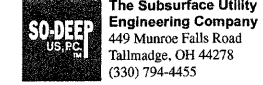


TH DUG 9.71M± LT OF CL STA 21+618.98±, S.R. 47

PREPARED WITHOUT TELEPHONE RECORDS. WE ACCEPT NO LIABILITY FOR FACILITIES OTHER THAN THOSE DEPICTED ON THIS CERTIFICATION FORM.

Performing out-of-sight work...with vision™
 All values are shown in meters (m) or millimeters (mm).
 To convert to feet multiply meters by 3.2808.
 Note: To eliminate mistakes and check this work, So-Deep suggests you scale and plot all dimensions onto this plan and review all elevations carefully. So-Deep is responsible only for information shown on our forms.

- RAW = Rights of Way
- NT.S. = Not to Scale
- PLAS. = Plastic
- BL = Base Line
- PCC = Precast Concrete
- COND. = Conduit
- CONC. = Concrete
- O.D. = Outside Diameter
- C.I. = Cast Iron
- D.I. = Ductile Iron
- RPC = Rough Pour Concrete
- CL = Centerline
- T.C. = Terra Cotta
- PLAS. = Plastic
- BL = Base Line
- ELEC. = Electric
- TELE. = Telephone
- T.H. = Test Hole
- SW = Sidewalk
- DW = Driveway
- BM = Benchmark
- C.B. = Catch Basin
- GV = Gas Valve
- SM = Sewer Manhole
- TH = Test Hole
- FM = Fire Hydrant
- Pole = Pole
- F.L. = Fence Line
- EM = Electric Manhole
- T.S. = Traverse Station
- Valve = Valve
- Water Meter = Water Meter
- Telephone Manhole = Telephone Manhole
- Telephone Pedestal = Telephone Pedestal



So-Deep Test Hole Certification Form - Metric

City, County, State: **CITY OF YORKVILLE, IL**
 Gen. Loc: **S.R. 47, 200M± N OF US 34**
 Recorded Size/Type of Utility: **UNK. SIZE & TYPE (AT&T) TELE. LINE**
 Foreman/Truck#/Form By: **J. CLINE / 219 / R. MOONEY**

So-Deep Corporate Office
 8397 Euclid Avenue
 Manassas Park, VA 20111
 (703)361-6005

Control # **SILC078**
 Test Hole # **48**
 Plan Scale **1:250**
 Sheet # **39**
 Proposed Date **JULY 10, 2009**

Condition of paving prior to work: **NO PAVING**

B.M. 1 Elev. = **194.736M**
 is GIVEN
 Description: **CHIS "X" SET TOP RIM STM MH, 16M± LT OF CL STA 22+827±, S.R. 47**

B.M. 2 Elev. = **194.692M**
 is GIVEN
 Description: **CHIS "X" SET TOP RIM STM MH, 43M± RT OF CL STA 22+879±, S.R. 47**

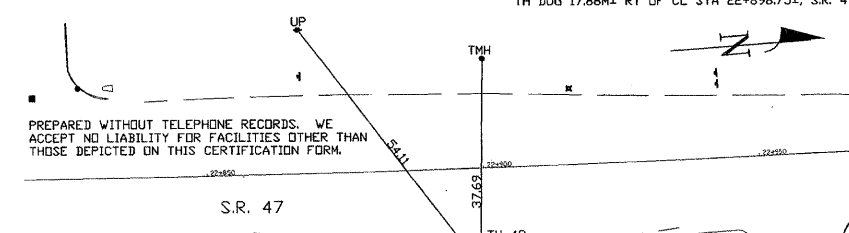
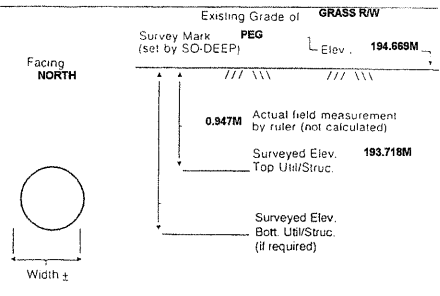
Benchmarks check **BY 0.002M**
 Elevations are referenced to **B.M.#1**

Recorded Size/Type of utility **WAS FOUND**
 There **WERE NOT** additional utilities in the test hole
 The utility **WAS** in good condition.
 Paving Thickness and type **NO PAVING**
 Color of ribbon installed **ORANGE**
 Soil Type **MOIST BROWN**
 Field Condition **IN GRASS R/W**
 T.H. tied to **PEG**

44MM TELE. CABLE
 Size/Material/Type
 Portion of pipe exposed for O.D. measurement:
FULL

Remarks: **NONE**

So-DEEP will attempt to use the BM#1 most applicable to your design. If however, BM#s differ by more than 0.015 m, resulting differences could cause design conflicts.

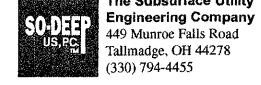


TH DUG 17.88M± RT OF CL STA 22+898.75±, S.R. 47

PREPARED WITHOUT TELEPHONE RECORDS. WE ACCEPT NO LIABILITY FOR FACILITIES OTHER THAN THOSE DEPICTED ON THIS CERTIFICATION FORM.

Performing out-of-sight work...with vision™
 All values are shown in meters (m) or millimeters (mm).
 To convert to feet multiply meters by 3.2808.
 Note: To eliminate mistakes and check this work, So-Deep suggests you scale and plot all dimensions onto this plan and review all elevations carefully. So-Deep is responsible only for information shown on our forms.

- RAW = Rights of Way
- NT.S. = Not to Scale
- PLAS. = Plastic
- BL = Base Line
- PCC = Precast Concrete
- COND. = Conduit
- CONC. = Concrete
- O.D. = Outside Diameter
- C.I. = Cast Iron
- D.I. = Ductile Iron
- RPC = Rough Pour Concrete
- CL = Centerline
- T.C. = Terra Cotta
- PLAS. = Plastic
- BL = Base Line
- ELEC. = Electric
- TELE. = Telephone
- T.H. = Test Hole
- SW = Sidewalk
- DW = Driveway
- BM = Benchmark
- C.B. = Catch Basin
- GV = Gas Valve
- SM = Sewer Manhole
- TH = Test Hole
- FM = Fire Hydrant
- Pole = Pole
- F.L. = Fence Line
- EM = Electric Manhole
- T.S. = Traverse Station
- Valve = Valve
- Water Meter = Water Meter
- Telephone Manhole = Telephone Manhole
- Telephone Pedestal = Telephone Pedestal



So-Deep Test Hole Certification Form - Metric

City, County, State: **CITY OF YORKVILLE, IL**
 Gen. Loc: **S.R. 47, 200M± N OF US 34**
 Recorded Size/Type of Utility: **51MM UNK. TYPE (NICOR) GAS LINE**
 Foreman/Truck#/Form By: **J. CLINE / 219 / R. MOONEY**

So-Deep Corporate Office
 8397 Euclid Avenue
 Manassas Park, VA 20111
 (703)361-6005

Control # **SILC078**
 Test Hole # **49**
 Plan Scale **1:250**
 Sheet # **39**
 Proposed Date **JULY 10, 2009**

Condition of paving prior to work: **NO PAVING**

B.M. 1 Elev. = **194.736M**
 is GIVEN
 Description: **CHIS "X" SET TOP RIM STM MH, 16M± LT OF CL STA 22+827±, S.R. 47**

B.M. 2 Elev. = **194.692M**
 is GIVEN
 Description: **CHIS "X" SET TOP RIM STM MH, 43M± RT OF CL STA 22+879±, S.R. 47**

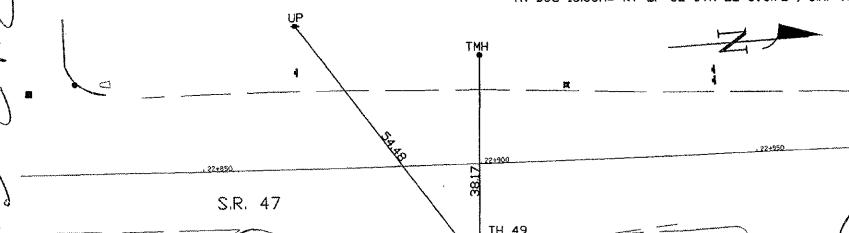
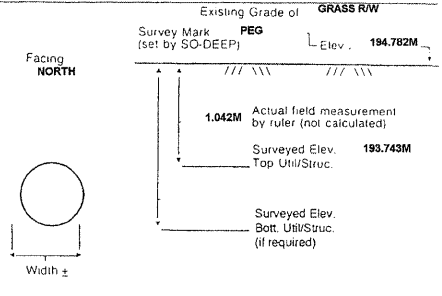
Benchmarks check **BY 0.002M**
 Elevations are referenced to **B.M.#1**

Recorded Size/Type of utility **WAS FOUND**
 There **WERE NOT** additional utilities in the test hole
 The utility **WAS** in good condition.
 Paving Thickness and type **NO PAVING**
 Color of ribbon installed **YELLOW**
 Soil Type **MOIST BROWN**
 Field Condition **IN GRASS R/W**
 T.H. tied to **PEG**

64MM COATED STL. GAS LINE
 Size/Material/Type
 Portion of pipe exposed for O.D. measurement:
FULL

Remarks: **NONE**

So-DEEP will attempt to use the BM#1 most applicable to your design. If however, BM#s differ by more than 0.015 m, resulting differences could cause design conflicts.



TH DUG 18.36M± RT OF CL STA 22+898.72±, S.R. 47

PREPARED WITHOUT TELEPHONE RECORDS. WE ACCEPT NO LIABILITY FOR FACILITIES OTHER THAN THOSE DEPICTED ON THIS CERTIFICATION FORM.

Performing out-of-sight work...with vision™
 All values are shown in meters (m) or millimeters (mm).
 To convert to feet multiply meters by 3.2808.
 Note: To eliminate mistakes and check this work, So-Deep suggests you scale and plot all dimensions onto this plan and review all elevations carefully. So-Deep is responsible only for information shown on our forms.

- RAW = Rights of Way
- NT.S. = Not to Scale
- PLAS. = Plastic
- BL = Base Line
- PCC = Precast Concrete
- COND. = Conduit
- CONC. = Concrete
- O.D. = Outside Diameter
- C.I. = Cast Iron
- D.I. = Ductile Iron
- RPC = Rough Pour Concrete
- CL = Centerline
- T.C. = Terra Cotta
- PLAS. = Plastic
- BL = Base Line
- ELEC. = Electric
- TELE. = Telephone
- T.H. = Test Hole
- SW = Sidewalk
- DW = Driveway
- BM = Benchmark
- C.B. = Catch Basin
- GV = Gas Valve
- SM = Sewer Manhole
- TH = Test Hole
- FM = Fire Hydrant
- Pole = Pole
- F.L. = Fence Line
- EM = Electric Manhole
- T.S. = Traverse Station
- Valve = Valve
- Water Meter = Water Meter
- Telephone Manhole = Telephone Manhole
- Telephone Pedestal = Telephone Pedestal

REVISIONS		ILLINOIS DEPARTMENT OF TRANSPORTATION
NAME	DATE	
		UTILITY TEST HOLE RECORD DRAWN BY _____ CHECKED BY _____ DATE _____

FILE: 391-406.Utility Test Hole sheets.dgn
 PLOTTED: 8/11/2011

HMG JOB NO. 5122