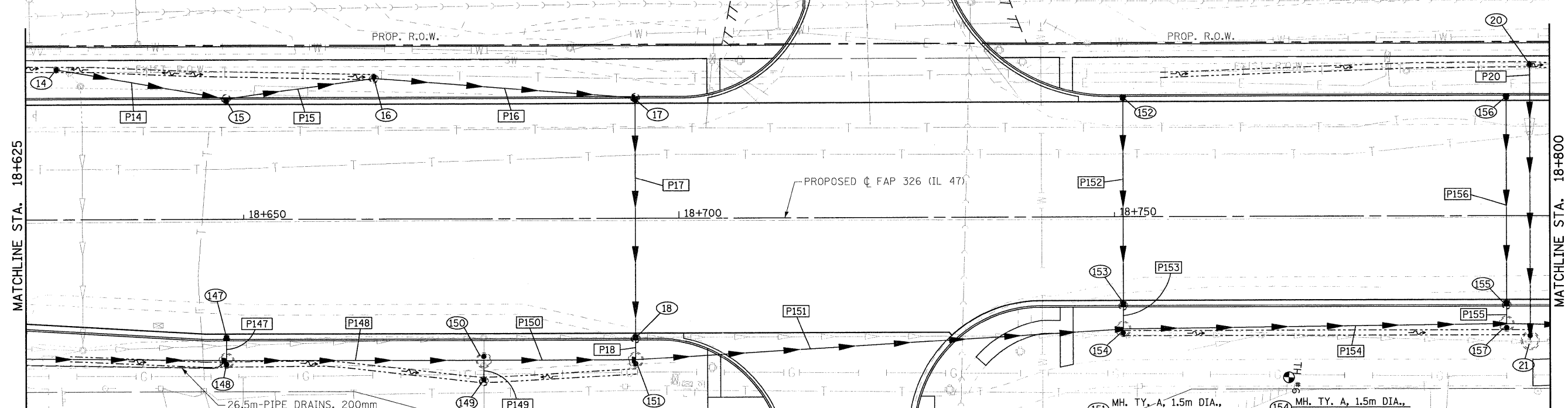
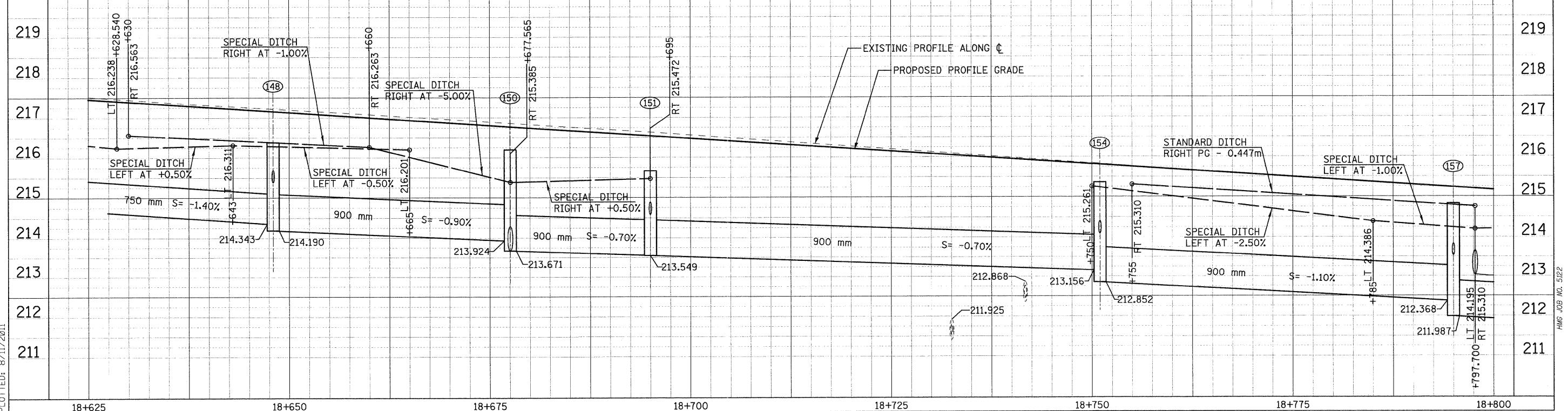
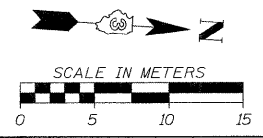


F.A.P. RTE.	SECTION	COUNTY	TOTAL SHEETS NO.
326	(5C5,13C,108,109)R	KENDALL	931
STA.	TO STA.		SHEET NO.
			408
FED. ROAD DIST. NO.	ILLINOIS FED. AID PROJECT		

- P14 STORM SEWER, CL.A, R.G., 300
19.124m AT 1.0%
- P15 STORM SEWER, CL.A, R.G., 300
16.341m AT 1.0%
- P16 STORM SEWER, CL.A, R.G., 300
29.272m AT 1.0%
- P17 STORM SEWER, CL.A, R.G., 300
26.816m AT 1.0%
- P18 STORM SEWER, CL.A, R.G., 300
1,303m AT 2.0%
- P20 STORM SEWER, CL.A, R.G., 600
30.640m AT 0.30%
- P147 STORM SEWER, CL.A, R.G., 300
1.636m AT 2.00%
- P148 STORM SEWER, CL.A, R.G., 900
28.514m AT 0.90%
- P149 STORM SEWER, CL.A, R.G., 600
1.466m AT 0.50%
- P150 STORM SEWER, CL.A, R.G., 900
16.414m AT 0.70%
- P151 STORM SEWER, CL.A, R.G., 900
55.065m AT 0.70%
- P152 STORM SEWER, CL.A, R.G., 300
23.248m AT 2.0%
- P153 STORM SEWER, CL.A, R.G., 300
1.539m AT 2.0%
- P154 STORM SEWER, CL.A, R.G., 900
42.967m AT 1.10%
- P155 STORM SEWER, CL.A, R.G., 300
1.039m AT 2.0%
- P156 STORM SEWER, CL.A, R.G., 300
23.248m AT 2.0%



- 14 INLET TY. A, TY. 8 GRATE
STA. 18+628.538, 17.24m LT.
GRATE 216.238
INV. 215.349
- 15 INLET TY. B, TY. 3V F&G
STA. 18+648, 13.818m LT.
GRATE 216.858
INV. 215.151
- 16 INLET TY. B, TY. 8 GRATE
STA. 18+665, 16.156m LT.
GRATE 216.201
INV. 214.980
- 17 INLET TY. B, TY. 3V F&G
STA. 18+695, 13.818m LT.
GRATE 216.242
INV. 214.679
- 18 INLET TY. B, TY. 3V F&G
STA. 18+695, 13.817m LT.
GRATE 216.242
INV. 214.403
- 20 INLET TY. B, TY. 8 GRATE
STA. 18+797.7, 17.365m LT.
GRATE 214.195
INV. 213.204
- 21 MH. TY. A, 1.8m DIA.,
TY. 8 GRATE
STA. 18+797, 14.359m RT.
GRATE 214.750
INV. (W) 213.046
- 147 INLET TY. A, TY. 3V F&G
STA. 18+648, 13.667m RT.
GRATE 216.858
INV. 215.436
- 148 MH. TY. A, 1.5m DIA.,
TY. 8 GRATE
STA. 18+648, 16.265m RT.
GRATE 216.383
INV. (S) 214.343
INV. (N) 214.190
INV. (W) 215.384
- 149 INLET TY. B, TY. 8 GRATE
STA. 18+677.549, 18.664m RT.
GRATE 215.386
INV. 213.683
- 151 MH. TY. A, 1.5m DIA.,
TY. 1 FRAME, CL. LID
STA. 18+677.550, 16.265 RT.
GRATE 216.196
INV. (S) 213.924
INV. (N,E) 213.671
- 152 INLET TY. A, TY. 3V F&G
STA. 18+751, 13.668m LT.
GRATE 215.515
INV. 214.626
- 153 INLET TY. B, TY. 3V F&G
STA. 18+751, 10.217m LT.
GRATE 215.580
INV. 214.148
- 154 MH. TY. A, 1.5m DIA.,
TY. 8 GRATE
STA. 18+751, 12.9m RT.
GRATE 215.362
INV. (S) 213.156
INV. (N) 212.852
INV. (W) 214.095
- 155 INLET TY. B, TY. 3V F&G
STA. 18+795, 10.217m RT.
GRATE 215.004
INV. 213.571
- 156 INLET TY. A, TY. 3V F&G
STA. 18+795, 13.668m LT.
GRATE 214.938
INV. 214.049
- 157 MH. TY. A, 1.5m DIA.,
TY. 1 FRAME, CL. LID
STA. 18+795, 12.4m RT.
GRATE 214.824
INV. (S) 212.368
INV. (N) 211.987
INV. (W) 213.528



FILE: 408stm47_015.dgn
PLOTTED: 8/11/2011

HMG JOB NO. 5122