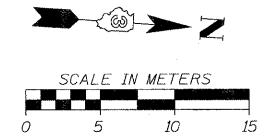
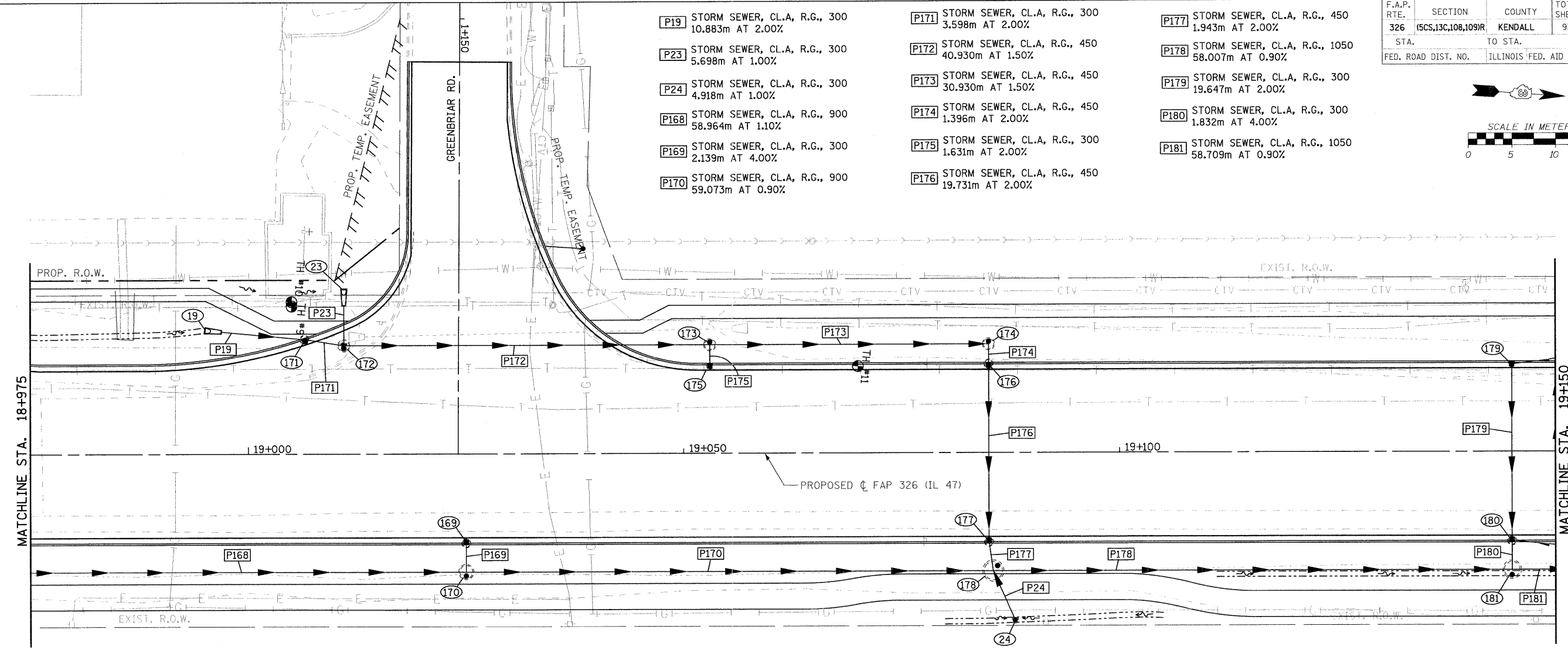


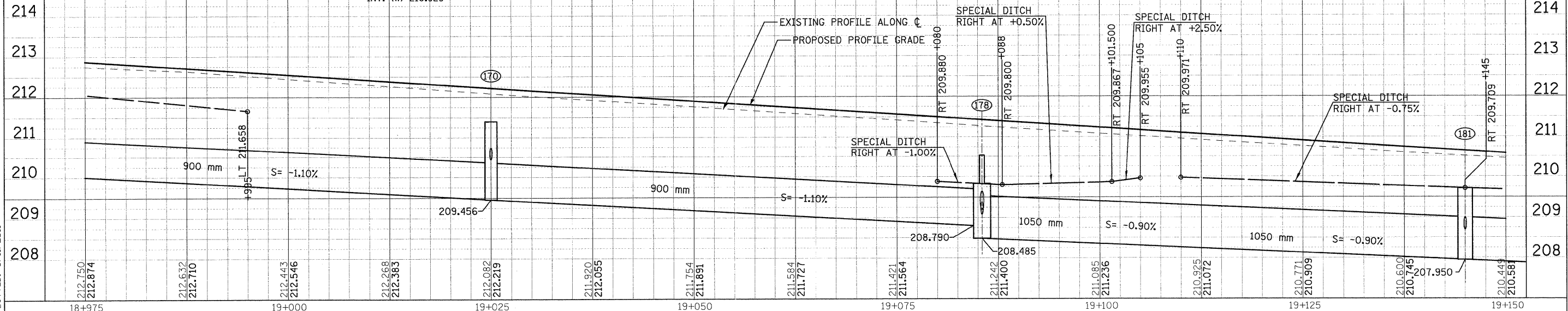
F.A.P. RTE.	SECTION	COUNTY	TOTAL SHEETS	SHEET NO.
326	(5CS,13C,10B,109R)	KENDALL	931	410
STA.		TO STA.		
FED. ROAD DIST. NO.		ILLINOIS FED. AID PROJECT		



- P19 STORM SEWER, CL.A, R.G., 300 10.883m AT 2.00%
- P23 STORM SEWER, CL.A, R.G., 300 5.698m AT 1.00%
- P24 STORM SEWER, CL.A, R.G., 300 4.918m AT 1.00%
- P168 STORM SEWER, CL.A, R.G., 900 58.964m AT 1.10%
- P169 STORM SEWER, CL.A, R.G., 300 2.139m AT 4.00%
- P170 STORM SEWER, CL.A, R.G., 900 59.073m AT 0.90%
- P171 STORM SEWER, CL.A, R.G., 300 3.598m AT 2.00%
- P172 STORM SEWER, CL.A, R.G., 450 40.930m AT 1.50%
- P173 STORM SEWER, CL.A, R.G., 450 30.930m AT 1.50%
- P174 STORM SEWER, CL.A, R.G., 450 1.396m AT 2.00%
- P175 STORM SEWER, CL.A, R.G., 300 1.631m AT 2.00%
- P176 STORM SEWER, CL.A, R.G., 450 19.731m AT 2.00%
- P177 STORM SEWER, CL.A, R.G., 450 1.943m AT 2.00%
- P178 STORM SEWER, CL.A, R.G., 1050 58.007m AT 0.90%
- P179 STORM SEWER, CL.A, R.G., 300 19.647m AT 2.00%
- P180 STORM SEWER, CL.A, R.G., 300 1.832m AT 4.00%
- P181 STORM SEWER, CL.A, R.G., 1050 58.709m AT 0.90%



- 19 FLARED END SECTION STA. 18+995, 14.250m LT. INV. 211.302
- 23 FLARED END SECTION STA. 19+011, 19m LT. INV. 210.994
- 169 INLET TY. B, TY. 3V F&G STA. 19+025, 10.217m RT. GRATE 211.991 INV. 210.569
- 170 MH. TY. A, 1.5m DIA., TY. 1 FRAME, CL. LID STA. 19+025, 13.5m RT. GRATE 211.397 INV. (N,S) 209.456 INV. (W) 210.437
- 171 INLET TY. B, TY. 3V F&G STA. 19+006.472, 13.204m LT. GRATE 212.168 INV. 211.072
- 172 MH. TY. A, 1.2m DIA. TY. 5 FRAME, CL. LID STA. 19+011, 12.5m LT. GRATE 212.190 INV. (S) 210.980 INV. (N) 210.828 INV. (W) 210.929
- 173 MH. TY. A, 1.2m DIA. TY. 1 FRAME, CL. LID STA. 19+053, 12.5m LT. GRATE 211.725 INV. 210.198
- 174 MH. TY. A, 1.2m DIA. TY. 1 FRAME, CL. LID STA. 19+085, 12.5m LT. GRATE 211.079 INV. 209.718
- 175 INLET TY. A, TY. 3V F&G STA. 19+053, 10.067m LT. GRATE 211.624 INV. 210.735
- 176 INLET TY. B, TY. 3V F&G STA. 19+085, 10.217m LT. GRATE 211.205 INV. 209.672
- 177 INLET TY. B, TY. 3V F&G STA. 19+085, 10.217m RT. GRATE 211.205 INV. 209.264
- 178 MH. TY. A, 2.1m DIA., TY. 1 FRAME, CL. LID STA. 19+085.5, 13.5m RT. GRATE 210.527 INV. (S) 208.790 INV. (N) 208.485 INV. (E) 209.078 INV. (W) 209.197
- 24 INLET TY. A, TY. 8 GRATE STA. 19+088, 19.165m LT. GRATE 209.800 INV. 209.140
- 180 INLET TY. B, TY. 3V F&G STA. 19+145, 10.217m RT. GRATE 210.419 INV. (W) 209.054 INV. (E) 208.826
- 181 MH. TY. A, 1.8m DIA., TY. 8 GRATE STA. 19+145, 13.35m RT. GRATE 209.709 INV. (S) 207.831 INV. (N) 207.526 INV. (W) 208.700



FILE: 410stun47\_07.dgn  
 PLOTTED: 8/11/2011  
 Sheet: 7  
 Author: 03.9081  
 Check: P.L.A.T.

HMG JOB NO. 5122