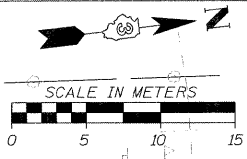
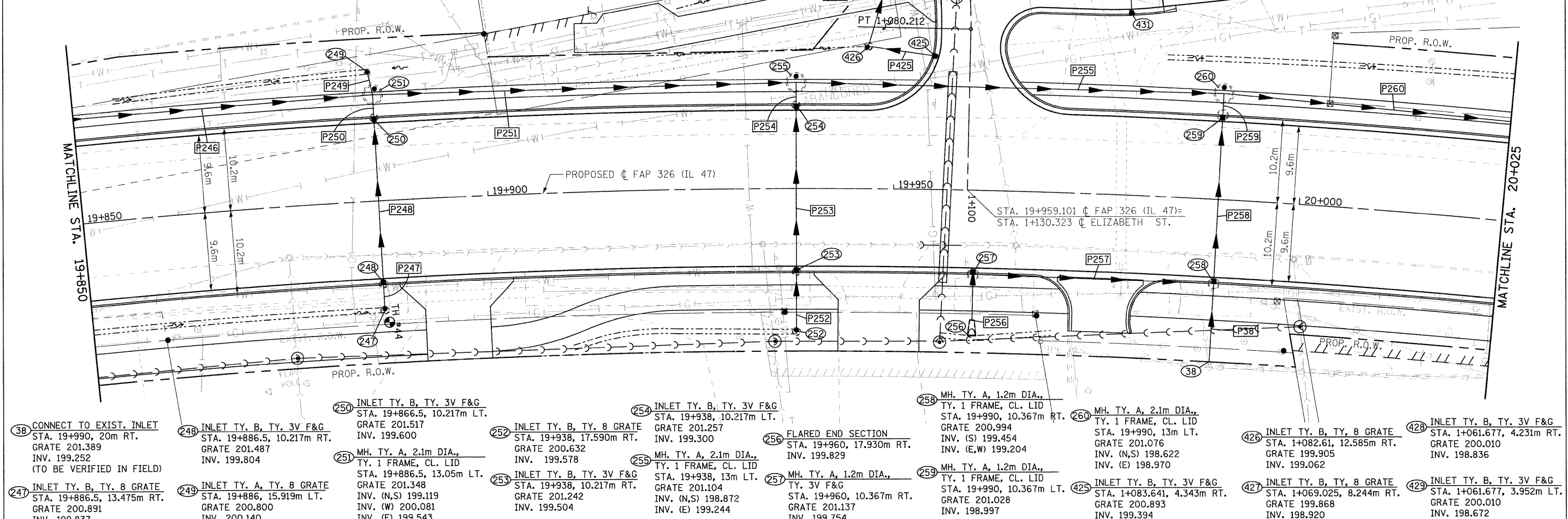


F.A.P. RTE.	SECTION	COUNTY	TOTAL SHEETS	SHEET NO.
326	(SCS,13C,108,109R)	KENDALL	931	415
STA. TO STA.		ILLINOIS FED. AID PROJECT		
FED. ROAD DIST. NO.		ILLINOIS FED. AID PROJECT		

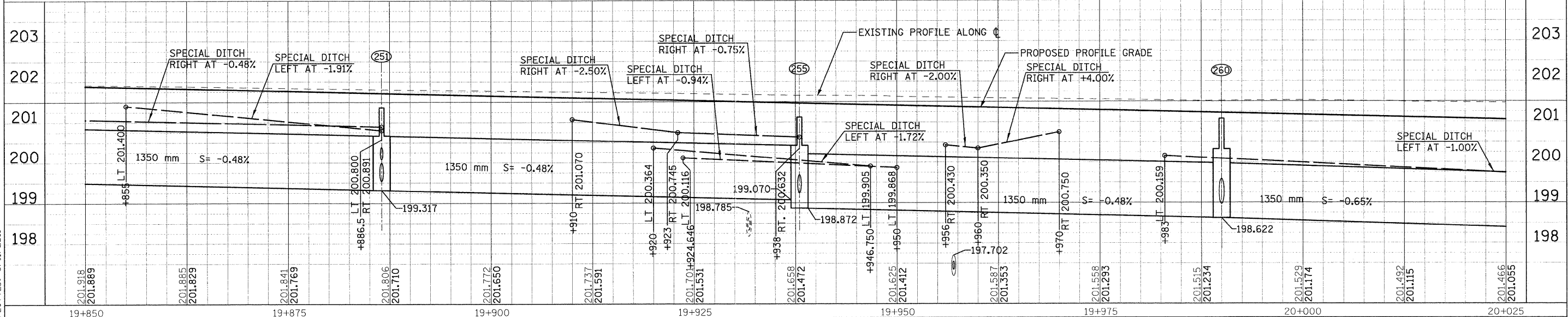


- P38 STORM SEWER, CL.A, R.G., 600 8.904m AT 0.50%
- P247 STORM SEWER, CL.A, R.G., 450 2.555m AT 1.0%
- P248 STORM SEWER, CL.A, R.G., 450 19.731m AT 1.0%
- P249 STORM SEWER, CL.A, R.G., 300 1.637m AT 2.0%
- P250 STORM SEWER, CL.A, R.G., 450 1.455m AT 2.0%
- P251 STORM SEWER, CL.A, R.G., 1350 50.149m AT 0.48%
- P252 STORM SEWER, CL.A, R.G., 450 6.670m AT 1.0%
- P253 STORM SEWER, CL.A, R.G., 450 19.731m AT 1.0%
- P254 STORM SEWER, CL.A, R.G., 450 1.405m AT 2.0%
- P255 STORM SEWER, CL.A, R.G., 1350 50.649m AT 0.48%
- P256 STORM SEWER, CL.A, R.G., 450 6.479m AT 1.0%
- P257 STORM SEWER, CL.A, R.G., 450 28.930m AT 1.0%
- P258 STORM SEWER, CL.A, R.G., 600 19.782m AT 1.0%
- P259 STORM SEWER, CL.A, R.G., 600 1.161m AT 1.0%
- P260 STORM SEWER, CL.A, R.G., 1350 43.655m AT 0.65%
- P425 STORM SEWER, CL.A, R.G., 300 7.669m AT 4.0%
- P426 STORM SEWER, CL.A, R.G., 300 13.443m AT 1.0%
- P427 STORM SEWER, CL.A, R.G., 300 7.553m AT 1.0%
- P428 STORM SEWER, CL.A, R.G., 300 7.364m AT 2.0%
- P429 STORM SEWER, CL.A, R.G., 300 7.959m AT 2.0%
- P431 STORM SEWER, CL.A, R.G., 300 7.647m AT 2.0%
- P432 STORM SEWER, CL.A, R.G., 300 7.712m AT 2.0%

- 430 FLARED END SECTION, 300 STA. 1+064.545, 13.738m LT. INV. 198.468
- 431 INLET TY. A, TY. 3V F&G STA. 1+020, 4.067m RT. GRATE 200.406 INV. 199.517
- 432 INLET TY. B, TY. 3V F&G STA. 1+020, 4.217m LT. GRATE 200.406 INV. (E) 199.351 INV. (W) 198.667
- 433 FLARED END SECTION, 300 STA. 1+012.777, 11.061m LT. INV. 198.468



- 38 CONNECT TO EXIST. INLET STA. 19+990, 20m RT. GRATE 201.389 INV. 199.252 (TO BE VERIFIED IN FIELD)
- 247 INLET TY. B, TY. 8 GRATE STA. 19+886.5, 13.475m RT. GRATE 200.891 INV. 199.837
- 248 INLET TY. B, TY. 3V F&G STA. 19+886.5, 10.217m RT. GRATE 201.487 INV. 199.804
- 249 INLET TY. A, TY. 8 GRATE STA. 19+886, 15.919m LT. GRATE 200.800 INV. 200.140
- 250 INLET TY. B, TY. 3V F&G STA. 19+866.5, 10.217m LT. GRATE 201.517 INV. 199.600
- 251 MH. TY. A, 2.1m DIA., TY. 1 FRAME, CL. LID STA. 19+886.5, 13.05m LT. GRATE 201.348 INV. (N,S) 199.119 INV. (W) 200.081 INV. (E) 199.543
- 252 INLET TY. B, TY. 8 GRATE STA. 19+938, 17.590m RT. GRATE 200.632 INV. 199.578
- 253 INLET TY. B, TY. 3V F&G STA. 19+938, 10.217m RT. GRATE 201.242 INV. 199.504
- 254 INLET TY. B, TY. 3V F&G STA. 19+938, 10.217m LT. GRATE 201.257 INV. 199.300
- 255 MH. TY. A, 2.1m DIA., TY. 1 FRAME, CL. LID STA. 19+938, 13m LT. GRATE 201.104 INV. (N,S) 198.872 INV. (E) 199.244
- 256 FLARED END SECTION STA. 19+960, 17.930m RT. INV. 199.829
- 257 MH. TY. A, 1.2m DIA., TY. 3V F&G STA. 19+960, 10.367m RT. GRATE 201.137 INV. 199.754
- 258 MH. TY. A, 1.2m DIA., TY. 1 FRAME, CL. LID STA. 19+990, 10.367m LT. GRATE 201.028 INV. 198.997
- 259 MH. TY. A, 1.2m DIA., TY. 1 FRAME, CL. LID STA. 19+990, 10.367m RT. GRATE 201.028 INV. 198.997
- 260 MH. TY. A, 2.1m DIA., TY. 1 FRAME, CL. LID STA. 19+990, 13m LT. GRATE 201.076 INV. (N,S) 198.622 INV. (E) 198.970
- 426 INLET TY. B, TY. 8 GRATE STA. 1+082.61, 12.585m RT. GRATE 199.905 INV. 199.062
- 428 INLET TY. B, TY. 3V F&G STA. 1+061.677, 4.231m RT. GRATE 200.010 INV. 198.836
- 429 INLET TY. B, TY. 3V F&G STA. 1+083.641, 4.343m RT. GRATE 200.893 INV. 199.394
- 427 INLET TY. B, TY. 8 GRATE STA. 1+069.025, 8.244m RT. GRATE 199.868 INV. 198.920
- 429 INLET TY. B, TY. 3V F&G STA. 1+061.677, 3.952m LT. GRATE 200.010 INV. 198.672



FILE: 415s4m47_12.dgn PLOTTED: 8/11/2011

HMG JOB NO. 5122