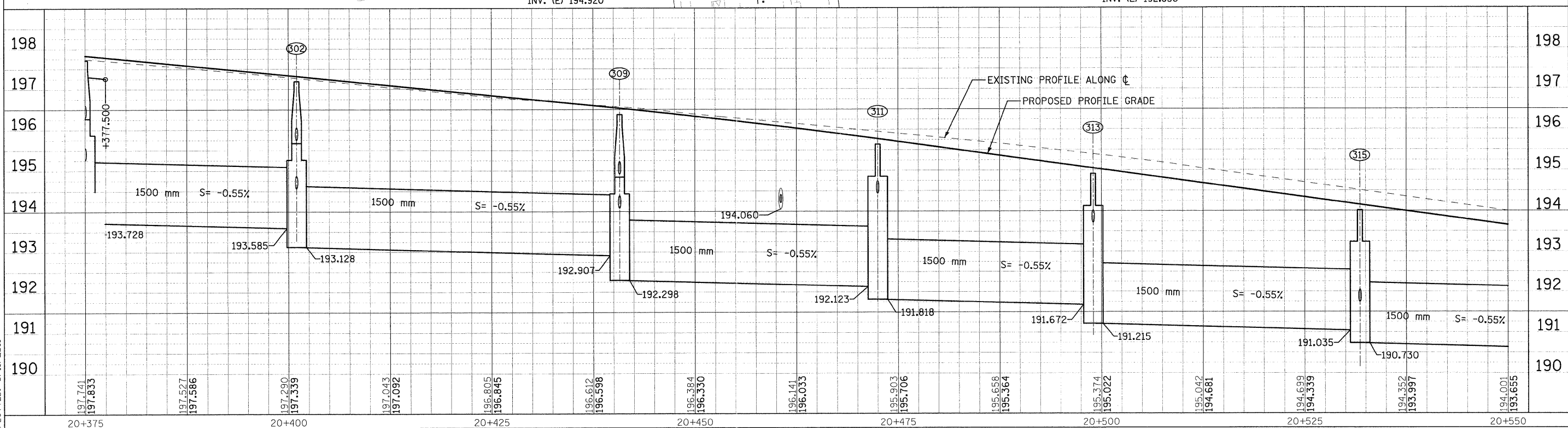
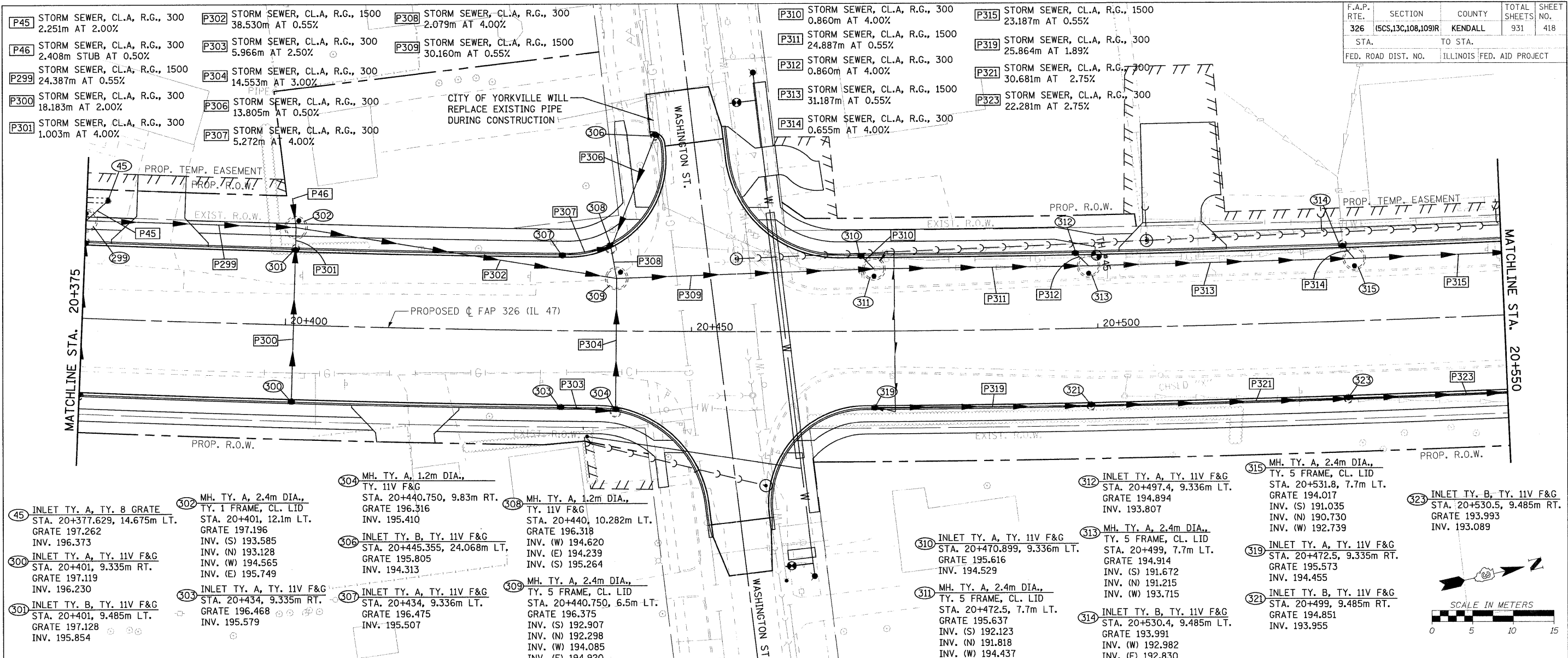


F.A.P. RTE.	SECTION	COUNTY	TOTAL SHEETS	SHEET NO.
326	(5CS,13C,108,109)R	KENDALL	931	418
STA.	TO STA.			
FED. ROAD DIST. NO.	ILLINOIS FED. AID PROJECT			



FILE: 418sm47\_15.dgn  
PLOTTED: 8/11/2011

Sheet: 15  
Angle: 71.2751  
Color: P\_11.47

HMG JOB NO. 5122