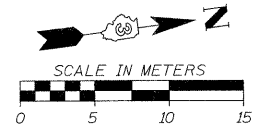


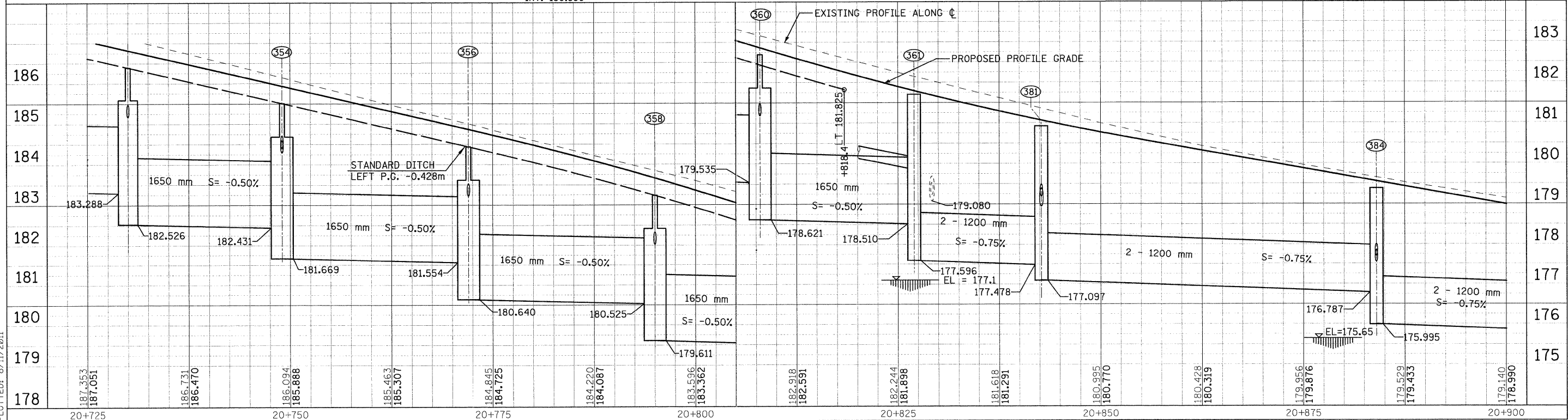
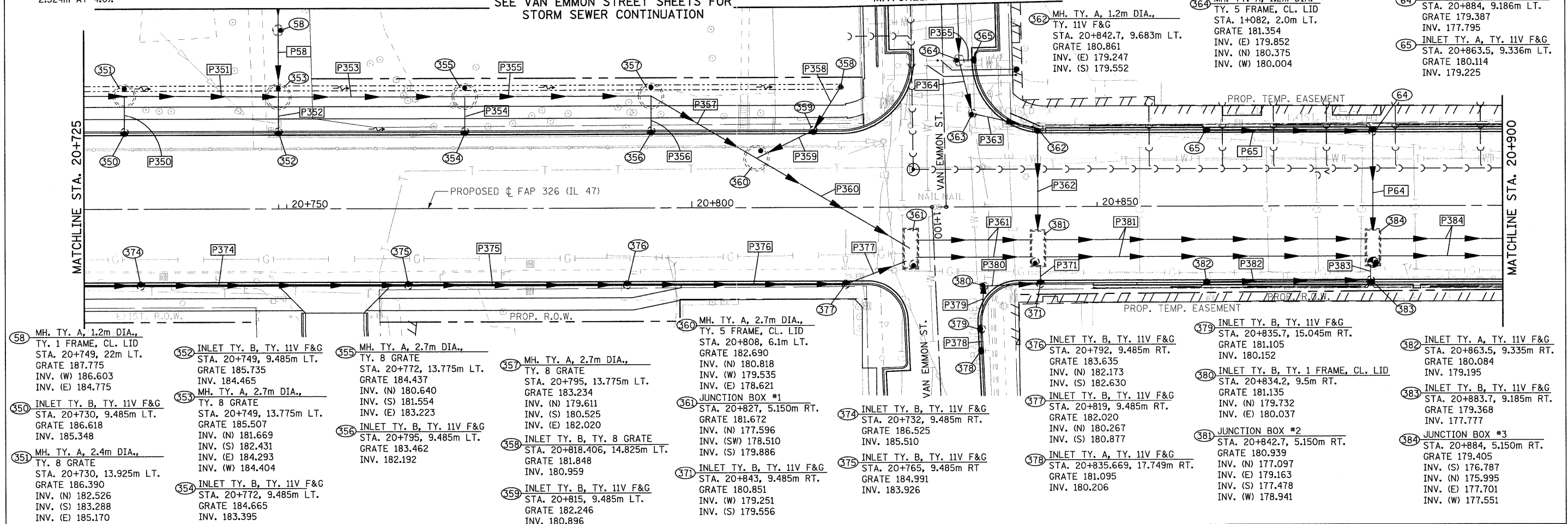
- P58 STORM SEWER, CL.A, R.G., 300 6.294m AT 0.45%
- P64 STORM SEWER, CL.A, R.G., 300 11.829m AT 2.00%
- P65 STORM SEWER, CL.A, R.G., 300 19.864m AT 4.00%
- P350 STORM SEWER, CL.A, R.G., 300 2.828m AT 4.0%
- P351 STORM SEWER, CL.A, R.G., 1650 17.373m AT 0.50%
- P352 STORM SEWER, CL.A, R.G., 300 2.524m AT 4.0%
- P353 STORM SEWER, CL.A, R.G., 1650 21.130m AT 0.50%
- P354 STORM SEWER, CL.A, R.G., 300 2.524m AT 4.00%
- P355 STORM SEWER, CL.A, R.G., 1650 21.130m AT 0.50%
- P356 STORM SEWER, CL.A, R.G., 300 2.524m AT 4.00%
- P357 STORM SEWER, CL.A, R.G., 1650 13.226m AT 0.50%
- P358 STORM SEWER, CL.A, R.G., 300 5.515m AT 1.00%

- P359 STORM SEWER, CL.A, R.G., 300 8.115m AT 1.00%
- P360 STORM SEWER, CL.A, R.G., 1650 21.918m AT 0.50%
- P361 STORM SEWER, CL.A, R.G., 1200 2 - 14.399m AT 0.75%
- P362 STORM SEWER, CL.A, R.G., 450 12.497m AT 2.50%
- P363 STORM SEWER, CL.A, R.G., 450 7.365m AT 2.00%
- P364 STORM SEWER, CL.A, R.G., 450 5.854m AT 2.00%
- P365 STORM SEWER, CL.A, R.G., 300 0.851m AT 2.00%
- P371 STORM SEWER, CL.A, R.G., 300 1.829m AT 4.00%
- P374 STORM SEWER, CL.A, R.G., 300 32.181m AT 4.80%
- P375 STORM SEWER, CL.A, R.G., 300 26.181m AT 4.80%

- P376 STORM SEWER, CL.A, R.G., 300 26.181m AT 4.80%
- P377 STORM SEWER, CL.A, R.G., 300 7.553m AT 4.80%
- P378 STORM SEWER, CL.A, R.G., 300 2.067m AT 2.00%
- P379 STORM SEWER, CL.A, R.G., 300 4.925m AT 2.00%
- P380 STORM SEWER, CL.A, R.G., 300 7.981m AT 2.00%
- P381 STORM SEWER, CL.A, R.G., 1200 2 - 39.999m AT 0.75%
- P382 STORM SEWER, CL.A, R.G., 300 19.564m AT 4.00%
- P383 STORM SEWER, CL.A, R.G., 300 1.530m AT 4.00%
- P384 STORM SEWER, CL.A, R.G., 1200 2 - 36.000m AT 0.75%



F.A.P. RTE.	SECTION	COUNTY	TOTAL SHEETS NO.	SHEET NO.
326	(SCS,13C,108,109)R	KENDALL	931	420
STA.	TO STA.			
FED. ROAD DIST. NO.	ILLINOIS FED. AID PROJECT			



FILE: 4206tm47.17.dgn PLOTTED: 8/11/2011