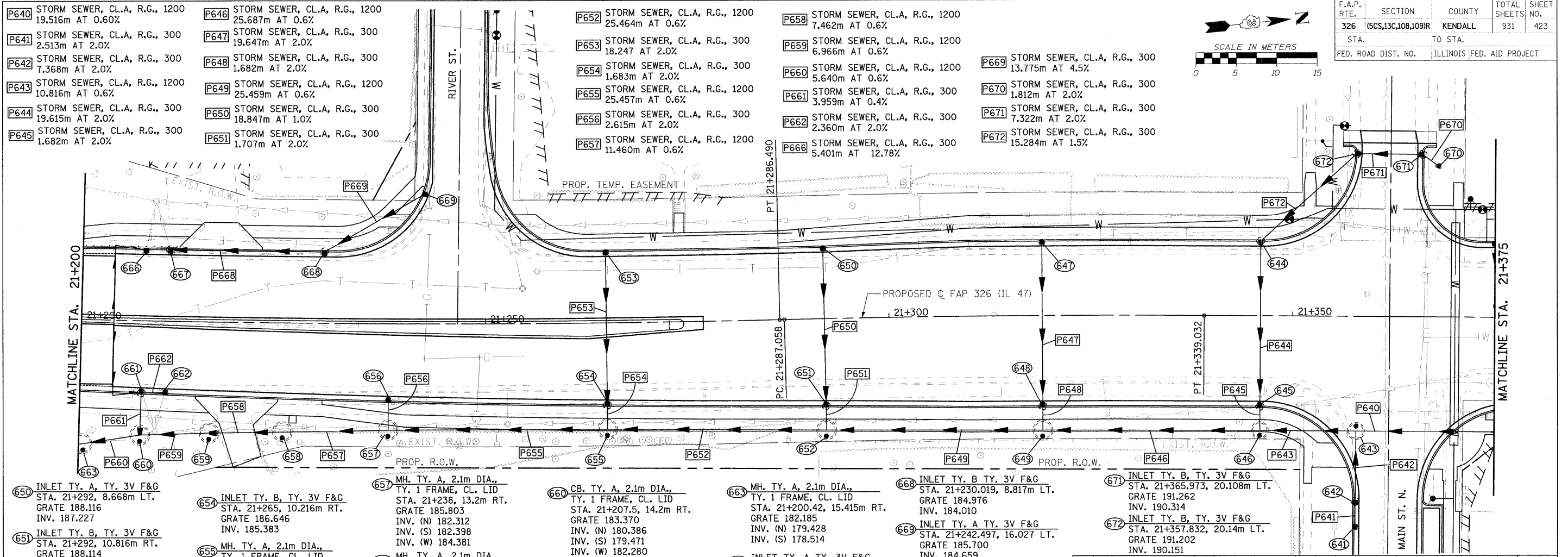
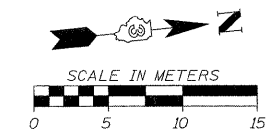
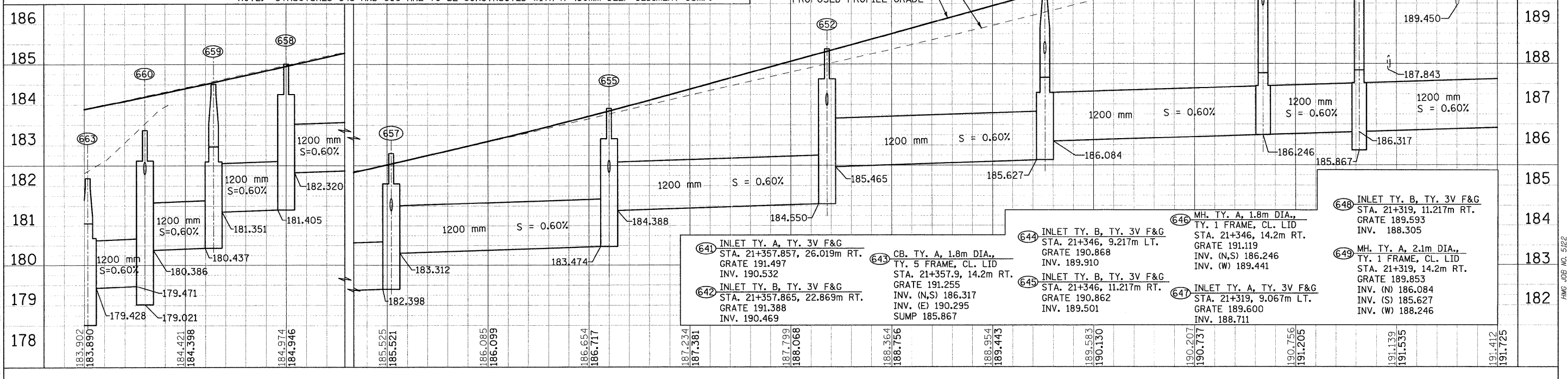


| F.A.P. RTE. | SECTION | COUNTY | TOTAL SHEETS | SHEET NO. |
|---------------------|--------------------|---------------------------|--------------|-----------|
| 326 | (SCS,13C,108,109R) | KENDALL | 931 | 423 |
| STA. | | TO STA. | | |
| FED. ROAD DIST. NO. | | ILLINOIS FED. AID PROJECT | | |



- P640** STORM SEWER, CL.A, R.G., 1200 19.516m AT 0.60%
- P641** STORM SEWER, CL.A, R.G., 300 2.513m AT 2.0%
- P642** STORM SEWER, CL.A, R.G., 300 7.368m AT 2.0%
- P643** STORM SEWER, CL.A, R.G., 1200 10.816m AT 0.6%
- P644** STORM SEWER, CL.A, R.G., 300 19.615m AT 2.0%
- P645** STORM SEWER, CL.A, R.G., 300 1.682m AT 2.0%
- P646** STORM SEWER, CL.A, R.G., 1200 25.687m AT 0.6%
- P647** STORM SEWER, CL.A, R.G., 300 19.647m AT 2.0%
- P648** STORM SEWER, CL.A, R.G., 300 1.682m AT 2.0%
- P649** STORM SEWER, CL.A, R.G., 1200 25.459m AT 0.6%
- P650** STORM SEWER, CL.A, R.G., 300 18.847m AT 1.0%
- P651** STORM SEWER, CL.A, R.G., 300 1.707m AT 2.0%
- P652** STORM SEWER, CL.A, R.G., 1200 25.464m AT 0.6%
- P653** STORM SEWER, CL.A, R.G., 300 18.247 AT 2.0%
- P654** STORM SEWER, CL.A, R.G., 300 1.683m AT 2.0%
- P655** STORM SEWER, CL.A, R.G., 1200 25.457m AT 0.6%
- P656** STORM SEWER, CL.A, R.G., 300 2.615m AT 2.0%
- P657** STORM SEWER, CL.A, R.G., 1200 11.460m AT 0.6%
- P658** STORM SEWER, CL.A, R.G., 1200 7.462m AT 0.6%
- P659** STORM SEWER, CL.A, R.G., 1200 6.966m AT 0.6%
- P660** STORM SEWER, CL.A, R.G., 1200 5.640m AT 0.6%
- P661** STORM SEWER, CL.A, R.G., 300 3.959m AT 0.4%
- P662** STORM SEWER, CL.A, R.G., 300 2.360m AT 2.0%
- P666** STORM SEWER, CL.A, R.G., 300 5.401m AT 12.78%
- P669** STORM SEWER, CL.A, R.G., 300 13.775m AT 4.5%
- P670** STORM SEWER, CL.A, R.G., 300 1.812m AT 2.0%
- P671** STORM SEWER, CL.A, R.G., 300 7.322m AT 2.0%
- P672** STORM SEWER, CL.A, R.G., 300 15.284m AT 1.5%



FILE: 423stn47_20.dgn PLOTTED: 8/11/2011

Sheet: 20 Angle: 84.321 Chair: P1147

HMG JOB NO. 5122