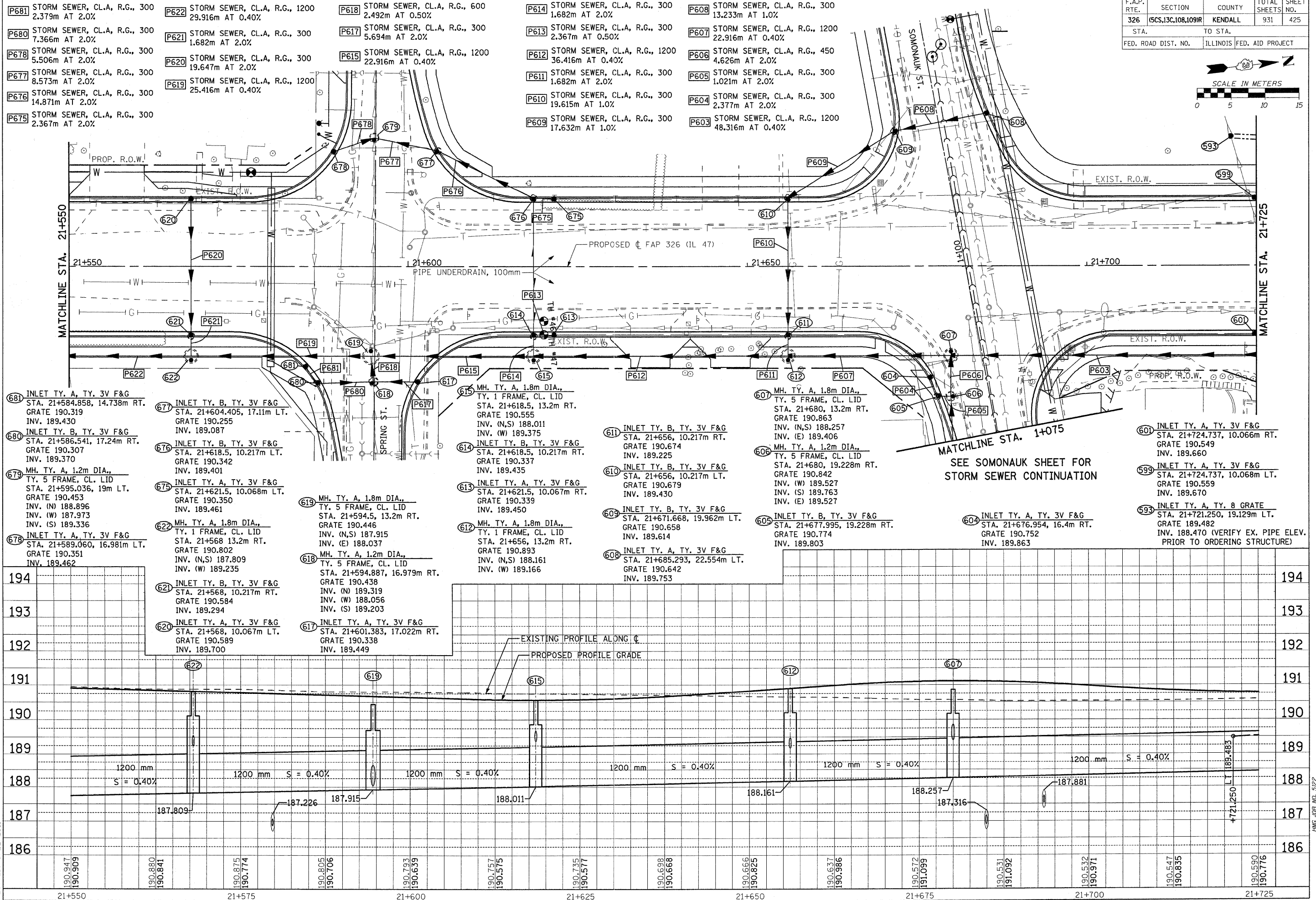
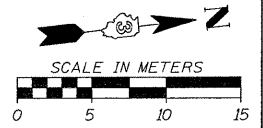
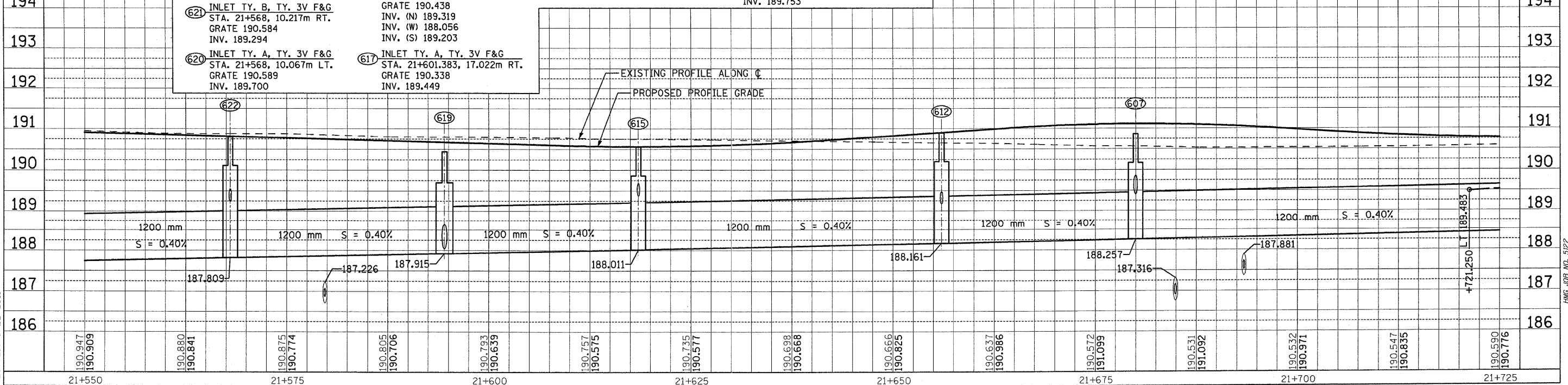


F.A.P. RTE.	SECTION	COUNTY	TOTAL SHEETS	SHEET NO.
326	(5CS,13C,108,109R)	KENDALL	931	425
STA.		TO STA.		
FED. ROAD DIST. NO.		ILLINOIS FED. AID PROJECT		



- P622** STORM SEWER, CL.A, R.G., 1200 29.916m AT 0.40%
- P621** STORM SEWER, CL.A, R.G., 300 1.682m AT 2.0%
- P620** STORM SEWER, CL.A, R.G., 300 19.647m AT 2.0%
- P619** STORM SEWER, CL.A, R.G., 1200 25.416m AT 0.40%
- P618** STORM SEWER, CL.A, R.G., 600 2.492m AT 0.50%
- P617** STORM SEWER, CL.A, R.G., 300 5.694m AT 2.0%
- P615** STORM SEWER, CL.A, R.G., 1200 22.916m AT 0.40%
- P614** STORM SEWER, CL.A, R.G., 300 1.682m AT 2.0%
- P613** STORM SEWER, CL.A, R.G., 300 2.367m AT 0.50%
- P612** STORM SEWER, CL.A, R.G., 1200 36.416m AT 0.40%
- P611** STORM SEWER, CL.A, R.G., 300 1.682m AT 2.0%
- P610** STORM SEWER, CL.A, R.G., 300 19.615m AT 1.0%
- P609** STORM SEWER, CL.A, R.G., 300 17.632m AT 1.0%
- P608** STORM SEWER, CL.A, R.G., 300 13.233m AT 1.0%
- P607** STORM SEWER, CL.A, R.G., 1200 22.916m AT 0.40%
- P606** STORM SEWER, CL.A, R.G., 450 4.626m AT 2.0%
- P605** STORM SEWER, CL.A, R.G., 300 1.021m AT 2.0%
- P604** STORM SEWER, CL.A, R.G., 300 2.377m AT 2.0%
- P603** STORM SEWER, CL.A, R.G., 1200 48.316m AT 0.40%



Sheet: 22  
 Angle: 83.9071  
 Chain: P-IL47

FILE: 425stm47\_22.dgn  
 PLOTTED: 8/22/2011

HMG JOB NO. 5122