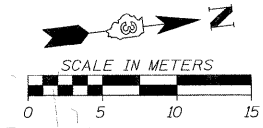
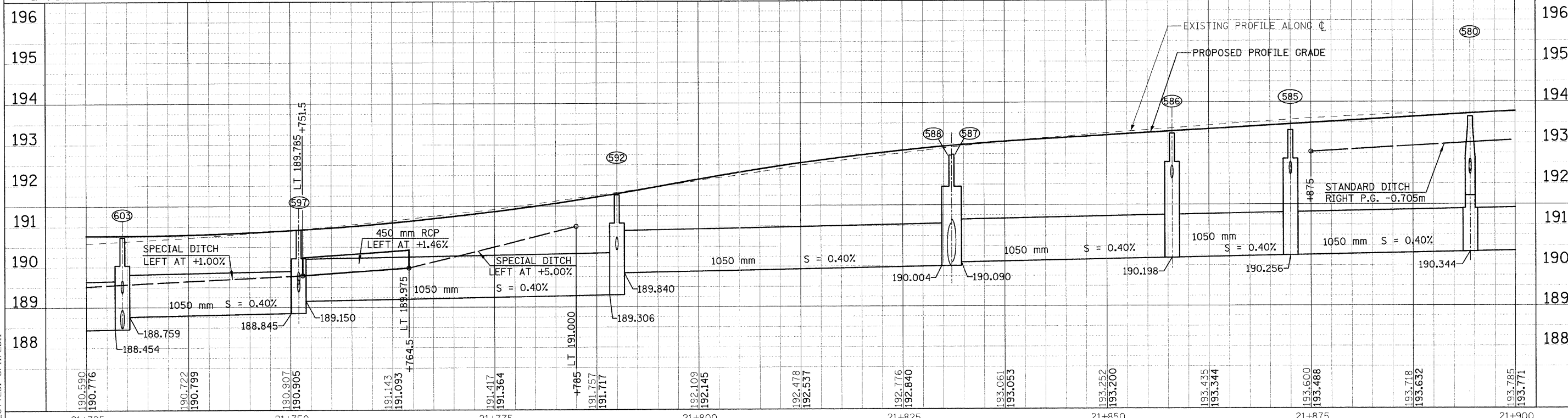
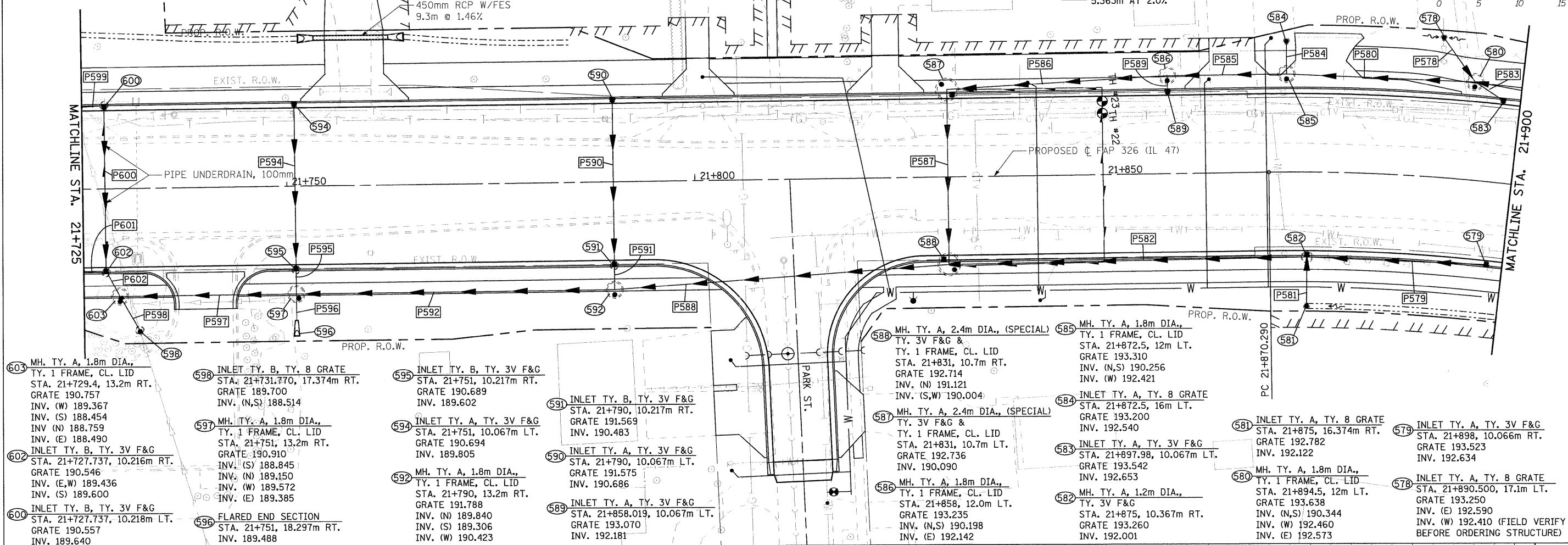


F.A.P. RTE.	SECTION	COUNTY	TOTAL SHEETS NO.	SHEET NO.
326	(5CS,13C,108,109R)	KENDALL	931	426
STA.	TO STA.			
FED. ROAD DIST. NO.	ILLINOIS FED. AID PROJECT			



- P602 STORM SEWER, CL.A, R.G., 300 2.115m AT 2.0%
- P601 STORM SEWER, CL.A, R.G., 300 2.367m AT 2.0%
- P600 STORM SEWER, CL.A, R.G., 300 19.615m AT 1.0%
- P599 STORM SEWER, CL.A, R.G., 300 2.367m AT 1.0%
- P598 STORM SEWER, CL.A, R.G., 450 3.582m AT 1.5%
- P597 STORM SEWER, CL.A, R.G., 1050 20.309m AT 0.40%
- P596 STORM SEWER, CL.A, R.G., 300 4.205m AT 1.0%
- P595 STORM SEWER, CL.A, R.G., 300 1.682m AT 1.0%
- P594 STORM SEWER, CL.A, R.G., 300 19.647m AT 1.0%
- P592 STORM SEWER, CL.A, R.G., 1050 37.709m AT 0.4%
- P591 STORM SEWER, CL.A, R.G., 300 1.682m AT 2.0%
- P590 STORM SEWER, CL.A, R.G., 300 19.647m AT 1.0%
- P589 STORM SEWER, CL.A, R.G., 300 0.814m AT 2.0%
- P588 STORM SEWER, CL.A, R.G., 1050 39.398m AT 0.40%
- P587 STORM SEWER, CL.A, R.G., 1050 19.334m AT 0.40%
- P586 STORM SEWER, CL.A, R.G., 1050 25.353m AT 0.40%
- P585 STORM SEWER, CL.A, R.G., 1050 13.209m AT 0.40%
- P584 STORM SEWER, CL.A, R.G., 300 2.881m AT 2.97%
- P583 STORM SEWER, CL.A, R.G., 300 2.862m AT 2.0%
- P582 STORM SEWER, CL.A, R.G., 300 42.224m AT 2.0%
- P581 STORM SEWER, CL.A, R.G., 300 5.205m AT 2.0%
- P580 STORM SEWER, CL.A, R.G., 1050 20.709m AT 0.40%
- P579 STORM SEWER, CL.A, R.G., 300 22.200m AT 2.0%
- P578 STORM SEWER, CL.A, R.G., 300 5.363m AT 2.0%



FILE: 426stm47-23.dgn  
PLOTTED: 8/11/2011

Sheet 23  
Auger 5/1/2011  
C:\p1147

HMG JOB NO. 5122