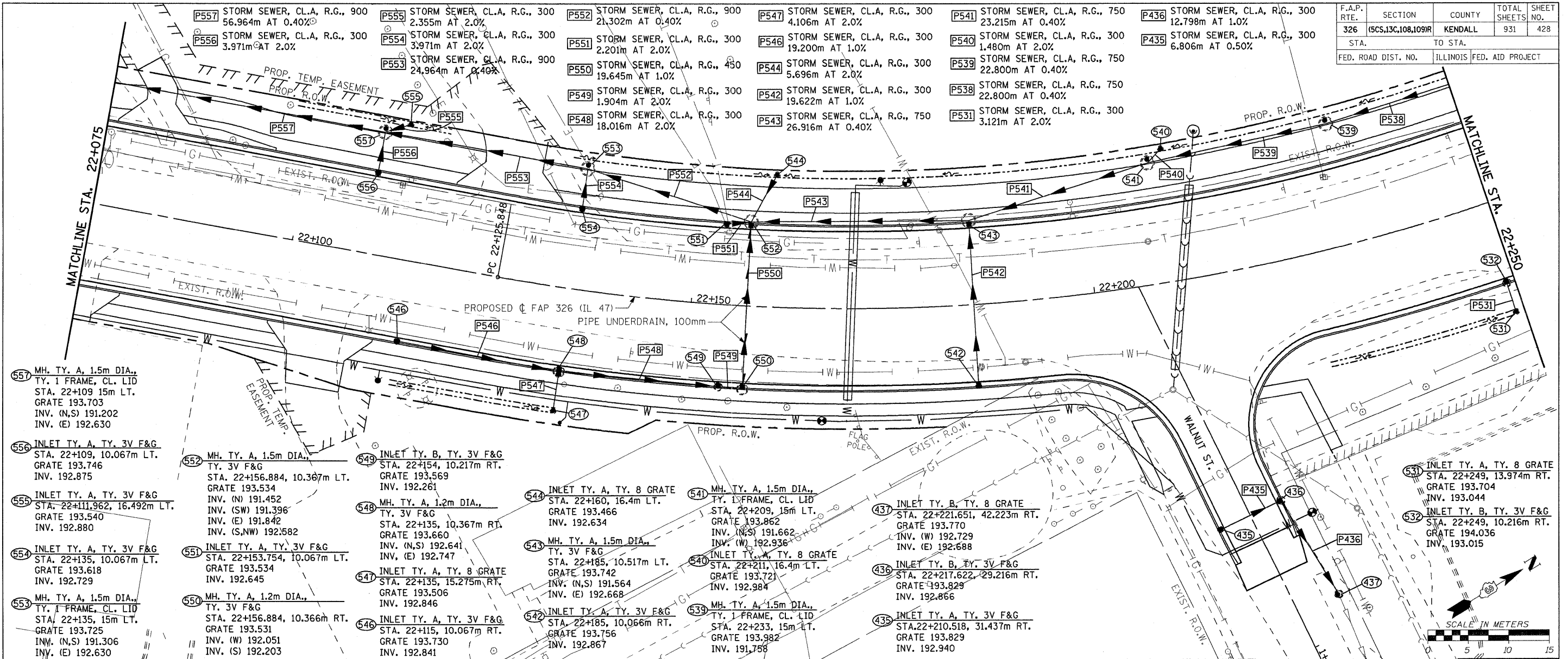
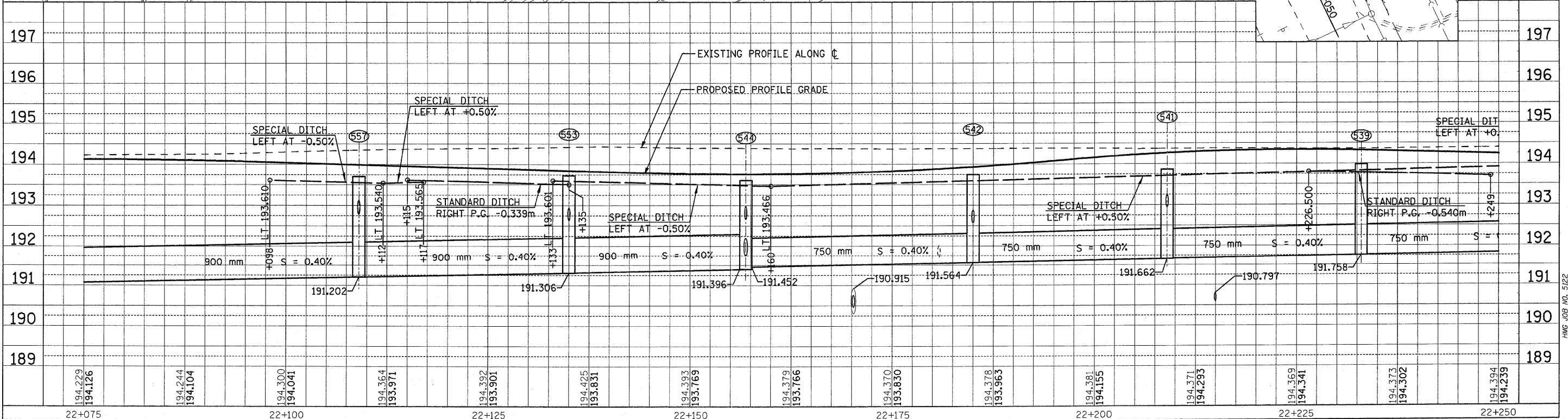


F.A.P. RTE.	SECTION	COUNTY	TOTAL SHEETS	SHEET NO.
326	(SCS,13C,108,109)R	KENDALL	931	428
STA.	TO STA.			
FED. ROAD DIST. NO.	ILLINOIS FED. AID PROJECT			



- 557 MH. TY. A, 1.5m DIA., TY. 1 FRAME, CL. LID STA. 22+109 15m LT. GRATE 193.703 INV. (N,S) 191.202 INV. (E) 192.630
- 556 INLET TY. A, TY. 3V F&G STA. 22+109, 10.067m LT. GRATE 193.746 INV. 192.875
- 555 INLET TY. A, TY. 3V F&G STA. 22+111.962, 16.492m LT. GRATE 193.540 INV. 192.880
- 554 INLET TY. A, TY. 3V F&G STA. 22+135, 10.067m LT. GRATE 193.618 INV. 192.729
- 553 MH. TY. A, 1.5m DIA., TY. 1 FRAME, CL. LID STA. 22+135, 15m LT. GRATE 193.725 INV. (N,S) 191.306 INV. (E) 192.630
- 552 MH. TY. A, 1.5m DIA., TY. 3V F&G STA. 22+156.884, 10.367m LT. GRATE 193.534 INV. (N) 191.452 INV. (SW) 191.396 INV. (E) 191.842 INV. (S,NW) 192.582
- 551 INLET TY. A, TY. 3V F&G STA. 22+153.754, 10.067m LT. GRATE 193.534 INV. 192.645
- 550 MH. TY. A, 1.2m DIA., TY. 3V F&G STA. 22+156.884, 10.366m RT. GRATE 193.531 INV. (W) 192.051 INV. (S) 192.203
- 549 INLET TY. B, TY. 3V F&G STA. 22+154, 10.217m RT. GRATE 193.569 INV. 192.261
- 548 MH. TY. A, 1.2m DIA., TY. 3V F&G STA. 22+135, 10.367m RT. GRATE 193.660 INV. (N,S) 192.641 INV. (E) 192.747
- 547 INLET TY. A, TY. 8 GRATE STA. 22+135, 15.275m RT. GRATE 193.506 INV. 192.846
- 546 INLET TY. A, TY. 3V F&G STA. 22+115, 10.067m RT. GRATE 193.730 INV. 192.841
- 545 STORM SEWER, CL.A, R.G., 300 2.355m AT 2.0%
- 544 STORM SEWER, CL.A, R.G., 300 21.302m AT 0.40%
- 543 STORM SEWER, CL.A, R.G., 300 19.200m AT 1.0%
- 542 STORM SEWER, CL.A, R.G., 300 19.622m AT 1.0%
- 541 STORM SEWER, CL.A, R.G., 750 4.106m AT 2.0%
- 540 STORM SEWER, CL.A, R.G., 300 19.200m AT 1.0%
- 539 STORM SEWER, CL.A, R.G., 750 22.800m AT 0.40%
- 538 STORM SEWER, CL.A, R.G., 750 22.800m AT 0.40%
- 537 STORM SEWER, CL.A, R.G., 300 24.964m AT 0.40%
- 536 STORM SEWER, CL.A, R.G., 300 3.971m AT 2.0%
- 535 STORM SEWER, CL.A, R.G., 300 2.201m AT 2.0%
- 534 STORM SEWER, CL.A, R.G., 300 19.645m AT 1.0%
- 533 STORM SEWER, CL.A, R.G., 450 19.645m AT 1.0%
- 532 STORM SEWER, CL.A, R.G., 300 5.696m AT 2.0%
- 531 STORM SEWER, CL.A, R.G., 300 18.016m AT 2.0%
- 530 STORM SEWER, CL.A, R.G., 750 26.916m AT 0.40%
- 529 STORM SEWER, CL.A, R.G., 300 19.200m AT 1.0%
- 528 STORM SEWER, CL.A, R.G., 750 23.215m AT 0.40%
- 527 STORM SEWER, CL.A, R.G., 300 12.798m AT 1.0%
- 526 STORM SEWER, CL.A, R.G., 300 6.806m AT 0.50%
- 525 STORM SEWER, CL.A, R.G., 300 1.480m AT 2.0%
- 524 STORM SEWER, CL.A, R.G., 750 22.800m AT 0.40%
- 523 STORM SEWER, CL.A, R.G., 750 3.121m AT 2.0%
- 522 STORM SEWER, CL.A, R.G., 750 22.800m AT 0.40%
- 521 STORM SEWER, CL.A, R.G., 300 3.121m AT 2.0%
- 520 STORM SEWER, CL.A, R.G., 300 2.355m AT 2.0%
- 519 STORM SEWER, CL.A, R.G., 300 2.355m AT 2.0%
- 518 STORM SEWER, CL.A, R.G., 300 2.355m AT 2.0%
- 517 STORM SEWER, CL.A, R.G., 300 2.355m AT 2.0%
- 516 STORM SEWER, CL.A, R.G., 300 2.355m AT 2.0%
- 515 STORM SEWER, CL.A, R.G., 300 2.355m AT 2.0%
- 514 STORM SEWER, CL.A, R.G., 300 2.355m AT 2.0%
- 513 STORM SEWER, CL.A, R.G., 300 2.355m AT 2.0%
- 512 STORM SEWER, CL.A, R.G., 300 2.355m AT 2.0%
- 511 STORM SEWER, CL.A, R.G., 300 2.355m AT 2.0%
- 510 STORM SEWER, CL.A, R.G., 300 2.355m AT 2.0%
- 509 STORM SEWER, CL.A, R.G., 300 2.355m AT 2.0%
- 508 STORM SEWER, CL.A, R.G., 300 2.355m AT 2.0%
- 507 STORM SEWER, CL.A, R.G., 300 2.355m AT 2.0%
- 506 STORM SEWER, CL.A, R.G., 300 2.355m AT 2.0%
- 505 STORM SEWER, CL.A, R.G., 300 2.355m AT 2.0%
- 504 STORM SEWER, CL.A, R.G., 300 2.355m AT 2.0%
- 503 STORM SEWER, CL.A, R.G., 300 2.355m AT 2.0%
- 502 STORM SEWER, CL.A, R.G., 300 2.355m AT 2.0%
- 501 STORM SEWER, CL.A, R.G., 300 2.355m AT 2.0%
- 500 STORM SEWER, CL.A, R.G., 300 2.355m AT 2.0%
- 499 STORM SEWER, CL.A, R.G., 300 2.355m AT 2.0%
- 498 STORM SEWER, CL.A, R.G., 300 2.355m AT 2.0%
- 497 STORM SEWER, CL.A, R.G., 300 2.355m AT 2.0%
- 496 STORM SEWER, CL.A, R.G., 300 2.355m AT 2.0%
- 495 STORM SEWER, CL.A, R.G., 300 2.355m AT 2.0%
- 494 STORM SEWER, CL.A, R.G., 300 2.355m AT 2.0%
- 493 STORM SEWER, CL.A, R.G., 300 2.355m AT 2.0%
- 492 STORM SEWER, CL.A, R.G., 300 2.355m AT 2.0%
- 491 STORM SEWER, CL.A, R.G., 300 2.355m AT 2.0%
- 490 STORM SEWER, CL.A, R.G., 300 2.355m AT 2.0%
- 489 STORM SEWER, CL.A, R.G., 300 2.355m AT 2.0%
- 488 STORM SEWER, CL.A, R.G., 300 2.355m AT 2.0%
- 487 STORM SEWER, CL.A, R.G., 300 2.355m AT 2.0%
- 486 STORM SEWER, CL.A, R.G., 300 2.355m AT 2.0%
- 485 STORM SEWER, CL.A, R.G., 300 2.355m AT 2.0%
- 484 STORM SEWER, CL.A, R.G., 300 2.355m AT 2.0%
- 483 STORM SEWER, CL.A, R.G., 300 2.355m AT 2.0%
- 482 STORM SEWER, CL.A, R.G., 300 2.355m AT 2.0%
- 481 STORM SEWER, CL.A, R.G., 300 2.355m AT 2.0%
- 480 STORM SEWER, CL.A, R.G., 300 2.355m AT 2.0%
- 479 STORM SEWER, CL.A, R.G., 300 2.355m AT 2.0%
- 478 STORM SEWER, CL.A, R.G., 300 2.355m AT 2.0%
- 477 STORM SEWER, CL.A, R.G., 300 2.355m AT 2.0%
- 476 STORM SEWER, CL.A, R.G., 300 2.355m AT 2.0%
- 475 STORM SEWER, CL.A, R.G., 300 2.355m AT 2.0%
- 474 STORM SEWER, CL.A, R.G., 300 2.355m AT 2.0%
- 473 STORM SEWER, CL.A, R.G., 300 2.355m AT 2.0%
- 472 STORM SEWER, CL.A, R.G., 300 2.355m AT 2.0%
- 471 STORM SEWER, CL.A, R.G., 300 2.355m AT 2.0%
- 470 STORM SEWER, CL.A, R.G., 300 2.355m AT 2.0%
- 469 STORM SEWER, CL.A, R.G., 300 2.355m AT 2.0%
- 468 STORM SEWER, CL.A, R.G., 300 2.355m AT 2.0%
- 467 STORM SEWER, CL.A, R.G., 300 2.355m AT 2.0%
- 466 STORM SEWER, CL.A, R.G., 300 2.355m AT 2.0%
- 465 STORM SEWER, CL.A, R.G., 300 2.355m AT 2.0%
- 464 STORM SEWER, CL.A, R.G., 300 2.355m AT 2.0%
- 463 STORM SEWER, CL.A, R.G., 300 2.355m AT 2.0%
- 462 STORM SEWER, CL.A, R.G., 300 2.355m AT 2.0%
- 461 STORM SEWER, CL.A, R.G., 300 2.355m AT 2.0%
- 460 STORM SEWER, CL.A, R.G., 300 2.355m AT 2.0%
- 459 STORM SEWER, CL.A, R.G., 300 2.355m AT 2.0%
- 458 STORM SEWER, CL.A, R.G., 300 2.355m AT 2.0%
- 457 STORM SEWER, CL.A, R.G., 300 2.355m AT 2.0%
- 456 STORM SEWER, CL.A, R.G., 300 2.355m AT 2.0%
- 455 STORM SEWER, CL.A, R.G., 300 2.355m AT 2.0%
- 454 STORM SEWER, CL.A, R.G., 300 2.355m AT 2.0%
- 453 STORM SEWER, CL.A, R.G., 300 2.355m AT 2.0%
- 452 STORM SEWER, CL.A, R.G., 300 2.355m AT 2.0%
- 451 STORM SEWER, CL.A, R.G., 300 2.355m AT 2.0%
- 450 STORM SEWER, CL.A, R.G., 300 2.355m AT 2.0%
- 449 STORM SEWER, CL.A, R.G., 300 2.355m AT 2.0%
- 448 STORM SEWER, CL.A, R.G., 300 2.355m AT 2.0%
- 447 STORM SEWER, CL.A, R.G., 300 2.355m AT 2.0%
- 446 STORM SEWER, CL.A, R.G., 300 2.355m AT 2.0%
- 445 STORM SEWER, CL.A, R.G., 300 2.355m AT 2.0%
- 444 STORM SEWER, CL.A, R.G., 300 2.355m AT 2.0%
- 443 STORM SEWER, CL.A, R.G., 300 2.355m AT 2.0%
- 442 STORM SEWER, CL.A, R.G., 300 2.355m AT 2.0%
- 441 STORM SEWER, CL.A, R.G., 300 2.355m AT 2.0%
- 440 STORM SEWER, CL.A, R.G., 300 2.355m AT 2.0%
- 439 STORM SEWER, CL.A, R.G., 300 2.355m AT 2.0%
- 438 STORM SEWER, CL.A, R.G., 300 2.355m AT 2.0%
- 437 STORM SEWER, CL.A, R.G., 300 2.355m AT 2.0%
- 436 STORM SEWER, CL.A, R.G., 300 2.355m AT 2.0%
- 435 STORM SEWER, CL.A, R.G., 300 2.355m AT 2.0%
- 434 STORM SEWER, CL.A, R.G., 300 2.355m AT 2.0%
- 433 STORM SEWER, CL.A, R.G., 300 2.355m AT 2.0%
- 432 STORM SEWER, CL.A, R.G., 300 2.355m AT 2.0%
- 431 STORM SEWER, CL.A, R.G., 300 2.355m AT 2.0%
- 430 STORM SEWER, CL.A, R.G., 300 2.355m AT 2.0%
- 429 STORM SEWER, CL.A, R.G., 300 2.355m AT 2.0%
- 428 STORM SEWER, CL.A, R.G., 300 2.355m AT 2.0%



Sheet: 25
 Angle: 58.1405
 Chdir: P:\JL47

FILE: 428stm47_25.dgn
 PLOTTED: 8/22/2011