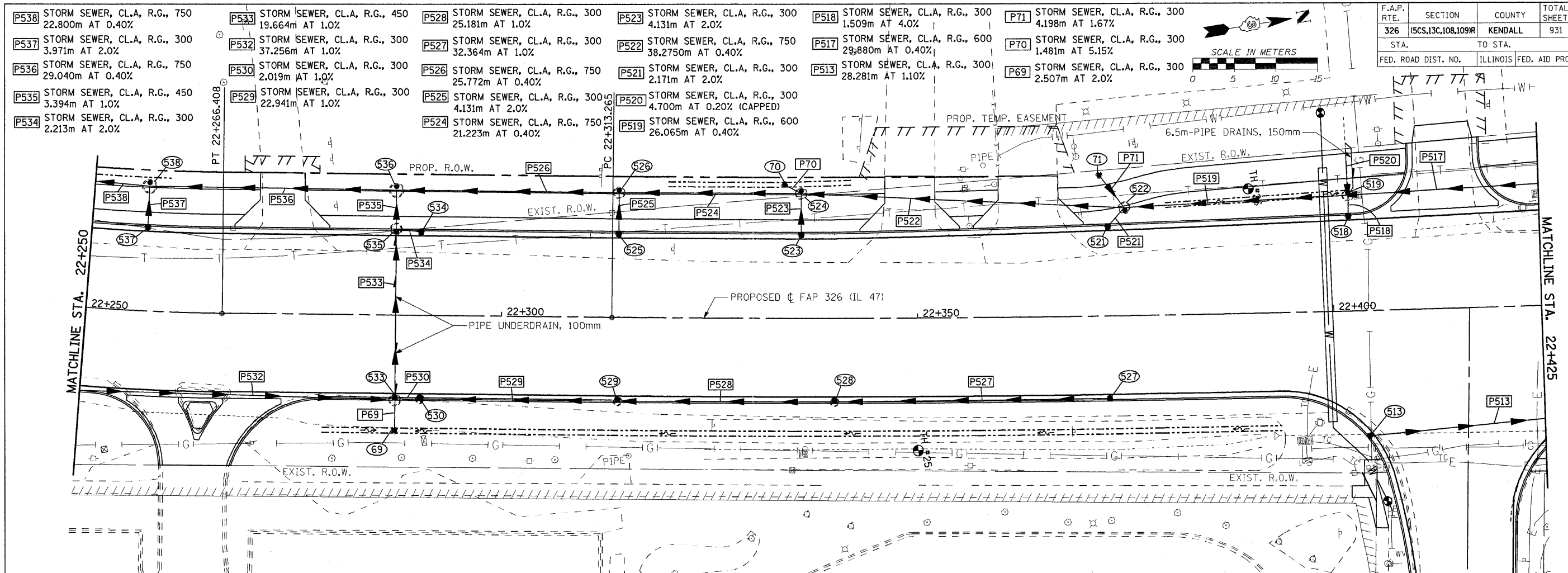
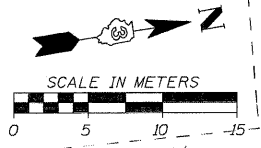
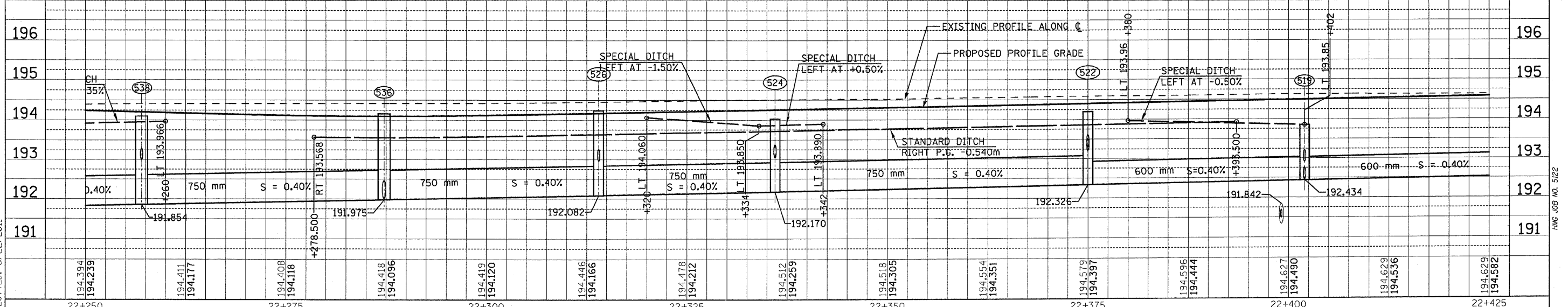


F.A.P. RTE.	SECTION	COUNTY	TOTAL SHEETS	SHEET NO.
326	(SCS,13C,108,109R)	KENDALL	931	429
STA.		TO STA.		
FED. ROAD DIST. NO.		ILLINOIS FED. AID PROJECT		



<p>538 MH. TY. A, 1.5m DIA., TY. 1 FRAME, CL. LID STA. 22+257, 15m LT. GRATE 194.099 INV. (N,S) 191.854 INV. (E) 192.989</p> <p>537 INLET TY. A, TY. 3V F&amp;G STA. 22+257, 10.067m LT. GRATE 193.977 INV. 193.088</p> <p>536 MH. TY. A, 1.5m DIA., TY. 1 FRAME, CL. LID STA. 22+287.240, 15m LT. GRATE 194.163 INV. (N,S) 191.975 INV. (E) 192.009</p>	<p>535 MH. TY. A, 1.2m DIA., TY. 3V F&amp;G STA. 22+287.240, 10.367m LT. GRATE 193.878 INV. (W,E) 192.056 INV. (N) 192.931</p> <p>534 INLET TY. A, TY. 3V F&amp;G STA. 22+290.240, 10.067m LT. GRATE 193.880 INV. 192.991</p> <p>533 MH. TY. A, 1.2m DIA., TY. 3V F&amp;G STA. 22+287.240, 10.366m RT. GRATE 193.868 INV. (W) 192.263 INV. (S) 192.632 INV. (N) 192.415 INV. (E) 192.829</p>	<p>530 INLET TY. B, TY. 3V F&amp;G STA. 22+290.240, 10.216m RT. GRATE 193.870 INV. 192.445</p> <p>529 INLET TY. B, TY. 3V F&amp;G STA. 22+314, 10.216m RT. GRATE 193.944 INV. (S,N) 192.683</p> <p>528 INLET TY. B, TY. 3V F&amp;G STA. 22+340, 10.216m RT. GRATE 194.040 INV. 192.943</p> <p>527 INLET TY. A, TY. 3V F&amp;G STA. 22+373, 10.067m RT. GRATE 194.162 INV. (W) 193.072 INV. (E) 193.273</p>	<p>526 MH. TY. A, 1.2m DIA., TY. 1 FRAME, CL. LID STA. 22+314, 15m LT. GRATE 194.237 INV. (N,S) 192.082 INV. (E) 192.956</p> <p>525 INLET TY. A, TY. 3V F&amp;G STA. 22+314, 10.067m LT. GRATE 193.944 INV. 193.055</p> <p>524 MH. TY. A, 1.2m DIA., TY. 1 FRAME, CL. LID STA. 22+336, 15m LT. GRATE 194.025 INV. (N,S) 192.170 INV. (W) 193.072 INV. (E) 193.038</p>	<p>523 INLET TY. A, TY. 3V F&amp;G STA. 22+336, 10.067m LT. GRATE 194.026 INV. 193.137</p> <p>522 MH. TY. A, 1.2m DIA., TY. 1 FRAME, CL. LID STA. 22+375, 13m LT. GRATE 194.195 INV. (N,S) 192.326 INV. (W) 193.306 INV. (E) 193.204</p> <p>521 INLET TY. A, TY. 3V F&amp;G STA. 22+373, 10.8m LT. GRATE 194.152 INV. 193.263</p>	<p>518 MH. TY. A, 1.2m DIA., TY. 8 GRATE STA. 22+402, 13.938m LT. GRATE 193.850 INV. (N,S) 192.434 INV. (E) 192.907 INV. (W) 192.450</p> <p>517 INLET TY. B, TY. 3V F&amp;G STA. 22+402, 11.445m LT. GRATE 194.246 INV. 193.006</p>	<p>513 INLET TY. A, TY. 3V F&amp;G STA. 22+403.982, 15.82m RT. GRATE 194.076 INV. 193.187</p> <p>71 INLET TY. A, TY. 8 GRATE STA. 22+372, 17m LT. GRATE 194.050 INV. 193.390</p> <p>70 INLET TY. A, TY. 8 GRATE STA. 22+334, 16.1m LT. GRATE 193.850 INV. 193.190</p> <p>69 INLET TY. A, TY. 8 GRATE STA. 22+287.236, 13.675m RT. GRATE 193.556 INV. 192.896</p>
--	--	--	---	---	---	--



Sheet: 26  
 Angle: 81.2490  
 Chdir: P:\1147

FILE: 429s\sm47\_26.dgn  
 PLOTTED: 8/22/2011

HMG JOB NO. 5122