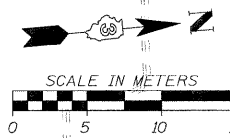
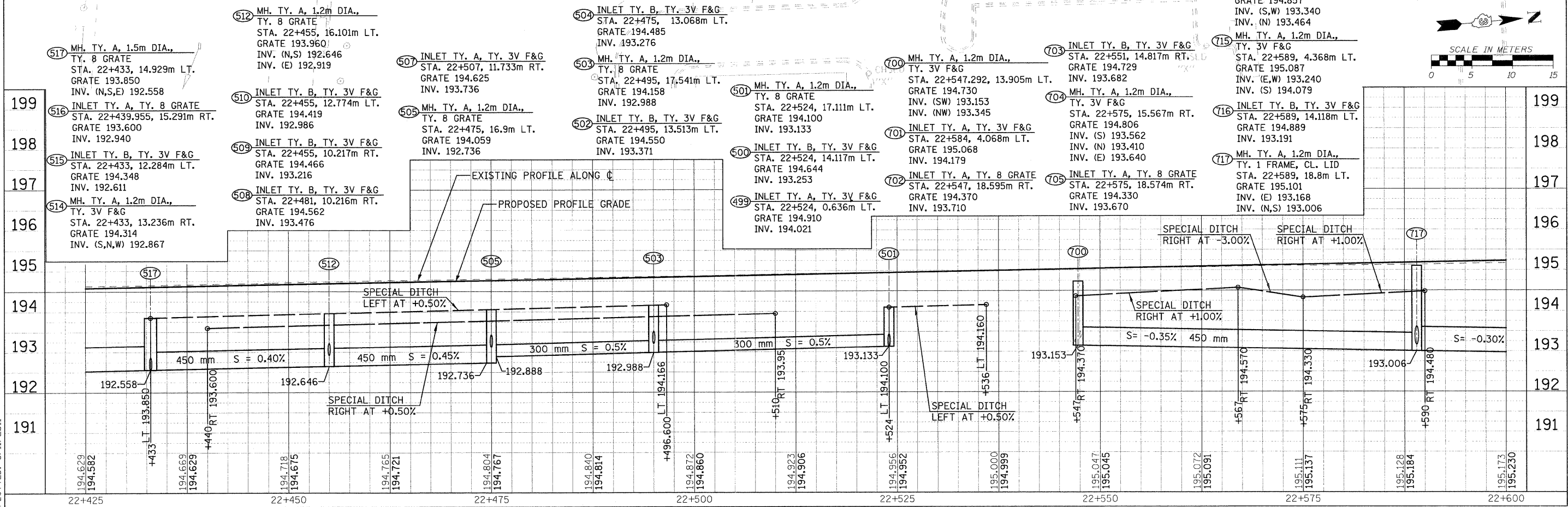
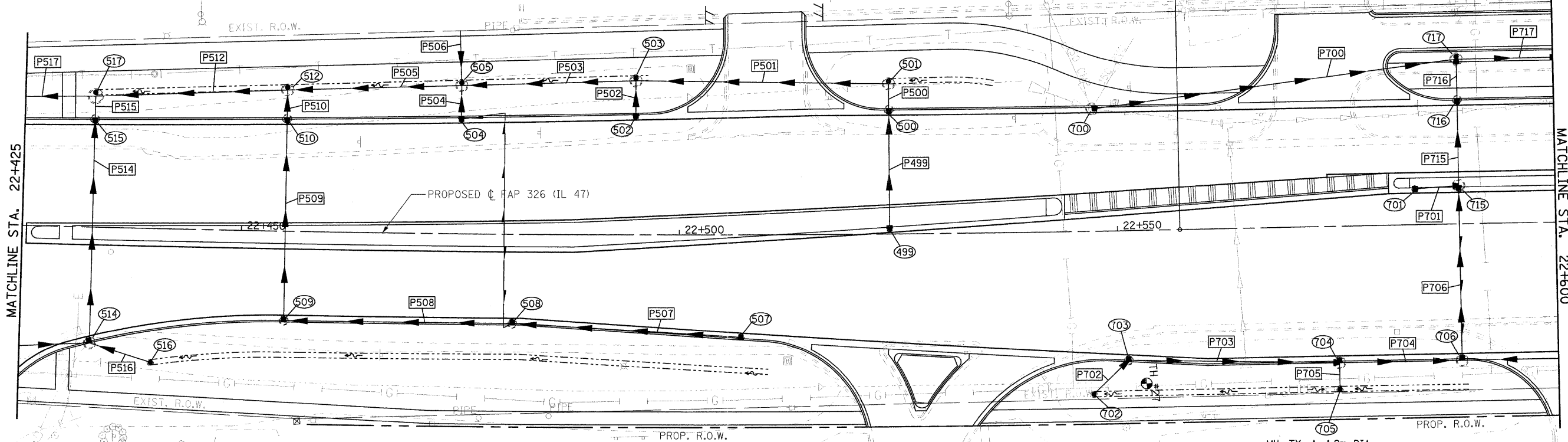


F.A.P. RTE.	SECTION	COUNTY	TOTAL SHEETS	SHEET NO.
326	(SCS,13C,108,109)R	KENDALL	931	430
STA.	TO STA.			
FED. ROAD DIST. NO.			ILLINOIS FED. AID PROJECT	

- P499 STORM SEWER, CL.A, R.G., 300 12.844m AT 0.40%
- P500 STORM SEWER, CL.A, R.G., 300 2.010m AT 0.40%
- P501 STORM SEWER, CL.A, R.G., 300 27.854m AT 0.50%
- P502 STORM SEWER, CL.A, R.G., 300 3.044m AT 0.40%
- P503 STORM SEWER, CL.A, R.G., 300 18.861m AT 0.50%
- P504 STORM SEWER, CL.A, R.G., 300 2.848m AT 4.0%
- P505 STORM SEWER, CL.A, R.G., 450 18.946m AT 0.45%
- P506 STORM SEWER, CL.A, R.G., 300 5.310m AT 1.40%
- P507 STORM SEWER, CL.A, R.G., 300 25.407m AT 1.0%
- P508 STORM SEWER, CL.A, R.G., 300 25.181m AT 1.0%
- P509 STORM SEWER, CL.A, R.G., 300 22.172m AT 1.0%
- P510 STORM SEWER, CL.A, R.G., 300 2.342m AT 2.0%
- P512 STORM SEWER, CL.A, R.G., 450 20.792m AT 0.40%
- P514 STORM SEWER, CL.A, R.G., 300 24.536m AT 1.0%
- P515 STORM SEWER, CL.A, R.G., 300 1.501m AT 2.0%
- P516 STORM SEWER, CL.A, R.G., 300 6.450m AT 1.0%
- P517 STORM SEWER, CL.A, R.G., 600 29.880m AT 0.40%
- P700 STORM SEWER, CL.A, R.G., 450 40.924m AT 0.35%
- P701 STORM SEWER, CL.A, R.G., 300 4.207m AT 2.0%
- P702 STORM SEWER, CL.A, R.G., 300 4.865m AT 0.50%
- P703 STORM SEWER, CL.A, R.G., 300 23.027m AT 0.50%
- P704 STORM SEWER, CL.A, R.G., 450 12.930m AT 0.50%
- P705 STORM SEWER, CL.A, R.G., 300 2.205m AT 1.0%
- P706 STORM SEWER, CL.A, R.G., 450 18.864m AT 0.50%
- P715 STORM SEWER, CL.A, R.G., 450 8.863m AT 0.50%
- P716 STORM SEWER, CL.A, R.G., 450 3.795m AT 0.50%
- P717 STORM SEWER, CL.A, R.G., 600 21.548m AT 0.30%



FILE: 4306tm47-27.dgn
PLOTTED: 8/11/2011