

F.A.P. RTE.	SECTION	COUNTY	TOTAL SHEETS	SHEET NO.
326	(5CS,13C,108,109R)	KENDALL	931	431
STA.		TO STA.		
FED. ROAD DIST. NO.		ILLINOIS FED. AID PROJECT		

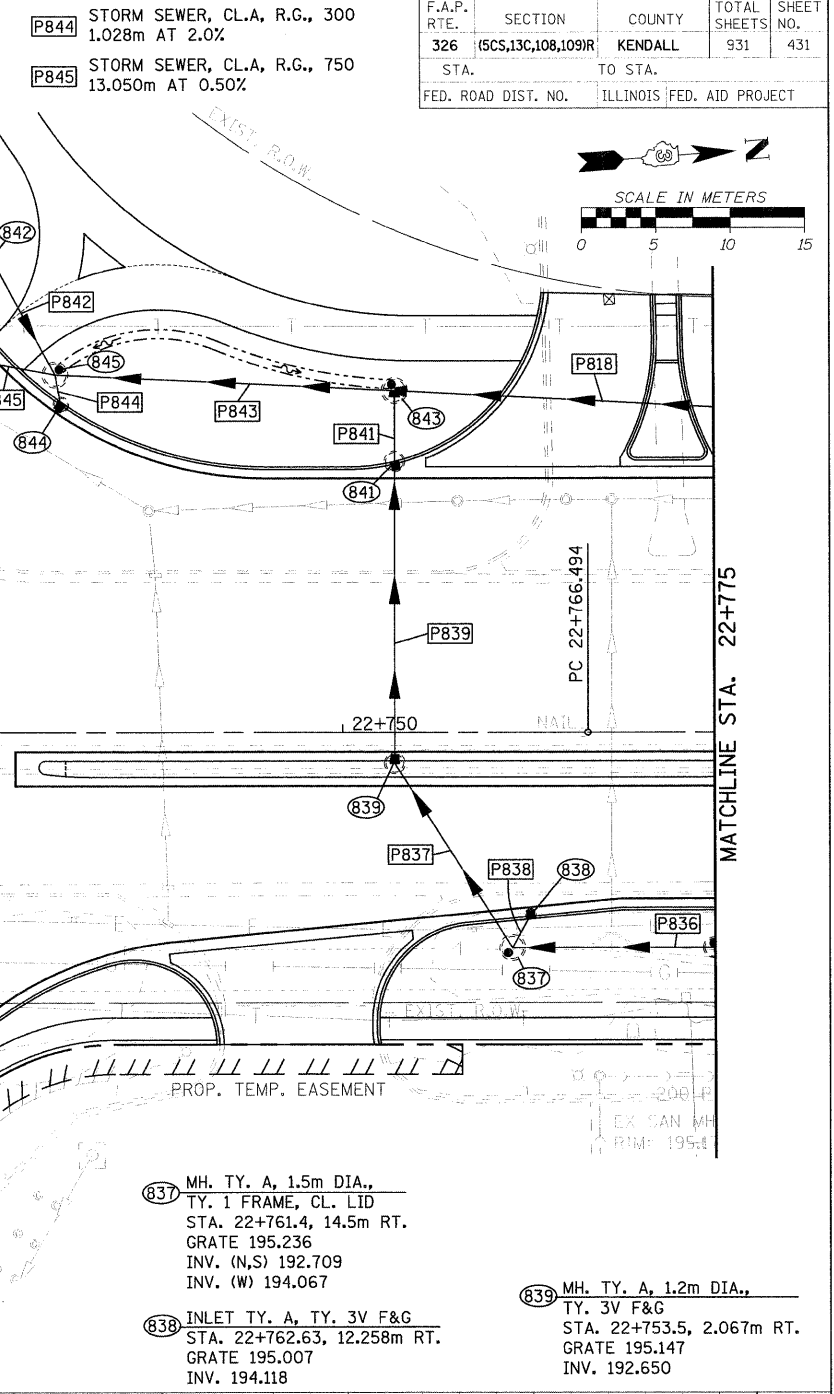
- (713) INLET TY. A, TY. 3V F&G STA. 22+642, 4.068m LT. GRATE 195.283 INV. 194.318
- (714) MH. TY. A, 1.2m DIA., TY. 3V F&G STA. 22+642, 14.837m LT. GRATE 195.080 INV. (E,W) 194.102 INV. (N) 194.155
- (718) INLET TY. A, TY. 3V F&G STA. 22+611.5, 4.068m LT. GRATE 195.170 INV. 194.205
- (719) INLET TY. B, TY. 3V F&G STA. 22+611.5, 14.118m LT. GRATE 194.973 INV. 194.004
- (720) MH. TY. A, 1.2m DIA., TY. 1 FRAME, CL. LID STA. 22+611.5, 18.8m LT. GRATE 195.207 INV. (N,S) 192.938 INV. (E) 193.910
- (721) INLET TY. A, TY. 3V F&G STA. 22+645, 14.826m LT. GRATE 195.088 INV. 194.199
- (722) MH. TY. A, 1.2m DIA., TY. 1 FRAME, CL. LID STA. 22+641, 21.0m LT. GRATE 194.963 INV. (N) 192.546 INV. (S) 192.850 INV. (E) 193.978
- (723) MH. TY. A, 1.5m DIA., TY. 8 GRATE STA. 189+974.891, 37.443m RT. GRATE 194.966 INV. (N,S) 192.475 INV. (W) 192.509

- (P713) STORM SEWER, CL.A, R.G., 300 9.967m AT 2.0%
- (P714) STORM SEWER, CL.A, R.G., 300 4.934m AT 2.0%
- (P718) STORM SEWER, CL.A, R.G., 300 9.413m AT 2.0%
- (P719) STORM SEWER, CL.A, R.G., 300 3.698m AT 2.0%
- (P720) STORM SEWER, CL.A, R.G., 600 28.446m AT 0.30%
- (P721) STORM SEWER, CL.A, R.G., 300 2.198m AT 2.0%
- (P722) STORM SEWER, CL.A, R.G., 600 22.475m AT 0.30%
- (P723) STORM SEWER, CL.A, R.G., 600 17.693m AT 0.30%

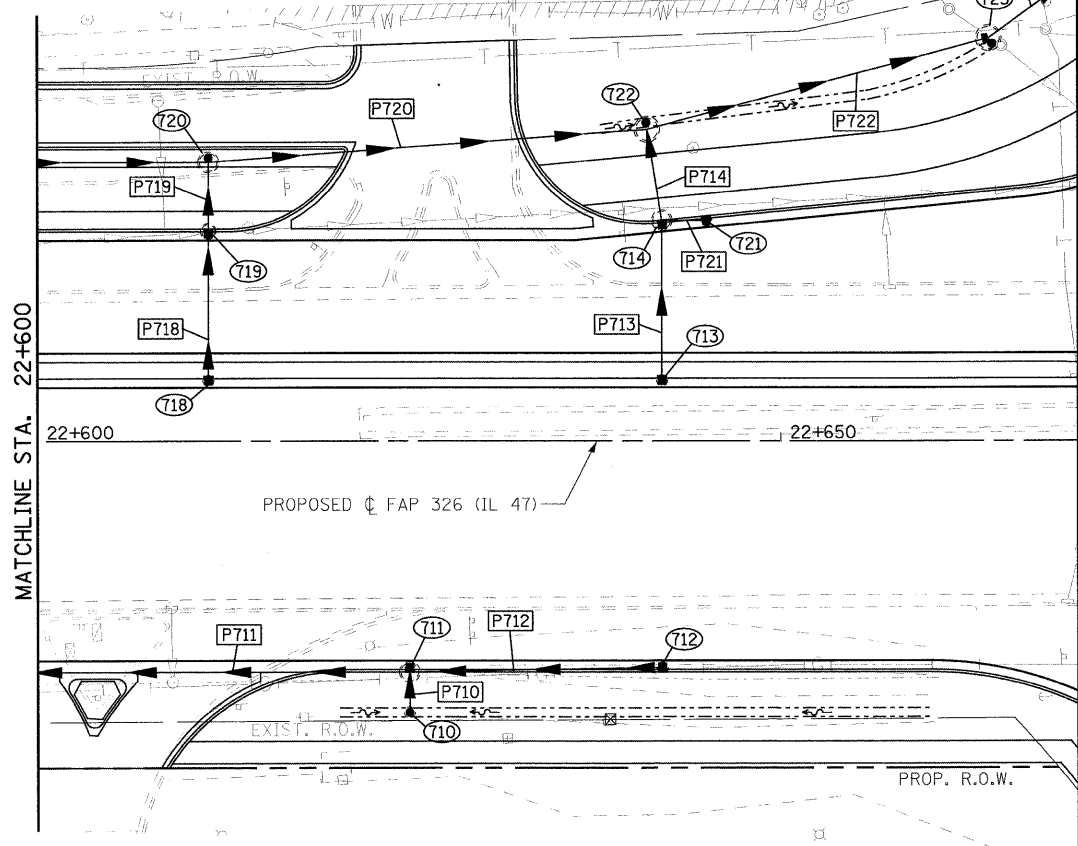
- (P818) STORM SEWER, CL.A, R.G., 600 35.918m AT 0.35%
- (P841) STORM SEWER, CL.A, R.G., 600 3.632m AT 0.40%
- (P842) STORM SEWER, CL.A, R.G., 300 7.854m AT 2.0%
- (P843) STORM SEWER, CL.A, R.G., 750 21.628m AT 0.50%

- (841) MH. TY. A, 1.2m DIA., TY. 3V F&G STA. 22+753.5, 18.232m LT. GRATE 194.923 INV. 192.569
- (842) INLET TY. A, TY. 8 GRATE STA. 22+726.441, 31.8m LT. GRATE 194.500 INV. 193.840
- (843) MH. TY. A, 1.5m DIA., TY. 8 GRATE STA. 22+753.5, 23m LT. GRATE 194.666 INV. (S,E) 192.550 INV. (N) 192.567
- (844) INLET TY. B, TY. 3V F&G STA. 22+731, 21.955m LT. GRATE 194.885 INV. 193.996
- (845) MH. TY. A, 1.5m DIA., TY. 8 GRATE STA. 22+730.698, 24.08m LT. GRATE 194.585 INV. (N,S) 192.436 INV. (E) 193.666 INV. (W) 193.663

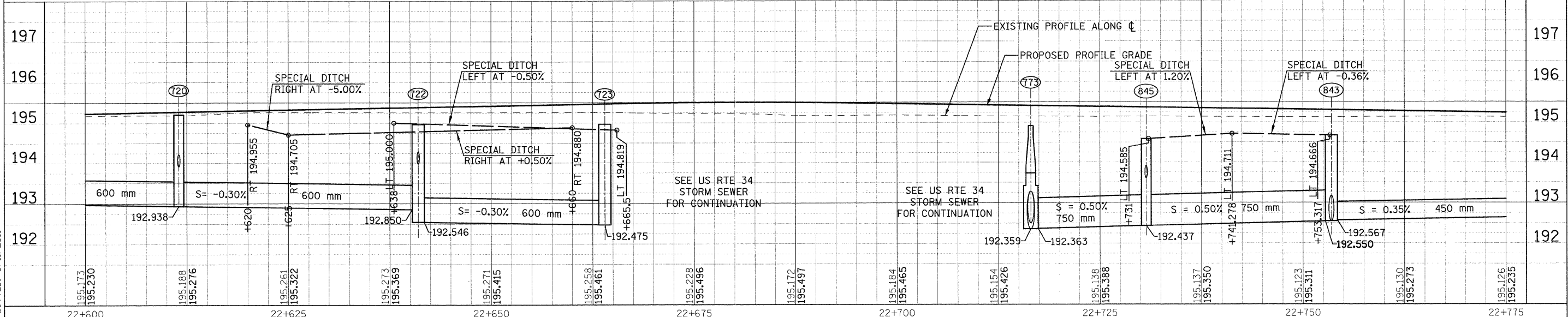
- (P836) STORM SEWER, CL.A, R.G., 600 12.364m AT 0.40%
- (P837) STORM SEWER, CL.A, R.G., 600 13.595m AT 0.40%
- (P838) STORM SEWER, CL.A, R.G., 300 1.596m AT 2.0%
- (P839) STORM SEWER, CL.A, R.G., 600 19.347m AT 0.40%



SEE US RTE 34 STORM SEWER FOR CONTINUATION



- (P710) STORM SEWER, CL.A, R.G., 300 1.907m AT 2.0%
- (P711) STORM SEWER, CL.A, R.G., 300 34.851m AT 1.0%
- (P712) STORM SEWER, CL.A, R.G., 300 16.201m AT 2.0%
- (710) INLET TY. A, TY. 8 GRATE STA. 22+625, 18.275m RT. GRATE 194.810 INV. 194.073
- (711) MH. TY. A, 1.2m DIA., TY. 3V F&G STA. 22+625, 15.566m RT. GRATE 194.991 INV. (E) 194.019 INV. (N,S) 193.824
- (712) INLET TY. A, TY. 3V F&G STA. 22+642, 15.266m RT. GRATE 195.053 INV. 194.164



FILE: 431stn47_28.dgn
PLOTTED: 8/11/2011