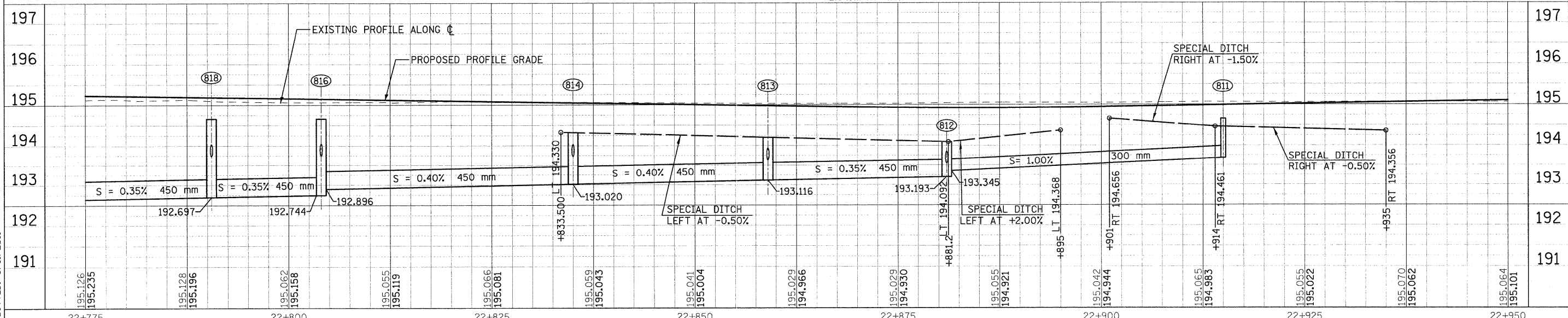
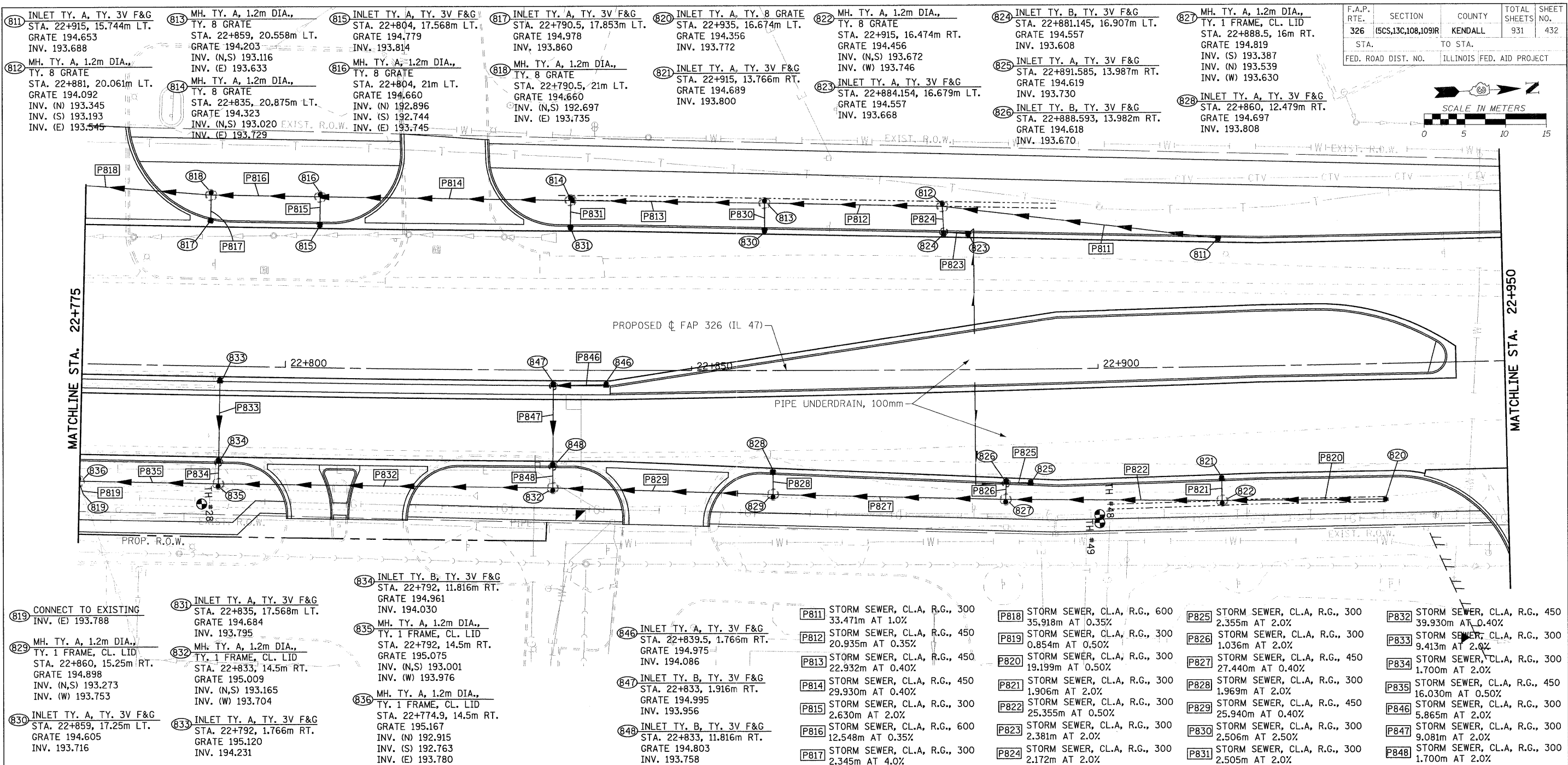
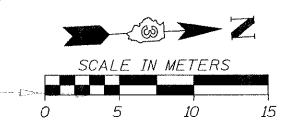


F.A.P. RTE.	SECTION	COUNTY	TOTAL SHEETS	SHEET NO.
326	(5CS,13C,108,109R)	KENDALL	931	432
STA.		TO STA.		
FED. ROAD DIST. NO.		ILLINOIS FED. AID PROJECT		



FILE: 432sm47\_29.dgn  
 PLOTTED: 8/11/2011

Sheets: 03  
 Annot: 87, 807  
 Plots: P, L, A7

HMG JOB NO. 5122