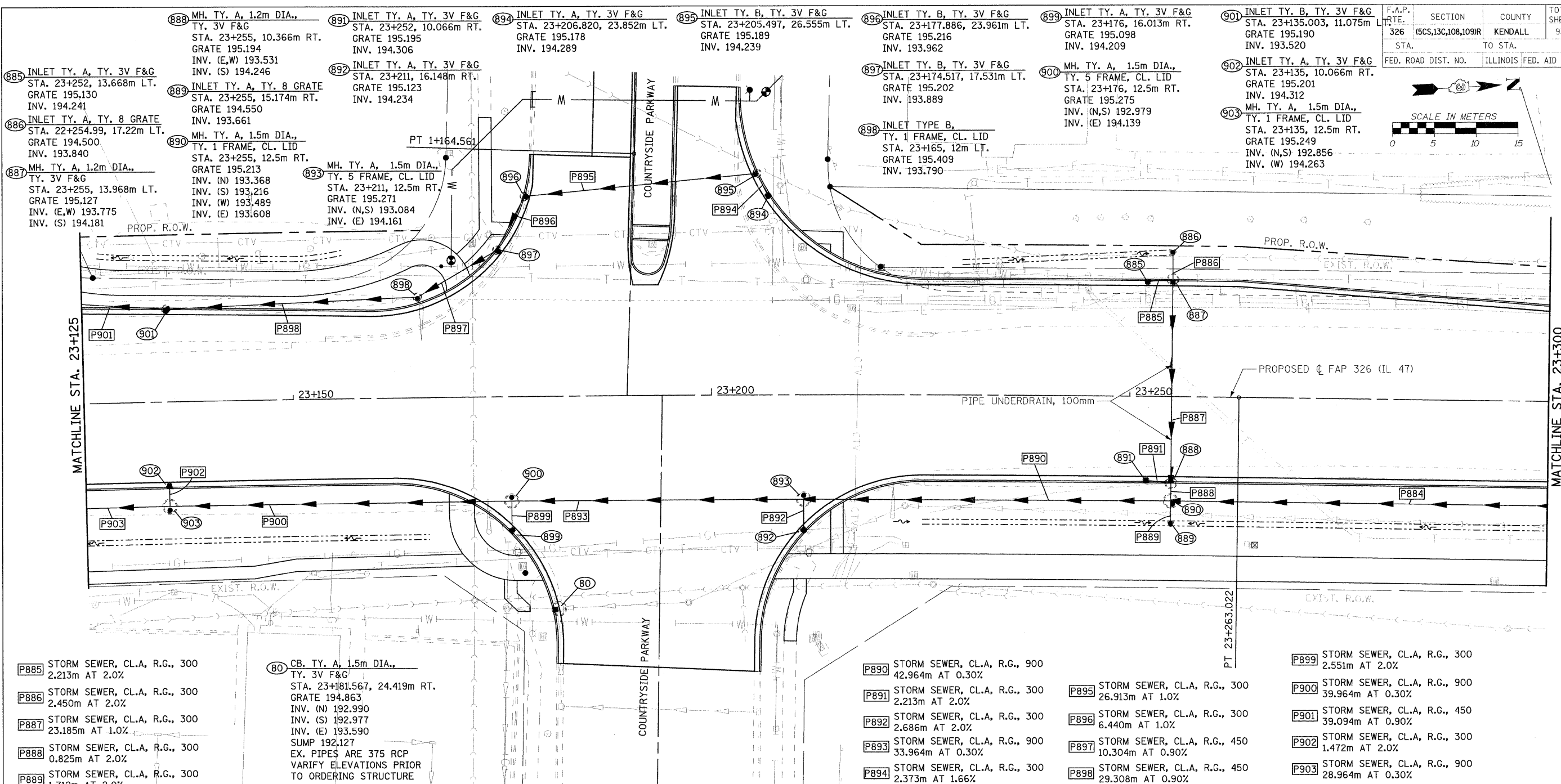
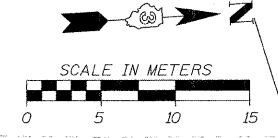
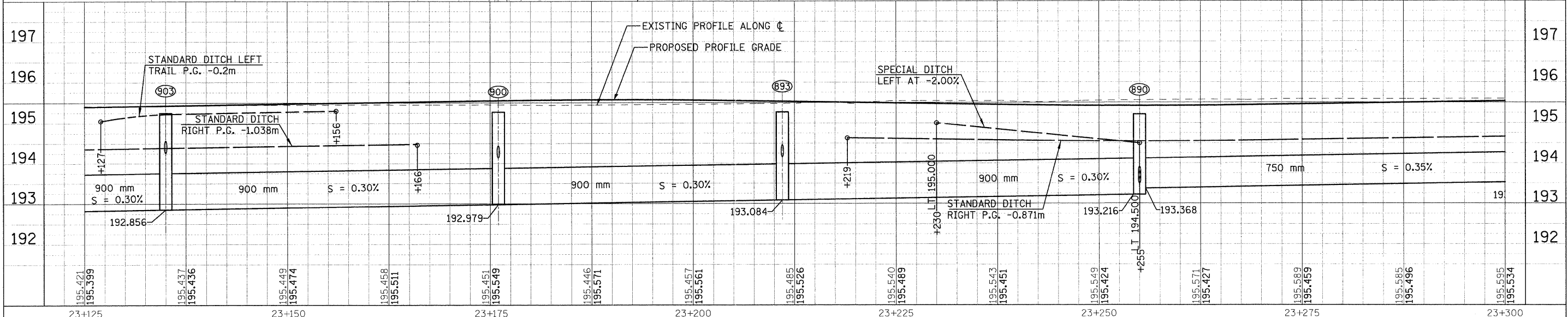


F.A.P. RTE.	SECTION	COUNTY	TOTAL SHEETS	SHEET NO.
326	(5CS,13C,108,109)R	KENDALL	931	434
STA.	TO STA.			
FED. ROAD DIST. NO.	ILLINOIS FED. AID PROJECT			



- P885 STORM SEWER, CL.A, R.G., 300 2.213m AT 2.0%
- P886 STORM SEWER, CL.A, R.G., 300 2.450m AT 2.0%
- P887 STORM SEWER, CL.A, R.G., 300 23.185m AT 1.0%
- P888 STORM SEWER, CL.A, R.G., 300 0.825m AT 2.0%
- P889 STORM SEWER, CL.A, R.G., 300 1.712m AT 2.0%
- 885 MH. TY. A, 1.2m DIA., TY. 3V F&G STA. 23+255, 10.366m RT. GRATE 195.194 INV. (E,W) 193.531 INV. (S) 194.246
- 886 INLET TY. A, TY. 8 GRATE STA. 23+255, 15.174m RT. GRATE 194.550 INV. 193.661
- 887 MH. TY. A, 1.2m DIA., TY. 3V F&G STA. 23+255, 13.968m LT. GRATE 195.127 INV. (E,W) 193.775 INV. (S) 194.181
- 888 MH. TY. A, 1.5m DIA., TY. 1 FRAME, CL. LID STA. 23+255, 12.5m RT. GRATE 195.213 INV. (N) 193.368 INV. (S) 193.216 INV. (W) 193.489 INV. (E) 193.608
- 889 INLET TY. A, TY. 3V F&G STA. 23+252, 10.066m RT. GRATE 195.195 INV. 194.306
- 890 MH. TY. A, 1.5m DIA., TY. 1 FRAME, CL. LID STA. 23+211, 12.5m RT. GRATE 195.271 INV. (N,S) 193.084 INV. (E) 194.161
- 891 INLET TY. A, TY. 3V F&G STA. 23+206.820, 23.852m LT. GRATE 195.178 INV. 194.289
- 892 INLET TY. A, TY. 3V F&G STA. 23+211, 16.148m RT. GRATE 195.123 INV. 194.234
- 893 MH. TY. A, 1.5m DIA., TY. 5 FRAME, CL. LID STA. 23+211, 12.5m RT. GRATE 195.271 INV. (N,S) 193.084 INV. (E) 194.161
- 894 INLET TY. B, TY. 3V F&G STA. 23+205.497, 26.555m LT. GRATE 195.189 INV. 194.239
- 895 INLET TY. B, TY. 3V F&G STA. 23+177.886, 23.961m LT. GRATE 195.216 INV. 193.962
- 896 INLET TY. B, TY. 3V F&G STA. 23+174.517, 17.531m LT. GRATE 195.202 INV. 193.889
- 897 INLET TYPE B, TY. 1 FRAME, CL. LID STA. 23+165, 12m LT. GRATE 195.409 INV. 193.790
- 898 MH. TY. A, 1.5m DIA., TY. 5 FRAME, CL. LID STA. 23+176, 12.5m RT. GRATE 195.275 INV. (N,S) 192.979 INV. (E) 194.139
- 899 INLET TY. B, TY. 3V F&G STA. 23+135.003, 11.075m LT. GRATE 195.190 INV. 193.520
- 900 MH. TY. A, 1.5m DIA., TY. 1 FRAME, CL. LID STA. 23+135, 12.5m RT. GRATE 195.249 INV. (N,S) 192.856 INV. (W) 194.263
- 901 STORM SEWER, CL.A, R.G., 450 39.094m AT 0.90%
- 902 STORM SEWER, CL.A, R.G., 300 1.472m AT 2.0%
- 903 STORM SEWER, CL.A, R.G., 900 28.964m AT 0.30%
- 80 CB. TY. A, 1.5m DIA., TY. 3V F&G STA. 23+181.567, 24.419m RT. GRATE 194.863 INV. (N) 192.990 INV. (S) 192.977 INV. (E) 193.590 SUMP 192.127 EX. PIPES ARE 375 RCP VERIFY ELEVATIONS PRIOR TO ORDERING STRUCTURE
- P890 STORM SEWER, CL.A, R.G., 900 42.964m AT 0.30%
- P891 STORM SEWER, CL.A, R.G., 300 2.213m AT 2.0%
- P892 STORM SEWER, CL.A, R.G., 300 2.686m AT 2.0%
- P893 STORM SEWER, CL.A, R.G., 900 33.964m AT 0.30%
- P894 STORM SEWER, CL.A, R.G., 300 2.373m AT 1.66%
- P895 STORM SEWER, CL.A, R.G., 300 26.913m AT 1.0%
- P896 STORM SEWER, CL.A, R.G., 300 6.440m AT 1.0%
- P897 STORM SEWER, CL.A, R.G., 450 10.304m AT 0.90%
- P898 STORM SEWER, CL.A, R.G., 450 29.308m AT 0.90%
- P899 STORM SEWER, CL.A, R.G., 300 2.551m AT 2.0%
- P900 STORM SEWER, CL.A, R.G., 900 39.964m AT 0.30%
- P901 STORM SEWER, CL.A, R.G., 450 39.094m AT 0.90%
- P902 STORM SEWER, CL.A, R.G., 300 1.472m AT 2.0%
- P903 STORM SEWER, CL.A, R.G., 900 28.964m AT 0.30%



FILE: 434stn47_31.dgn
PLOTTED: 8/11/2011