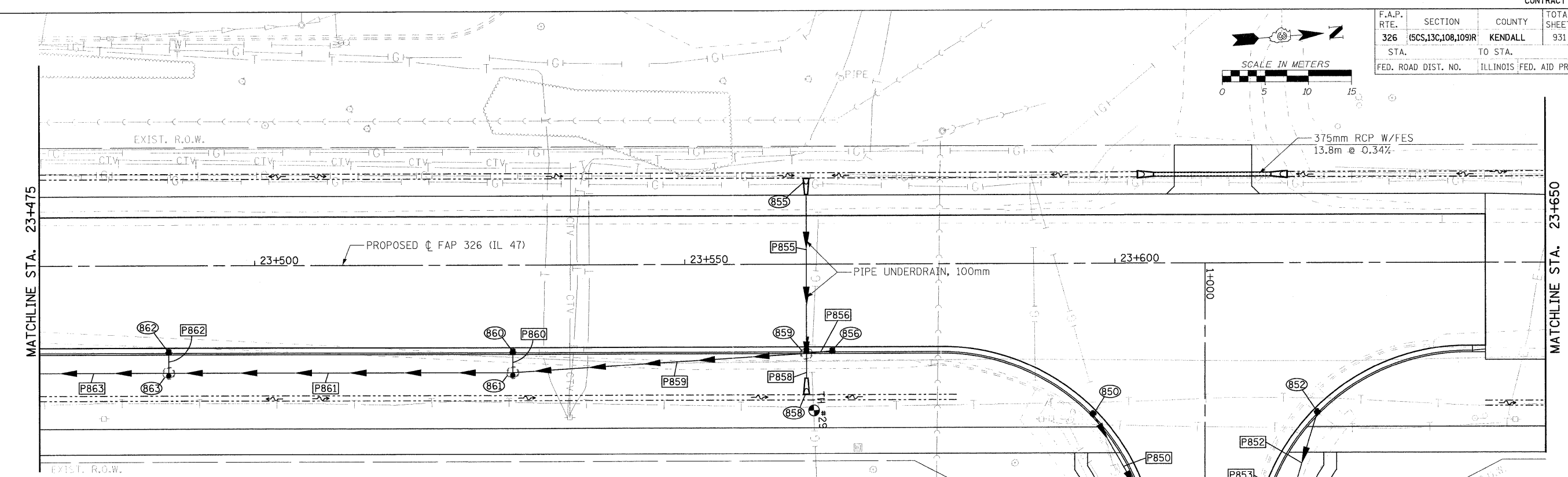
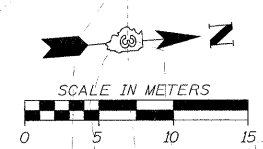
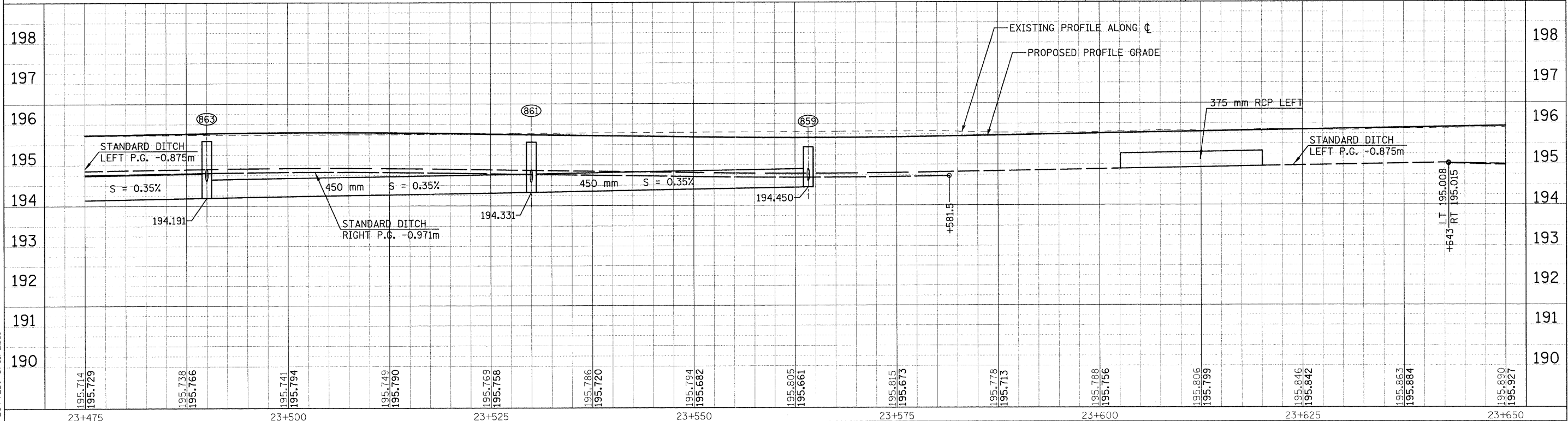


F.A.P. RTE.	SECTION	COUNTY	TOTAL SHEETS NO.
326	(SCS,13C,108,109)R	KENDALL	931
STA.	TO STA.		SHEET NO.
			436
FED. ROAD DIST. NO.	ILLINOIS FED. AID PROJECT		



- 850 INLET TY. A, TY. 3V F&G  
STA. 23+597.416, 17.466m RT.  
GRATE 195.390  
INV. 194.501
- 851 INLET TY. B, TY. 3V F&G  
STA. 23+603.171, 27.460m RT.  
GRATE 195.296  
INV. 194.328
- 852 INLET TY. A, TY. 3V F&G  
STA. 23+623.467, 17.294m RT.  
GRATE 195.430  
INV. 194.541
- 853 INLET TY. B, TY. 3V F&G  
STA. 23+617.143, 28.925m RT.  
GRATE 195.300  
INV. 194.188
- 854 MH. TY. A, 1.2m DIA.,  
TY. 1 FRAME, CL. LID  
STA. 23+619.899, 28.999m RT.  
GRATE 195.504  
INV. (S,E) 194.132  
INV. (W) 194.296
- 855 FLARED END SECTION  
STA. 23+564.128, 9.899m LT.  
INV. 194.785
- 856 INLET TY. A, TY. 3V F&G  
STA. 23+567.128, 10.066m RT.  
GRATE 195.434  
INV. 194.621
- 858 FLARED END SECTION  
STA. 23+564.128, 15.072m RT.  
INV. 194.689
- 859 MH. TY. A, 1.2m DIA.,  
TY. 3V F&G  
STA. 23+564.128, 10.367m RT.  
GRATE 195.432  
INV. (S) 194.450  
INV. (N,W) 194.603  
INV. (E) 194.597
- 860 INLET TY. A, TY. 3V F&G  
STA. 23+530, 10.066m RT.  
GRATE 195.515  
INV. 194.626
- 861 MH. TY. A, 1.2m DIA.,  
TY. 1 FRAME, CL. LID  
STA. 23+530, 12.5m RT.  
GRATE 195.564  
INV. (N,S) 194.331  
INV. (W) 194.577
- 862 INLET TY. A, TY. 3V F&G  
STA. 23+490, 10.066m RT.  
GRATE 195.546  
INV. 194.657
- 863 MH. TY. A, 1.2m DIA.,  
TY. 1 FRAME, CL. LID  
STA. 23+490, 12.5m RT.  
GRATE 195.595  
INV. (N) 194.191  
INV. (S) 194.103  
INV. (W) 194.608
- P850 STORM SEWER, CL.A, R.G., 300  
10.896m AT 1.5 %
- P851 STORM SEWER, CL.A, R.G., 300  
13.229m AT 1.0%
- P852 STORM SEWER, CL.A, R.G., 300  
11.407m AT 2.0 %
- P853 STORM SEWER, CL.A, R.G., 300  
1.773m AT 2.0 %
- P854 STORM SEWER, CL.A, R.G., 300  
1.861m AT 1.5%
- P855 STORM SEWER, CL.A, R.G., 300  
19.691m AT 0.90 %
- P856 STORM SEWER, CL.A, R.G., 300  
2.213m AT 0.60%
- P858 STORM SEWER, CL.A, R.G., 300  
4.130m AT 1.95 %
- 849 CONNECT TO EXISTING  
STA. 23+619.868, 32.008m RT.  
INV. 194.085
- P859 STORM SEWER, CL.A, R.G., 450  
33.124m AT 0.35 %
- P860 STORM SEWER, CL.A, R.G., 300  
1.632m AT 2.0%
- P861 STORM SEWER, CL.A, R.G., 450  
38.930m AT 0.35 %
- P862 STORM SEWER, CL.A, R.G., 300  
1.632m AT 2.0 %
- P863 STORM SEWER, CL.A, R.G., 600  
24.048m AT 0.35 %



FILE: 436sttm47\_33.dgn  
PLOTTED: 8/11/2011  
Sheet: 32  
Angle: 85.8535  
C:\dfrs\P.L.L.C.7

HMG JOB NO. 5122