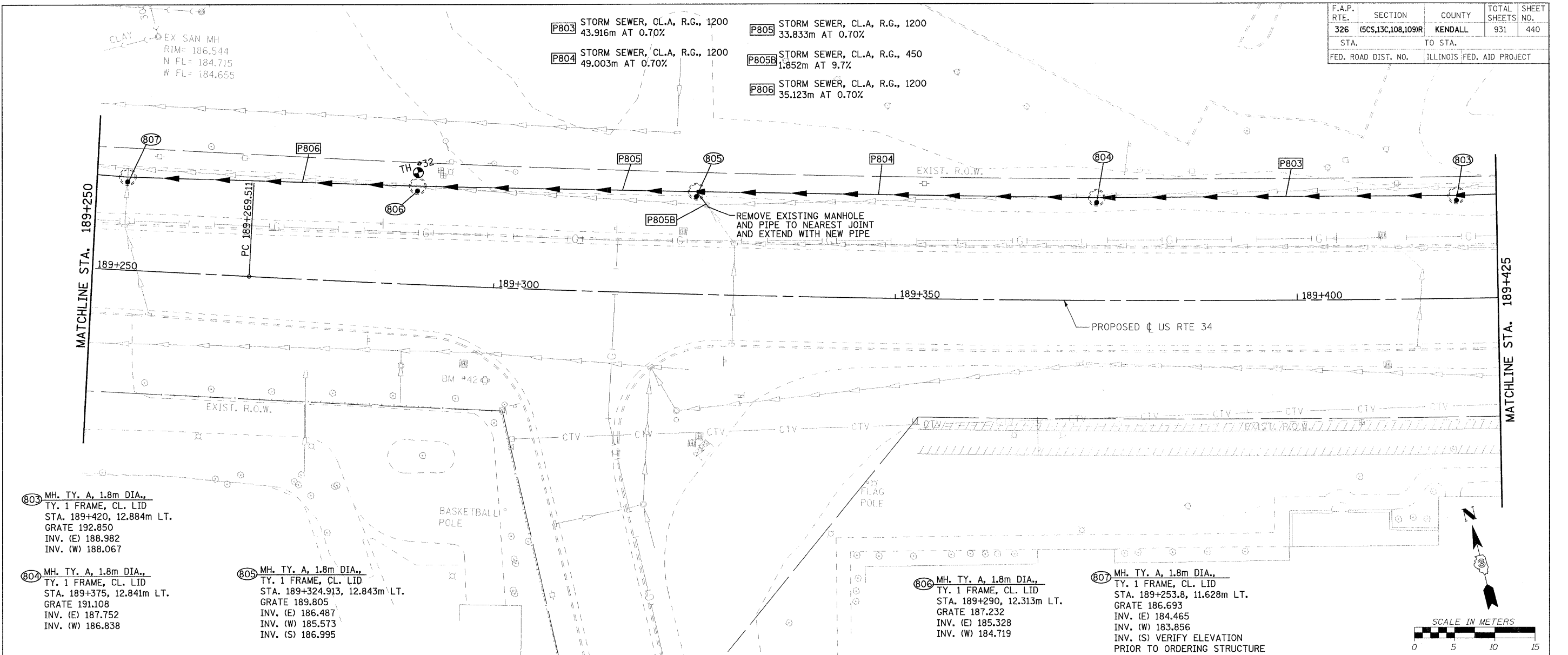


F.A.P. RTE.	SECTION	COUNTY	TOTAL SHEETS	SHEET NO.
326	15CS,13C,108,109R	KENDALL	931	440
STA.	TO STA.			
FED. ROAD DIST. NO.		ILLINOIS FED. AID PROJECT		



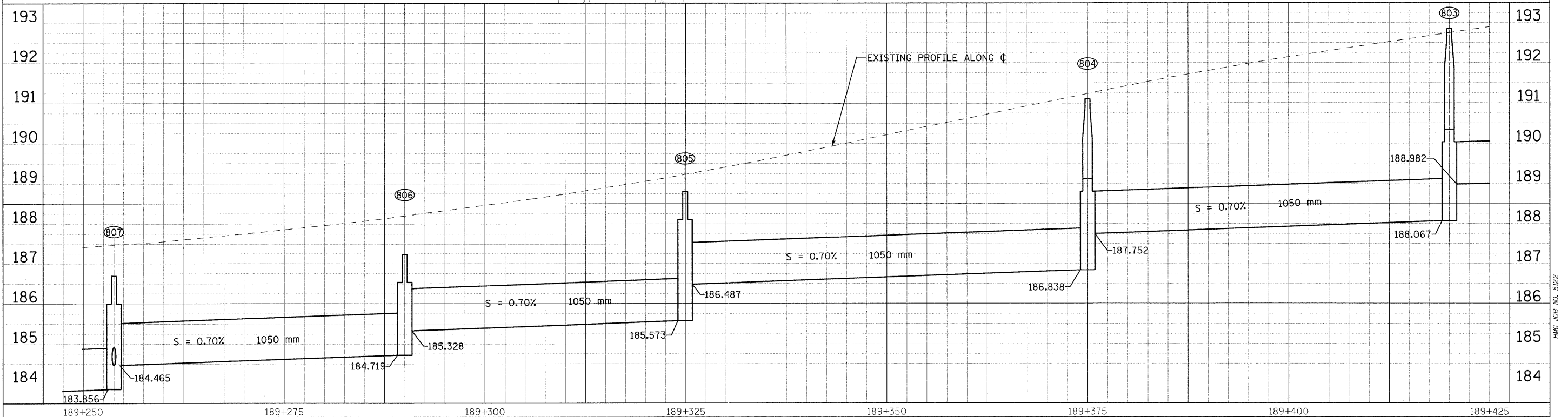
803 MH. TY. A, 1.8m DIA.,
TY. 1 FRAME, CL. LID
STA. 189+420, 12.884m LT.
GRATE 192.850
INV. (E) 188.982
INV. (W) 188.067

804 MH. TY. A, 1.8m DIA.,
TY. 1 FRAME, CL. LID
STA. 189+375, 12.841m LT.
GRATE 191.108
INV. (E) 187.752
INV. (W) 186.838

805 MH. TY. A, 1.8m DIA.,
TY. 1 FRAME, CL. LID
STA. 189+324.913, 12.843m LT.
GRATE 189.805
INV. (E) 186.487
INV. (W) 185.573
INV. (S) 186.995

806 MH. TY. A, 1.8m DIA.,
TY. 1 FRAME, CL. LID
STA. 189+290, 12.313m LT.
GRATE 187.232
INV. (E) 185.328
INV. (W) 184.719

807 MH. TY. A, 1.8m DIA.,
TY. 1 FRAME, CL. LID
STA. 189+253.8, 11.628m LT.
GRATE 186.693
INV. (E) 184.465
INV. (W) 183.856
INV. (S) VERIFY ELEVATION
PRIOR TO ORDERING STRUCTURE



FILE: 440atmUS34_2.dgn
PLOTTED: 6/11/2011

HMC JOB NO. 5122