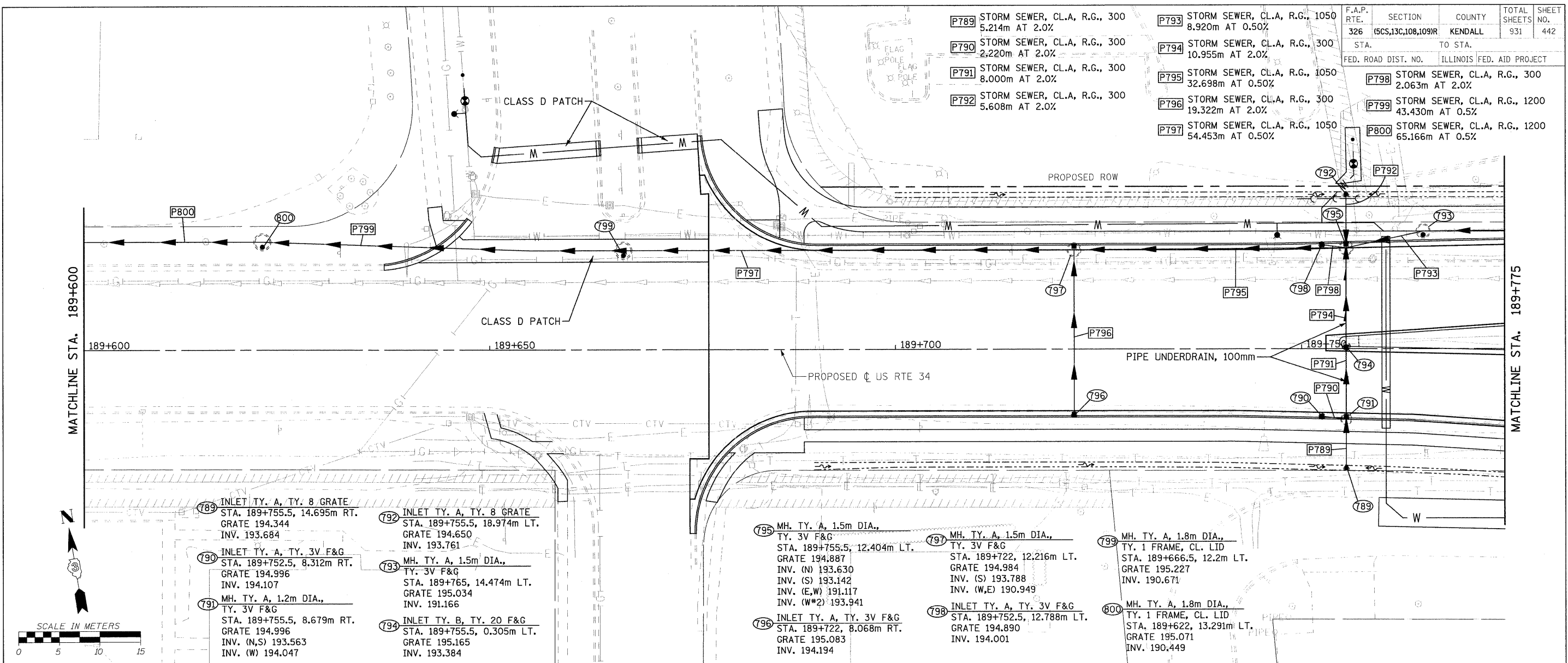
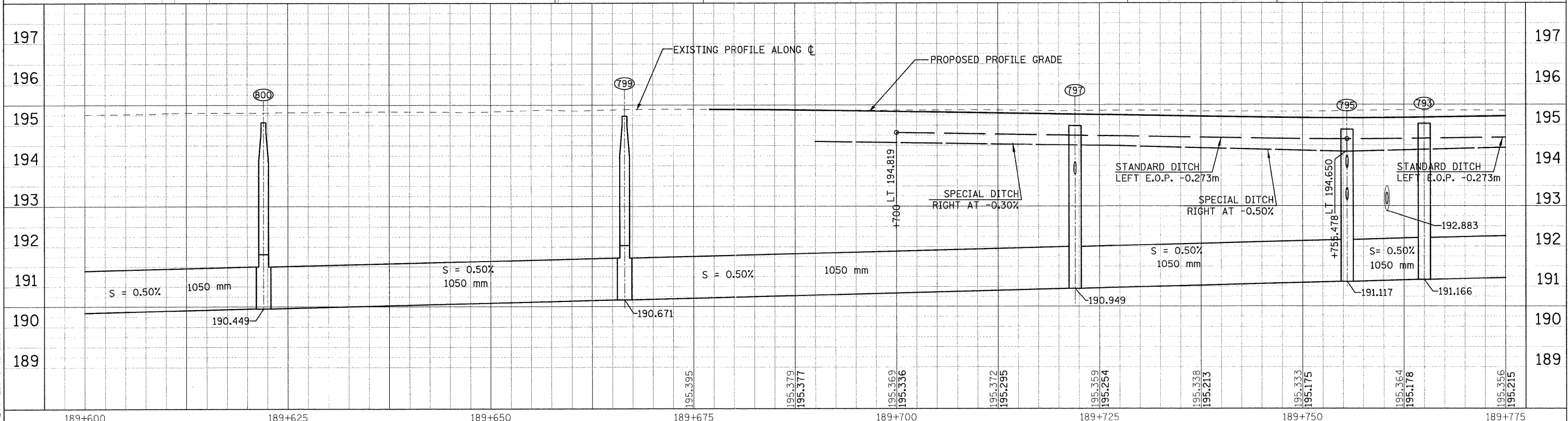


F.A.P. RTE.	SECTION	COUNTY	TOTAL SHEETS	SHEET NO.
326	(5CS,13C,108,109R)	KENDALL	931	442
STA.		TO STA.		
FED. ROAD DIST. NO.		ILLINOIS FED. AID PROJECT		

- P789 STORM SEWER, CL.A, R.G., 300 5.214m AT 2.0%
- P790 STORM SEWER, CL.A, R.G., 300 2.220m AT 2.0%
- P791 STORM SEWER, CL.A, R.G., 300 8.000m AT 2.0%
- P792 STORM SEWER, CL.A, R.G., 300 5.608m AT 2.0%
- P793 STORM SEWER, CL.A, R.G., 1050 8.920m AT 0.50%
- P794 STORM SEWER, CL.A, R.G., 300 10.955m AT 2.0%
- P795 STORM SEWER, CL.A, R.G., 1050 32.698m AT 0.50%
- P796 STORM SEWER, CL.A, R.G., 300 19.322m AT 2.0%
- P797 STORM SEWER, CL.A, R.G., 1050 54.453m AT 0.50%
- P798 STORM SEWER, CL.A, R.G., 300 2.063m AT 2.0%
- P799 STORM SEWER, CL.A, R.G., 1200 43.430m AT 0.5%
- P800 STORM SEWER, CL.A, R.G., 1200 65.166m AT 0.5%



- 789 INLET TY. A, TY. 8 GRATE STA. 189+755.5, 14.695m RT. GRATE 194.344 INV. 193.684
- 790 INLET TY. A, TY. 3V F&G STA. 189+752.5, 8.312m RT. GRATE 194.996 INV. 194.107
- 791 MH. TY. A, 1.2m DIA., TY. 3V F&G STA. 189+755.5, 8.679m RT. GRATE 194.996 INV. (N,S) 193.563 INV. (W) 194.047
- 792 INLET TY. A, TY. 8 GRATE STA. 189+755.5, 18.974m LT. GRATE 194.650 INV. 193.761
- 793 MH. TY. A, 1.5m DIA., TY. 3V F&G STA. 189+765, 14.474m LT. GRATE 195.034 INV. 191.166
- 794 INLET TY. B, TY. 20 F&G STA. 189+755.5, 0.305m LT. GRATE 195.165 INV. 193.384
- 795 MH. TY. A, 1.5m DIA., TY. 3V F&G STA. 189+755.5, 12.404m LT. GRATE 194.887 INV. (N) 193.630 INV. (S) 193.142 INV. (E,W) 191.117 INV. (W*2) 193.941
- 796 INLET TY. A, TY. 3V F&G STA. 189+722, 8.068m RT. GRATE 195.083 INV. 194.194
- 797 MH. TY. A, 1.5m DIA., TY. 3V F&G STA. 189+722, 12.216m LT. GRATE 194.984 INV. (S) 193.788 INV. (W,E) 190.949
- 798 INLET TY. A, TY. 3V F&G STA. 189+752.5, 12.788m LT. GRATE 194.890 INV. 194.001
- 799 MH. TY. A, 1.8m DIA., TY. 1 FRAME, CL. LID STA. 189+666.5, 12.2m LT. GRATE 195.227 INV. 190.671
- 800 MH. TY. A, 1.8m DIA., TY. 1 FRAME, CL. LID STA. 189+622, 13.291m LT. GRATE 195.071 INV. 190.449



FILE: 442stms34_4.dgn
PLOTTED: 8/11/2011

HMG JOB NO. 5122