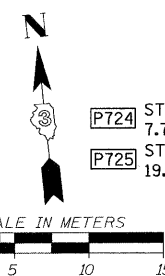
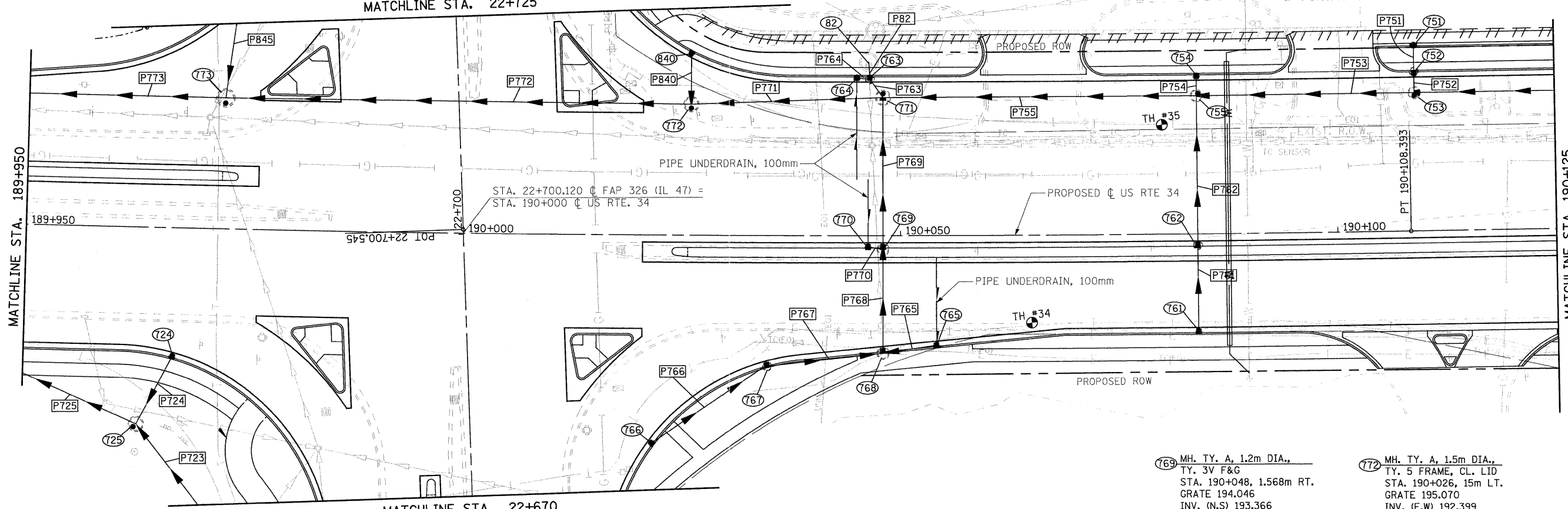
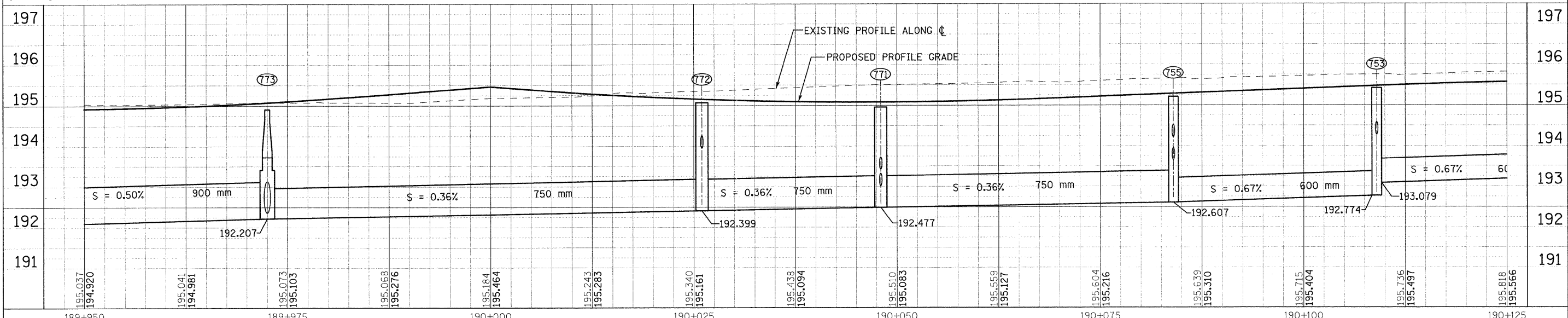


F.A.P. RTE.	SECTION	COUNTY	TOTAL SHEETS	SHEET NO.
326	(5CS,13C,108,109)R	KENDALL	931	444
STA.		TO STA.		
FED. ROAD DIST. NO.		ILLINOIS FED. AID PROJECT		

- (724) INLET TY. A, TY. 3V F&G STA. 189+967.003, 14.752m RT. GRATE 194.902 INV. 194.013
- (725) MH. TY. A, 1.5m DIA., TY. 8 GRATE STA. 189+963.05, 22.568m RT. GRATE 194.913 INV. (E,W) 193.418 INV. (N) 193.838
- (751) INLET TY. A, TY. 11V F&G STA. 190+109, 21.238m LT. GRATE 195.277 INV. 194.388
- (752) INLET TY. B, TY. 3V F&G STA. 190+109, 18.216m LT. GRATE 195.340 INV. 194.340
- (753) MH. TY. A, 1.2m DIA., TY. 5 FRAME, CL. LID STA. 190+109, 15.8m LT. GRATE 195.418 INV. (E) 193.079 INV. (W) 192.774 INV. (N) 194.279
- (754) INLET TY. A, TY. 3V F&G STA. 190+084, 18.066m LT. GRATE 195.152 INV. 194.263
- (755) MH. TY. A, 1.2m DIA., TY. 5 FRAME, CL. LID STA. 190+084, 15.8m LT. GRATE 195.220 INV. (E,W) 192.607 INV. (N) 194.218 INV. (S) 193.650
- (81) CONNECT TO EXISTING STA. 190+046.370, 19.875m LT. INV. 193.370
- (761) INLET TY. A, TY. 3V F&G STA. 190+084, 11.168m RT. GRATE 195.078 INV. 194.189
- (763) INLET TY. B, TY. 3V F&G STA. 190+046.5, 18.216m LT. GRATE 194.889 INV. (W) 193.966 INV. (S) 193.478 INV. (N) 193.337
- (764) INLET TY. A, TY. 3V F&G STA. 190+045, 18.066m LT. GRATE 194.885 INV. 193.996
- (765) INLET TY. A, TY. 3V F&G STA. 190+054.1, 12.559m RT. GRATE 194.878 INV. 193.989
- (766) INLET TY. A, TY. 3V F&G STA. 190+021.696, 23.815m RT. GRATE 195.058 INV. 194.169
- (767) INLET TY. B, TY. 3V F&G STA. 190+034.786, 14.971m RT. GRATE 194.951 INV. 193.870
- (768) MH. TY. A, 1.2m DIA., TY. 3V F&G STA. 190+048, 13.455m RT. GRATE 194.889 INV. (N,W) 193.604 INV. (E) 193.866



- (724) STORM SEWER, CL.A, R.G., 300 7.797m AT 2.0%
- (725) STORM SEWER, CL.A, R.G., 600 19.630m AT 0.30%
- (751) STORM SEWER, CL.A, R.G., 300 2.385m AT 2.0%
- (752) STORM SEWER, CL.A, R.G., 300 1.432m AT 2.0%
- (753) STORM SEWER, CL.A, R.G., 600 24.223m AT 0.67%
- (754) STORM SEWER, CL.A, R.G., 300 1.464m AT 2.0%
- (755) STORM SEWER, CL.A, R.G., 750 35.012m AT 0.36%
- (P82) STORM SEWER, CL.A, R.G., 300 0.363m AT 2.0%
- (P762) STORM SEWER, CL.A, R.G., 300 0.871m AT 2.0%
- (P763) STORM SEWER, CL.A, R.G., 300 1.701m AT 2.0%
- (P761) STORM SEWER, CL.A, R.G., 300 9.263m AT 2.0%
- (P762) STORM SEWER, CL.A, R.G., 300 16.084m AT 2.0%
- (P765) STORM SEWER, CL.A, R.G., 300 5.364m AT 2.0%
- (P766) STORM SEWER, CL.A, R.G., 300 15.161m AT 1.9%
- (P767) STORM SEWER, CL.A, R.G., 300 12.316m AT 2.0%
- (P768) STORM SEWER, CL.A, R.G., 300 10.738m AT 2.0%
- (P769) STORM SEWER, CL.A, R.G., 300 16.059m AT 2.0%
- (P770) STORM SEWER, CL.A, R.G., 300 0.931m AT 2.0%
- (P771) STORM SEWER, CL.A, R.G., 750 20.815m AT 0.36%
- (P772) STORM SEWER, CL.A, R.G., 750 52.116m AT 0.36%
- (P773) STORM SEWER, CL.A, R.G., 900 27.508m AT 0.50%
- (P840) STORM SEWER, CL.A, R.G., 300 4.904m AT 2.0%
- (769) MH. TY. A, 1.2m DIA., TY. 3V F&G STA. 190+048, 1.568m RT. GRATE 194.046 INV. (N,S) 193.366 INV. (W) 194.118
- (770) INLET TY. A, TY. 3V F&G STA. 190+046.293, 1.268m RT. GRATE 195.042 INV. 194.153
- (771) MH. TY. A, 1.5m DIA., TY. 5 FRAME, CL. LID STA. 190+048, 15.8m LT. GRATE 194.958 INV. (E,W) 192.477 INV. (S) 193.018 INV. (N) 193.421
- (772) MH. TY. A, 1.5m DIA., TY. 5 FRAME, CL. LID STA. 190+026, 15m LT. GRATE 195.070 INV. (E,W) 192.399 INV. (N) 193.958
- (773) MH. TY. A, 1.8m DIA., TY. 5 FRAME, CL. LID STA. 189+972.5, 15m LT. GRATE 194.911 INV. (E,W) 192.207 INV. (N) 192.363
- (840) INLET TY. A, TY. 3V F&G STA. 190+025.995, 20.866m LT. GRATE 194.964 INV. 194.075



FILE: 444stnUS34_6.dgn PLOTTED: 8/11/2011

HMC JOB NO. 5122