

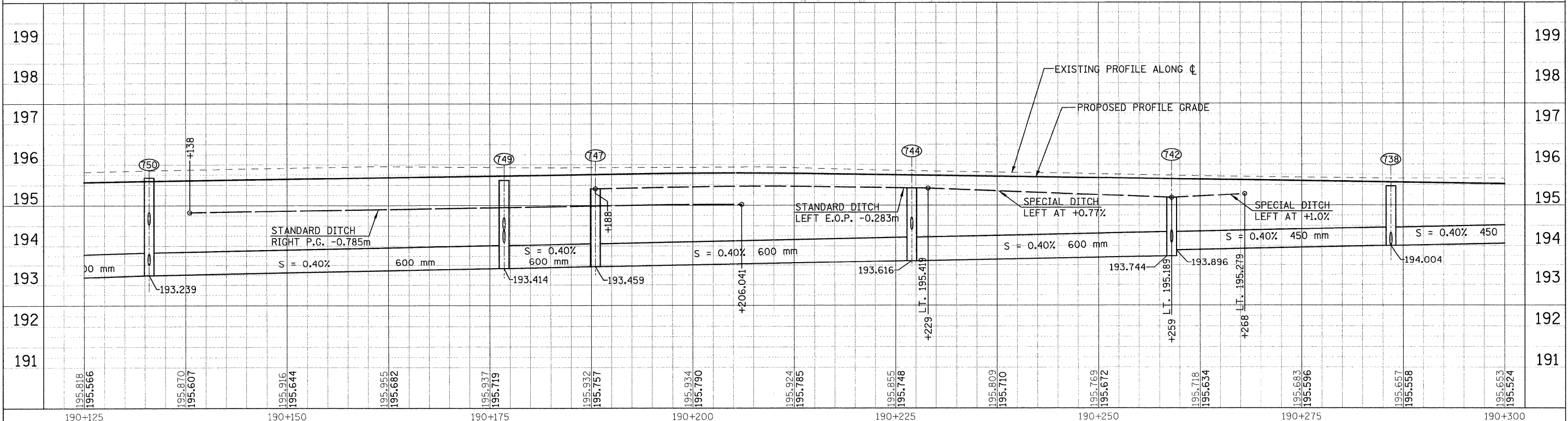
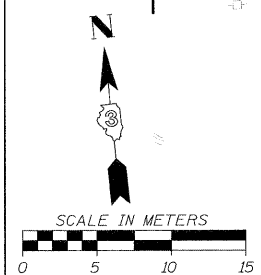
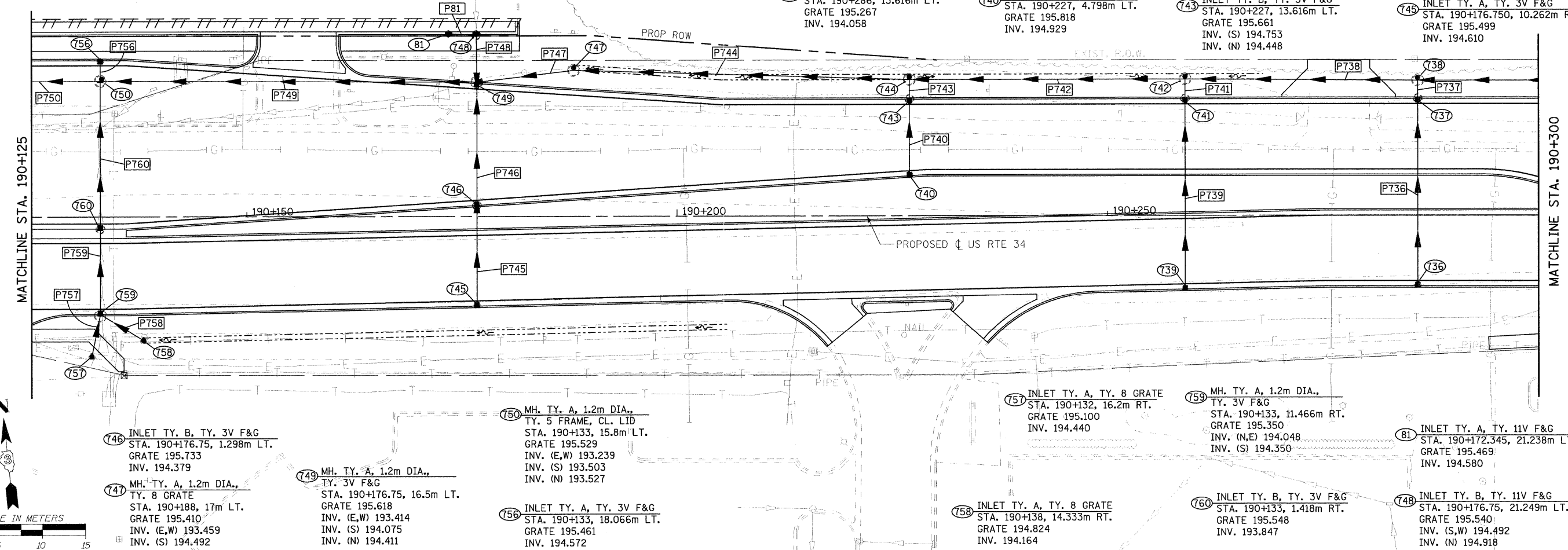
- P736 STORM SEWER, CL.A, R.G., 300 21.047m AT 2.0%
- P737 STORM SEWER, CL.A, R.G., 300 1.099m AT 2.0%
- P738 STORM SEWER, CL.A, R.G., 450 25.930m AT 0.40%
- P739 STORM SEWER, CL.A, R.G., 300 21.414m AT 2.0%
- P740 STORM SEWER, CL.A, R.G., 300 8.181m AT 2.0%
- P741 STORM SEWER, CL.A, R.G., 300 1.274m AT 2.0%
- P742 STORM SEWER, CL.A, R.G., 600 31.048m AT 0.40%
- P743 STORM SEWER, CL.A, R.G., 300 1.274m AT 2.0%
- P744 STORM SEWER, CL.A, R.G., 600 38.065m AT 0.40%

- P745 STORM SEWER, CL.A, R.G., 300 10.923m AT 2.0%
- P746 STORM SEWER, CL.A, R.G., 300 13.370m AT 2.0%
- P747 STORM SEWER, CL.A, R.G., 600 10.379m AT 0.40%
- P749 STORM SEWER, CL.A, R.G., 600 42.799m AT 0.40%
- P750 STORM SEWER, CL.A, R.G., 600 23.223m AT 0.67%
- P756 STORM SEWER, CL.A, R.G., 300 1.464m AT 2.0%
- P757 STORM SEWER, CL.A, R.G., 300 4.037m AT 2.0%
- P758 STORM SEWER, CL.A, R.G., 300 4.962m AT 2.0%
- P759 STORM SEWER, CL.A, R.G., 300 9.064m AT 2.0%
- P760 STORM SEWER, CL.A, R.G., 300 16.234m AT 2.0%

- P81 STORM SEWER, CL.A, R.G., 300 3.768m AT 2.0%
- P748 STORM SEWER, CL.A, R.G., 300 3.765m AT 2.0%
- T36 INLET TY. A, TY. 3V F&G STA. 190+286, 8.068m RT. GRATE 195.381 INV. 194.492
- T37 INLET TY. B, TY. 3V F&G STA. 190+286, 13.616m LT. GRATE 195.267 INV. 194.058
- T38 MH. TY. A, 1.2m DIA., TY. 1 FRAME, CL. LID STA. 190+286, 15.7m LT. GRATE 195.468 INV. (S) 194.017 INV. (E,W) 194.004
- T39 INLET TY. A, TY. 3V F&G STA. 190+259, 8.435m RT. GRATE 195.456 INV. 194.567
- T40 INLET TY. A, TY. 3V F&G STA. 190+227, 4.798m LT. GRATE 195.818 INV. 194.929

- T41 INLET TY. B, TY. 3V F&G STA. 190+259, 13.616m LT. GRATE 195.426 INV. 194.126
- T42 MH. TY. A, 1.2m DIA., TY. 8 GRATE STA. 190+259, 15.874m LT. GRATE 195.189 INV. (S) 194.081 INV. (E) 193.896 INV. (W) 193.744
- T43 INLET TY. B, TY. 3V F&G STA. 190+227, 13.616m LT. GRATE 195.661 INV. (S) 194.753 INV. (N) 194.448
- T44 MH. TY. A, 1.2m DIA., TY. 8 GRATE STA. 190+227, 15.874m LT. GRATE 195.425 INV. (E,W) 193.616 INV. (S) 194.403
- T45 INLET TY. A, TY. 3V F&G STA. 190+176.750, 10.262m RT. GRATE 195.499 INV. 194.610

F.A.P. RTE.	SECTION	COUNTY	TOTAL SHEETS	SHEET NO.
326	(5CS,13C,108,109)R	KENDALL	931	445
STA. TO STA.				
FED. ROAD DIST. NO.		ILLINOIS FED. AID PROJECT		



FILE: 445stmlUS34_7.dgn
PLOTTED: 8/11/2011

HMG JOB NO. 5122