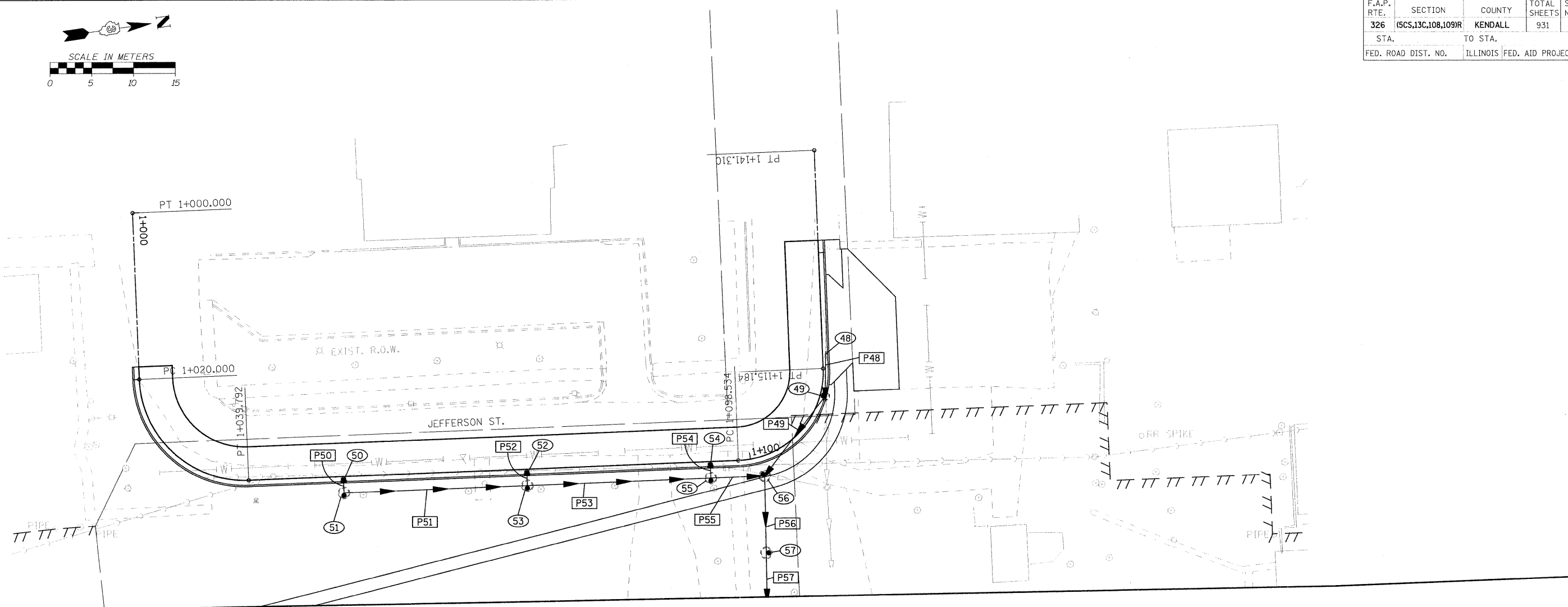
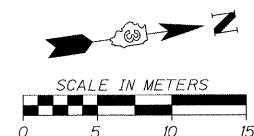


F.A.P. RTE.	SECTION	COUNTY	TOTAL SHEETS	SHEET NO.
326	(SCS,13C,108,109)R	KENDALL	931	448
STA.		TO STA.		
FED. ROAD DIST. NO.		ILLINOIS FED. AID PROJECT		



SEE IL RTE. 47 SHEET FOR STORM SEWER CONTINUATION

- | | | |
|--|---|---|
| <p>P48 STORM SEWER, CL.A, R.G., 300
4.337m AT 4.00%</p> <p>P49 STORM SEWER, CL.A, R.G., 300
11.014m AT 4.00%</p> <p>P50 STORM SEWER, CL.A, R.G., 300
0.706m AT 4.00%</p> <p>P51 STORM SEWER, CL.A, R.G., 300
20.855m AT 4.00%</p> <p>P52 STORM SEWER, CL.A, R.G., 300
0.706m AT 4.00%</p> <p>P53 STORM SEWER, CL.A, R.G., 300
20.855m AT 4.00%</p> <p>P54 STORM SEWER, CL.A, R.G., 300
0.705m AT 4.50%</p> <p>P55 STORM SEWER, CL.A, R.G., 300
5.321m AT 4.00%</p> <p>P56 STORM SEWER, CL.A, R.G., 300
8.072m AT 4.50%</p> <p>P57 STORM SEWER, CL.A, R.G., 300
6.851m AT 4.50%</p> | <p>48 CONNECT TO EXISTING
STA. 20+756.598, 53.607m LT.
INV. 192.167</p> <p>49 INLET TY. B, TY. 11V F&G
STA. 20+756.438, 48.636m LT.
GRATE 192.952
INV. (W) 191.516
INV. (SE) 191.968</p> <p>50 INLET TY. A, TY. 11V F&G
STA. 20+698.513, 39.662m LT.
GRATE 194.614
INV. 193.573</p> <p>51 MH. TY. A, 1.2m DIA.,
TY. 1 FRAME, CL. LID
STA. 20+698.531, 38.154m LT.
GRATE 194.463
INV. 193.512</p> <p>52 INLET TY. A, TY. 11V F&G
STA. 20+720.514, 40.127m LT.
GRATE 193.844
INV. 192.803</p> <p>53 MH. TY. A, 1.2m DIA.,
TY. 1 FRAME, CL. LID
STA. 20+720.531, 38.619m LT.
GRATE 193.686
INV. (N,S) 192.632
INV. (W) 192.742</p> <p>54 INLET TY. A, TY. 11V F&G
STA. 20+742.514, 40.592m LT.
GRATE 193.162
INV. 192.075</p> | <p>55 MH. TY. A, 1.2m DIA.,
TY. 1 FRAME, CL. LID
STA. 20+742.531, 39.085m LT.
GRATE 192.897
INV. (N) 191.295
INV. (S) 191.752
INV. (W) 192.007</p> <p>56 MH. TY. A, 1.2m DIA.,
TY. 1 FRAME, CL. LID
STA. 20+749, 39.221m LT.
GRATE 192.919
INV. (E) 189.207
INV. (S) 191.036
INV. (NW) 191.036</p> <p>57 MH. TY. A, 1.2m DIA.,
TY. 1 FRAME, CL. LID
STA. 20+749, 30.000m LT.
GRATE 190.424
INV. (E) 186.963
INV. (W) 188.792</p> |
|--|---|---|

FILE: 448stmJeff.dgn
PLOTTED: 8/17/2011

HMG JOB NO. 5122