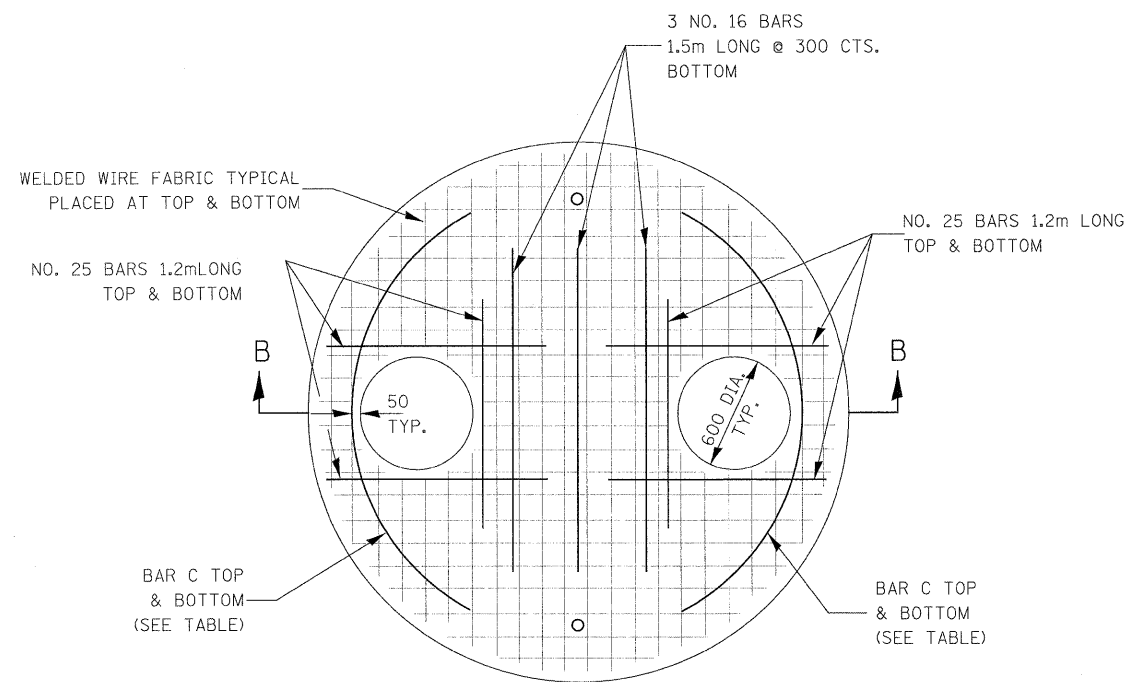
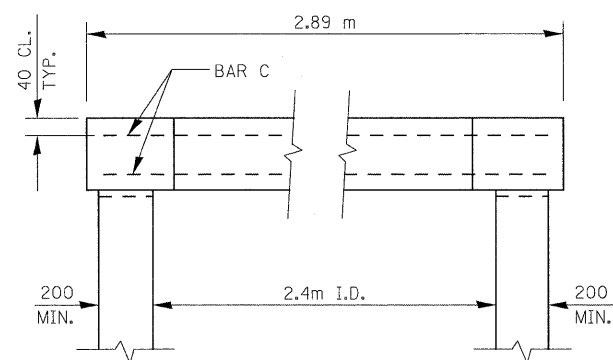


F.A.P. RTE.	SECTION	COUNTY	TOTAL SHEETS	SHEET NO.
326	(5CS,13C,108,109)R	KENDALL	931	452
STA.	TO STA.			
FED. ROAD DIST. NO.	ILLINOIS	FED. AID PROJECT		



PLAN



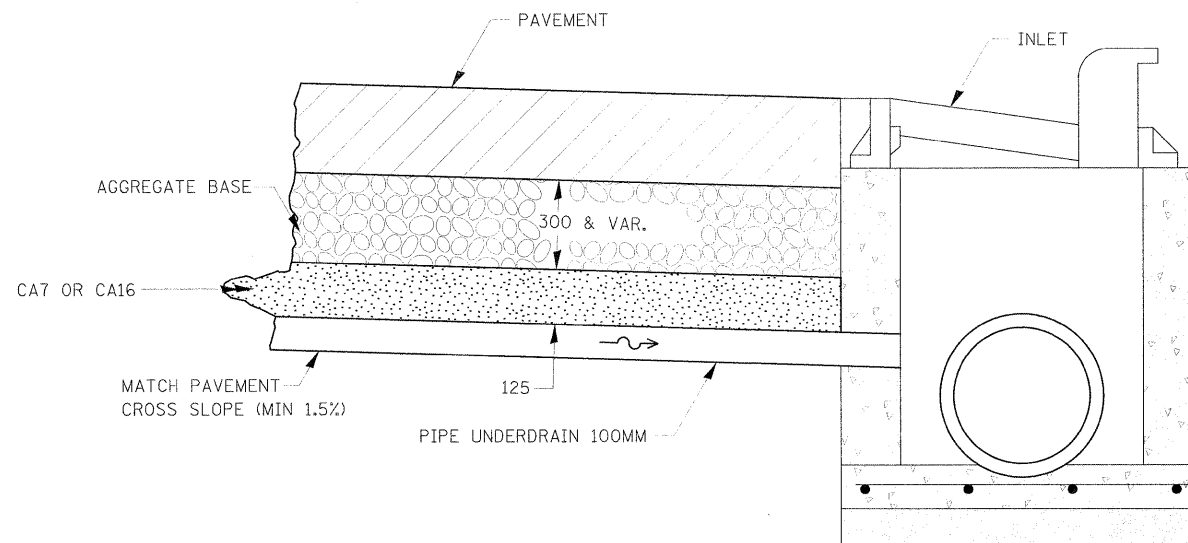
SECTION B-B

DIAMETER OF OPENING	REINFORCEMENT BAR SIZE	REINFORCEMENT "AS" WWF EACH DIRECTION	NO. 13 BAR C	
			LENGTH	RADIUS
600	BOTTOM MAT NO. 25	BOTTOM MAT *** 3325 SQ MM/M	2.6m	1.219m
	TOP MAT NO. 13	TOP MAT *** 470 SQ MM/M		

\*\*\* A MAXIMUM OF TWO LAYERS OF WELDED WIRE FABRIC MAY BE USED TO SATISFY THE REQUIRED "AS" FOR EACH MAT

SEE STD/ 602416 FOR SINGLE OPENING REINFORCEMENT

MANHOLE TYPE A, 2.4 METER DIAMETER, SPECIAL

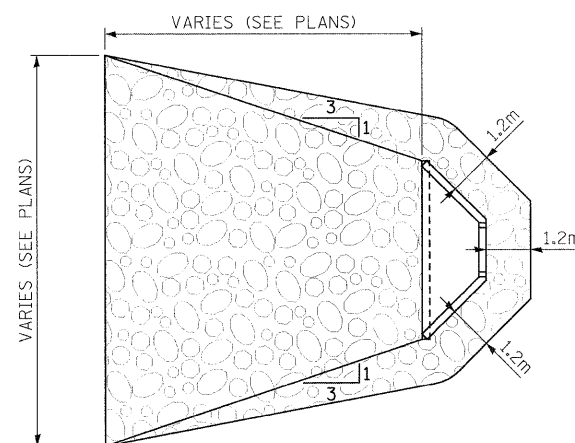


DRAIN FOR AGGREGATE BASES IN URBAN AREAS

DRAINS WILL BE REQUIRED AT ALL INLETS IN "SAG" AREAS AND AS INDICATED IN THE PLANS.

THIS WORK SHALL BE COMPLETED ACCORDING TO SECTION 601 OF THE STANDARD SPECIFICATIONS.

THIS WORK WILL BE PAID FOR AT THE CONTRACT UNIT PRICE PER FOOT FOR PIPE UNDERDRAINS OF THE DIAMETER SPECIFIED WHICH PRICE SHALL INCLUDE THE CA7 OR CA16 AND THE CONNECTION TO THE INLET.



TYPICAL RIPRAP DETAIL AT OUTLET STRUCTURES

REVISIONS		ILLINOIS DEPARTMENT OF TRANSPORTATION
NAME	DATE	
		<b>STORM SEWER DETAILS</b>  DRAWN BY _____ CHECKED BY _____ DATE _____

FILE: 451-452stm\_details.dgn PLOTTED: 8/11/2011

HMG JOB NO. 5122