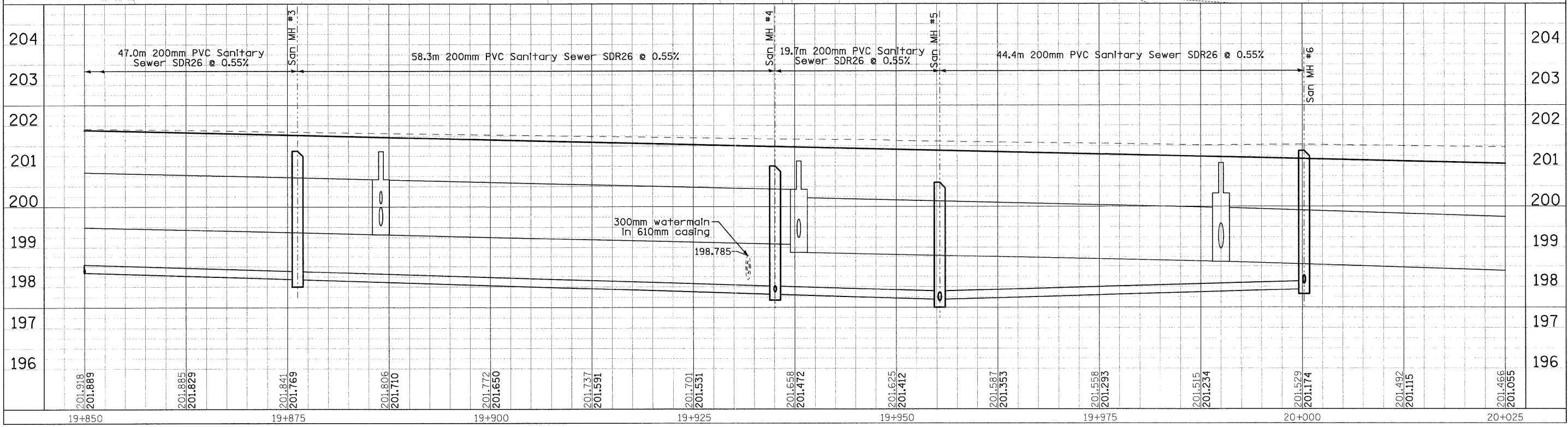
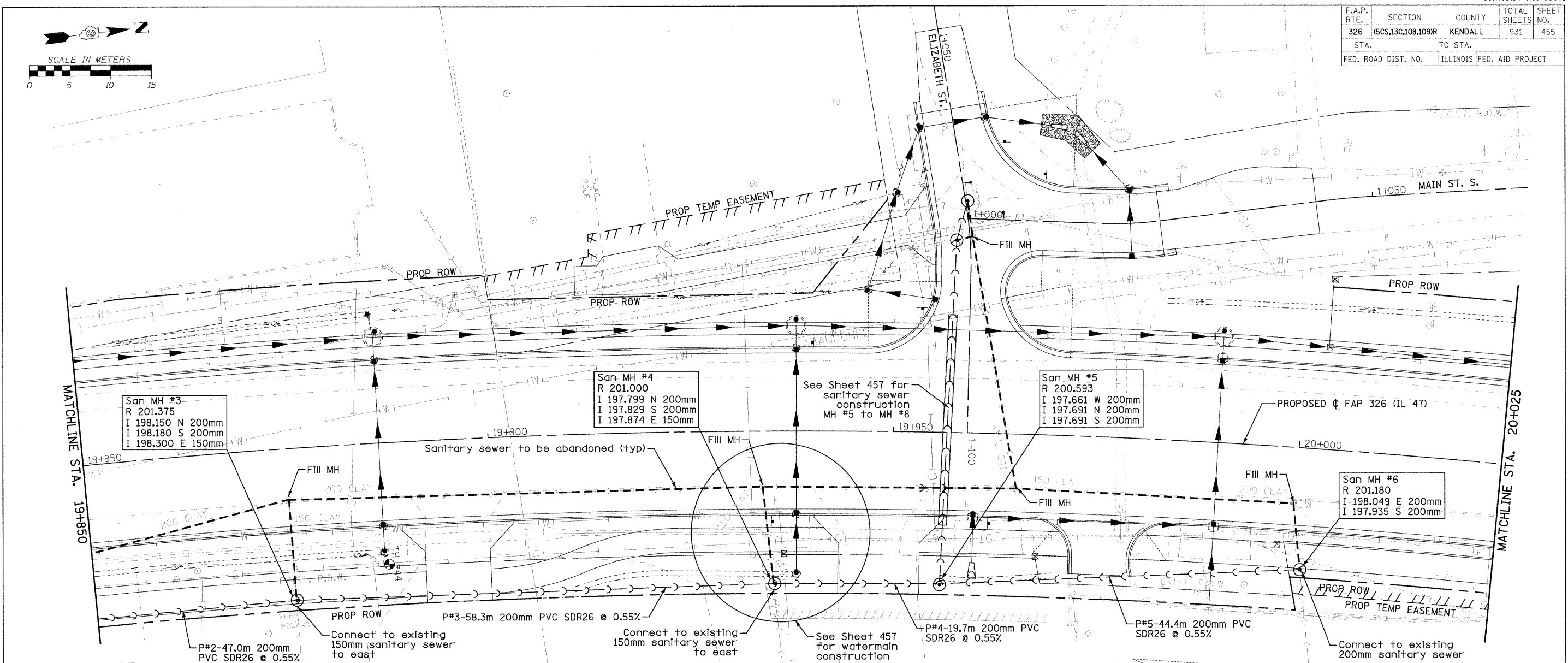
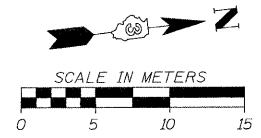


F.A.P. RTE.	SECTION	COUNTY	TOTAL SHEETS	SHEET NO.
326	(5CS,13C,108,109)R	KENDALL	931	455
STA.	TO STA.			
FED. ROAD DIST. NO.	ILLINOIS FED. AID PROJECT			



FILE: 455W&Spp.12.dgn  
PLOTED: 8/11/2011

Sheet: 12  
Angle: 85.226  
Chain: P1147

HMG JOB NO. 5122