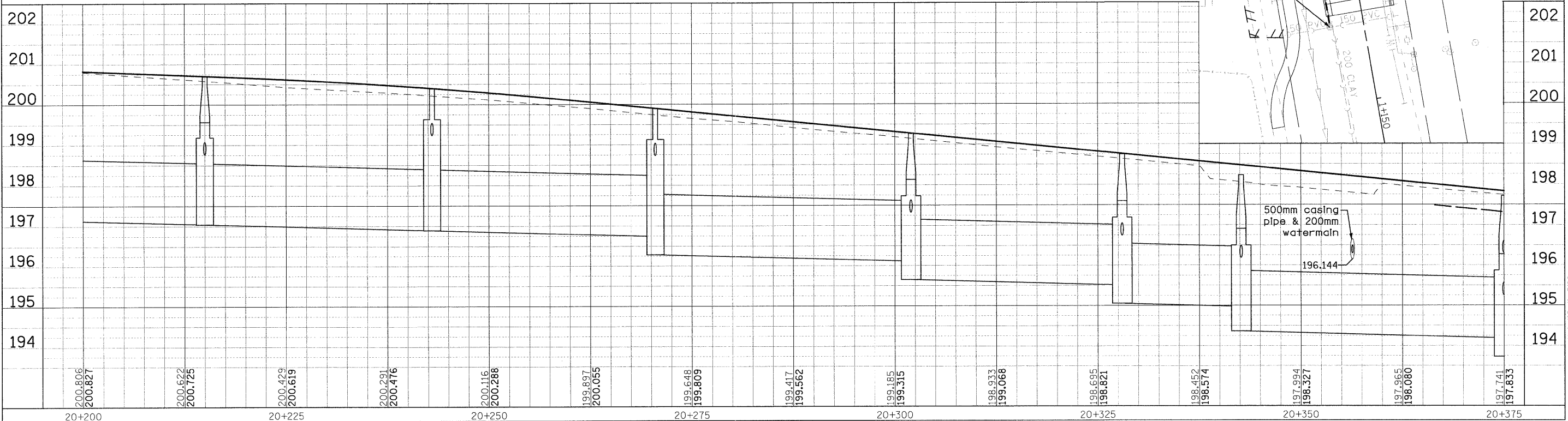
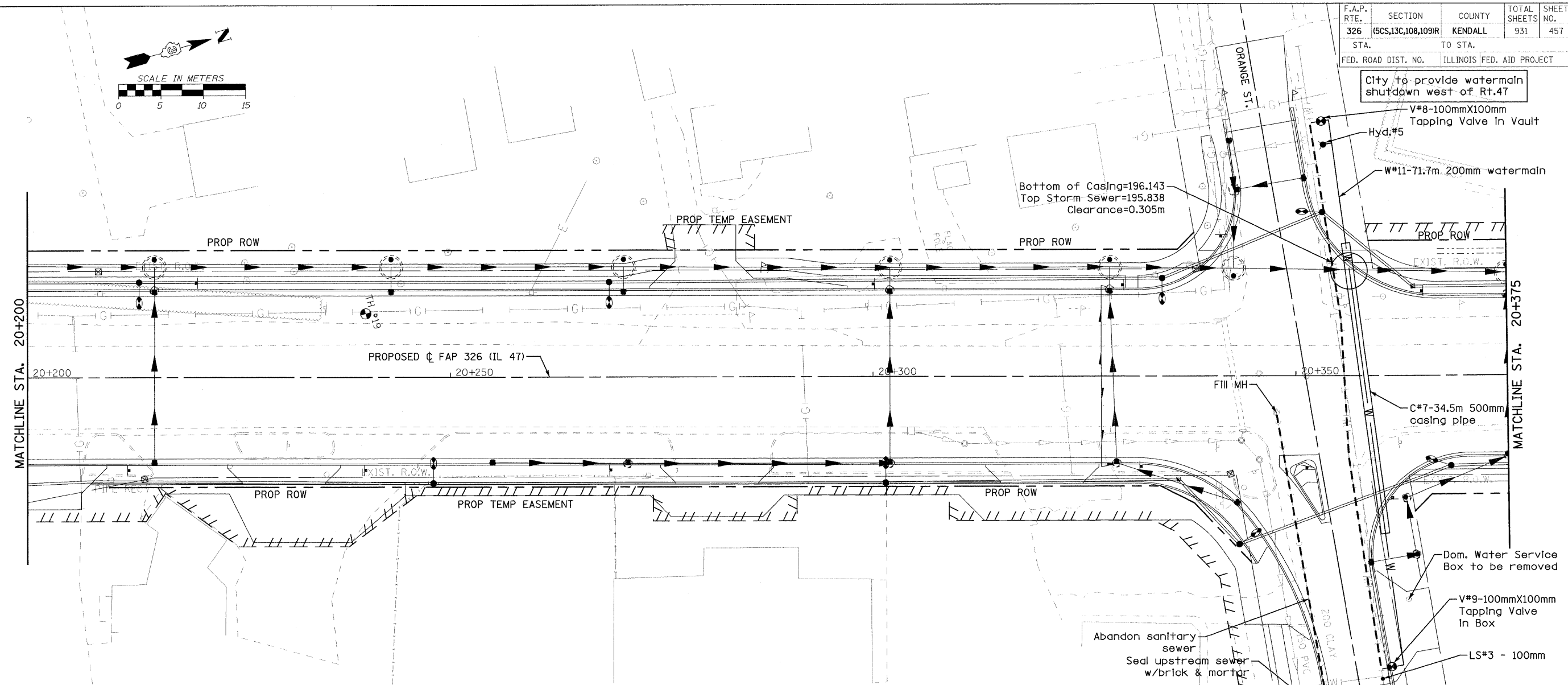
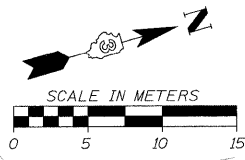


F.A.P. RTE.	SECTION	COUNTY	TOTAL SHEETS	SHEET NO.
326	(5CS,13C,108,109)R	KENDALL	931	457
STA.	TO STA.			
FED. ROAD DIST. NO.	ILLINOIS FED. AID PROJECT			



FILE: 457W&Spp\_14.dgn  
PLOTTED: 8/11/2011

Sheet: 14  
Author: P.L.4  
Checker: P.L.4

HMG JOB NO. 5122