

PARCEL NO. 3KC00019			
COURSE	BEARING	DISTANCE	
POC-1	S 87°29'43" W	199.803 m	655.52'
1-20	S 3°54'29" E	216.984 m	711.89'
20-POB	S 86°05'31" W	18.288 m	60.00'
POB-24	S 3°54'29" E	7.315 m	24.00'
24-25	S 86°05'31" W	1.712 m	5.62'
25-22	N 3°54'29" W	7.315 m	24.00'
22-POB	N 86°05'31" E	1.712 m	5.62'

PARCEL NO. 3KC0020			
COURSE	BEARING	DISTANCE	
POC-1	S 87°29'43" W	199.803 m	655.52'
1-19	S 3°54'29" E	162.873 m	534.36'
19-POB	S 87°29'43" W	18.293 m	60.02'
POB-21	S 3°54'29" E	54.559 m	179.00'
21-22	S 86°05'31" W	1.712 m	5.62'
22-16	N 3°54'29" W	54.601 m	179.14'
16-POB	N 87°29'43" E	1.712 m	5.62'

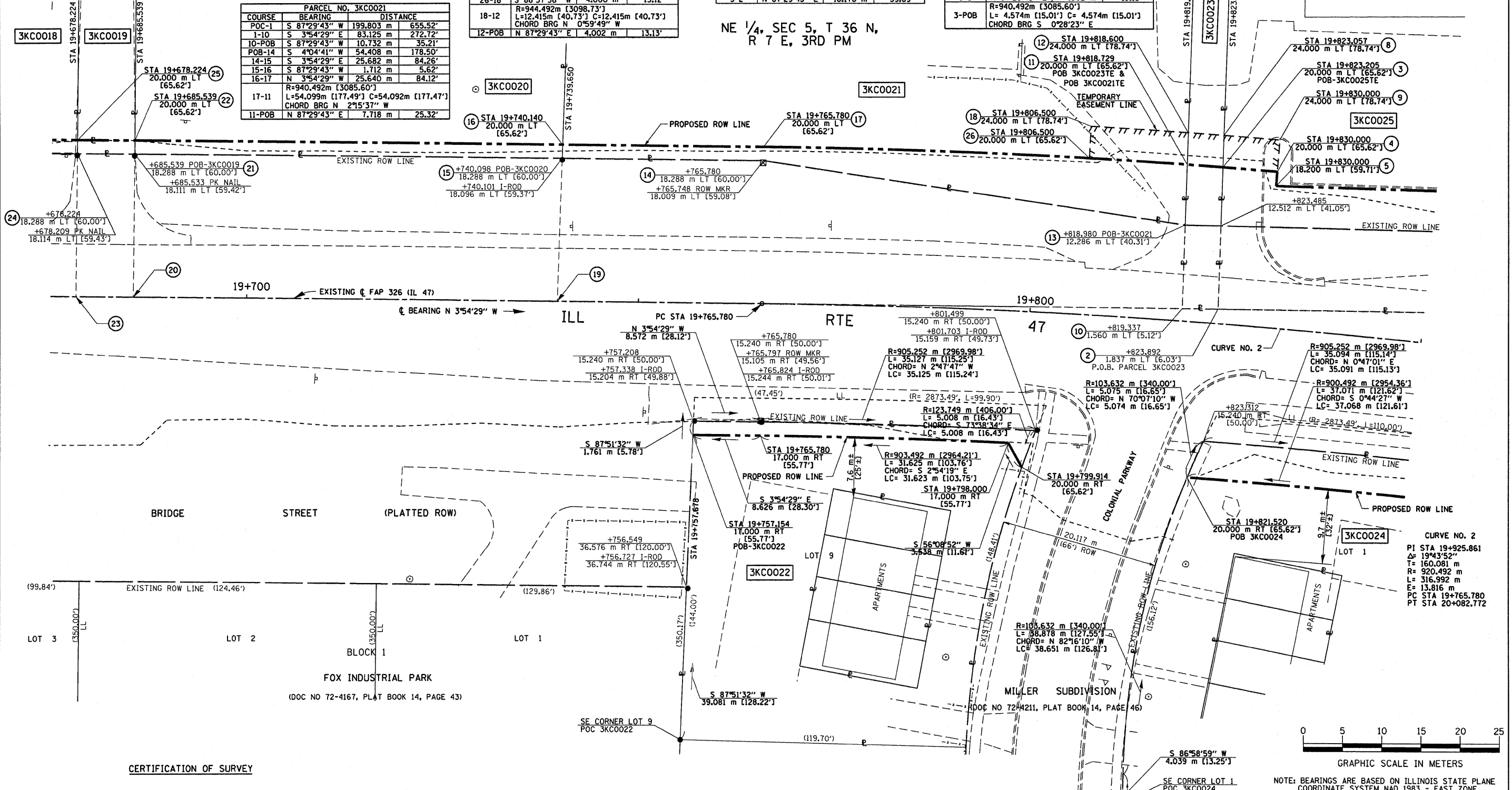
PARCEL NO. 3KC0021E			
COURSE	BEARING	DISTANCE	
POC-1	S 87°29'43" W	199.803 m	655.52'
1-10	S 3°54'29" E	83.125 m	272.72'
10-POB	S 87°29'43" W	18.450 m	60.53'
POB-26	R=940.492m [3085.60'] L=12.494m [40.99'] C=12.494m [40.99'] CHORD BRG S 0°59'34" E		
26-18	S 88°37'36" W	4.000 m	13.12'
18-12	R=944.492m [3098.73'] L=12.415m [40.73'] C=12.415m [40.73'] CHORD BRG N 0°59'49" W		
12-POB	N 87°29'43" E	4.002 m	13.13'

PARCEL NO. 3KC0023			
COURSE	BEARING	DISTANCE	
POC-1	S 87°29'43" W	199.803 m	655.52'
1-POB	S 3°54'29" E	78.553 m	257.72'
POB-10	S 3°54'29" E	4.572 m	15.00'
10-11	S 87°29'43" W	18.450 m	60.53'
11-3	R=940.492m [3085.60'] L=4.574m [15.01'] C=4.574m [15.01'] CHORD BRG N 0°28'23" W		
3-2	N 87°29'43" E	18.176 m	59.63'

PARCEL NO. 3KC0023TE			
COURSE	BEARING	DISTANCE	
POC-1	S 87°29'43" W	199.803 m	655.52'
1-10	S 3°54'29" E	83.125 m	272.72'
10-POB	S 87°29'43" W	18.450 m	60.53'
POB-12	S 87°29'43" W	4.002 m	13.13'
12-8	R=944.492m [3098.73'] L=4.574m [15.01'] C=4.574m [15.01'] CHORD BRG N 0°28'54" W		
8-3	N 87°29'43" E	4.002 m	13.13'
3-POB	R=940.492m [3085.60'] L=4.574m [15.01'] C=4.574m [15.01'] CHORD BRG S 0°28'23" E		

PARCEL NO. 3KC0021			
COURSE	BEARING	DISTANCE	
POC-1	S 87°29'43" W	199.803 m	655.52'
1-10	S 3°54'29" E	83.125 m	272.72'
10-POB	S 87°29'43" W	10.732 m	35.21'
POB-14	S 4°04'41" W	54.408 m	178.50'
14-15	S 3°54'29" E	25.682 m	84.26'
15-16	S 87°29'43" W	1.712 m	5.62'
16-17	N 3°54'29" W	25.640 m	84.12'
17-11	R=940.492m [3085.60'] L=54.099m [177.49'] C=54.092m [177.47'] CHORD BRG N 2°15'37" W		
11-POB	N 87°29'43" E	7.718 m	25.32'

NE 1/4, SEC 5, T 36 N, R 7 E, 3RD PM



DATE	BY	R.O.W. PLAT	NOTEBOOK NO.

CERTIFICATION OF SURVEY

STATE OF ILLINOIS
COUNTY OF KENDALL

I, TIMOTHY C. QUIGG, HEREBY CERTIFY THAT I AM A PROFESSIONAL LAND SURVEYOR OF THE STATE OF ILLINOIS, THAT THE SURVEY OF PROPOSED F.A.P. 326 (IL. 47) WAS MADE BY ME OR UNDER MY DIRECTION AND THAT THE SURVEY IS TRUE AND COMPLETE AS SHOWN TO THE BEST OF MY KNOWLEDGE AND BELIEF, THAT ALL MONUMENTS AND MARKS ARE OF THE CHARACTER AND OCCUPY THE POSITION SHOWN THEREON, AND ARE SUFFICIENT TO ENABLE THE SURVEY TO BE RETRACED.

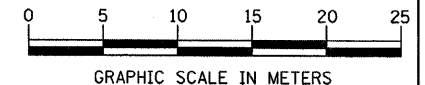
DATE: _____ ILLINOIS PROFESSIONAL LAND SURVEYOR NUMBER 3063
SURVEY BOOK NOS. _____

TIMOTHY C. QUIGG
3063 PROFESSIONAL LAND SURVEYOR STATE OF ILLINOIS
VICTORVILLE, IL
LICENSE EXPIRES 11/30/08

PARCEL NO.	OWNER	TOTAL HOLDING	TOTAL ROW REQUIRED	AREA IN EXISTING ROADWAY	NET ROW REQUIRED	REMAINDER	TEMPORARY EASEMENT AREA	EASEMENT PURPOSE
3KC0019	BRENT SCHALHAMER, et al	0.0013 ha± [0.003 AC]±	0.0013 ha± [0.003 AC]±	13 m²± [140 SF]±	—	0.00 ha± [0.00 AC]±	—	—
3KC0020	BRENT A. SCHALHAMER	0.4229 ha± [1.045 AC]±	0.0093 ha± [0.023 AC]±	93 m²± [1,001 SF]±	0.0093 ha± [0.023 AC]±	0.4136 ha± [1,022 AC]±	—	—
3KC0021	WILLIAM W. DAVIS	1.3796 ha± [3.409 AC]±	0.0313 ha± [0.077 AC]±	313 m²± [3,369 SF]±	0.0313 ha± [0.077 AC]±	1.3483 ha± [3,332 AC]±	0.0050 ha± [0.012 AC]±	DRIVE RECONSTRUCTION
3KC0022	RICHARD GROESCH	1.595 m²± [17,168 SF]±	81 m²± [872 SF]±	—	81 m²± [872 SF]±	1,514 m²± [16,296 SF]±	—	—
3KC0023	JOHN H. CLEMENS, et al	3.6217 ha± [8.949 AC]±	0.0084 ha± [0.021 AC]±	84 m²± [901 SF]±	0.0084 ha± [0.021 AC]±	3.6133 ha± [8,927 AC]±	0.0018 ha± [0.005 AC]±	DRIVE RECONSTRUCTION
3KC0024	WILLMAN TOWNHOUSE ASSOC., LOT 1	1.581 m²± [17,017 SF]±	172 m²± [1,851 SF]±	—	172 m²± [1,851 SF]±	1,409 m²± [15,166 SF]±	—	—

ILLINOIS DEPT. OF TRANSPORTATION
RIGHT OF WAY PLAT

ROUTE FAP 326 (IL 47)
SECTION (5CS, 13C, 108, 109R)
COUNTY: KENDALL
JOB# R-93-014-94 PROJECT#
SEC 5 T 36 N, R 7 E OF 3RD P.M.
STA 19+675.000 TO STA 19+850.000
SCALE: 1:250 SHEET NO. 11 OF 36



NOTE: BEARINGS ARE BASED ON ILLINOIS STATE PLANE COORDINATE SYSTEM NAD 1983 - EAST ZONE