

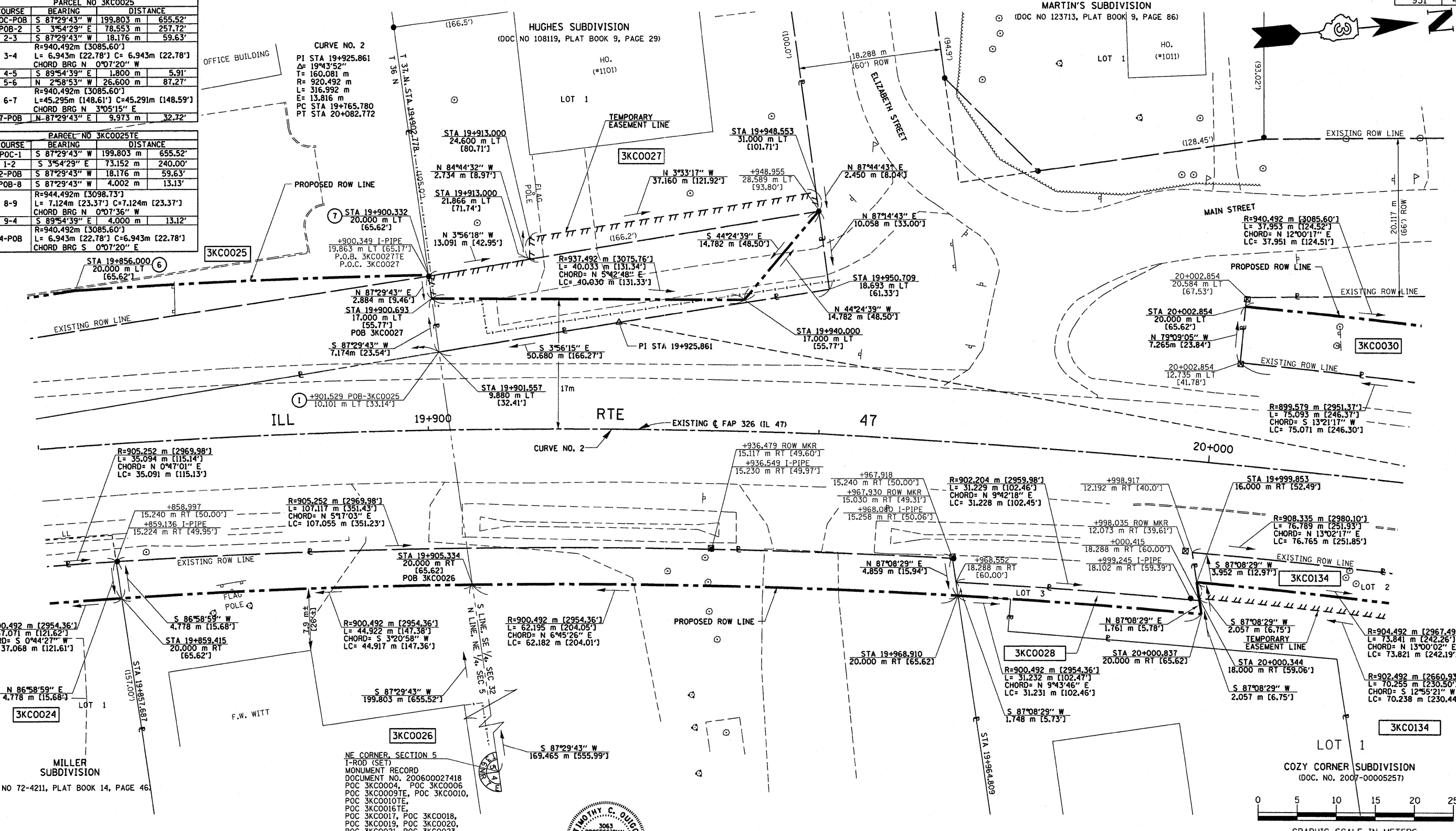
NE 1/4, SEC 5, T 36 N, R 7 E, 3RD PM LOT 2 SE 1/4, SEC 32, T 37 N, R 7 E, 3RD PM

PARCEL NO 3KCO025

COURSE	BEARING	DISTANCE
POC-POB	S 87°29'43" W	199.803 m
POB-2	S 3°54'29" E	78.553 m
2-3	S 87°29'43" W	18.176 m
3-4	R=940.492m [3085.60']	
	L= 6.943m [22.78'] C= 6.943m [22.78']	
	CHORD BRG N 0°07'20" W	
4-5	S 89°54'39" E	1.800 m
5-6	N 2°58'53" W	26.600 m
6-7	R=940.492m [3085.60']	
	L=45.295m [148.61'] C=45.291m [148.59']	
	CHORD BRG N 3°05'15" E	
7-POB	N-87°29'43" E	9.973 m

PARCEL NO 3KCO025TE

COURSE	BEARING	DISTANCE
POC-1	S 87°29'43" W	199.803 m
1-2	S 3°54'29" E	73.152 m
2-POB	S 87°29'43" W	18.176 m
POB-8	S 87°29'43" W	4.002 m
8-9	R=944.492m [3098.73']	
	L= 7.124m [23.37'] C=7.124m [23.37']	
	CHORD BRG N 0°07'36" W	
9-4	S 89°54'39" E	4.000 m
4-POB	R=940.492m [3085.60']	
	L= 6.943m [22.78'] C=6.943m [22.78']	
	CHORD BRG S 0°07'20" E	



DATE	BY

R.O.W. PLAT NO.	NOTEBOOK NO.

STATE OF ILLINOIS  
COUNTY OF KENDALL

I, TIMOTHY C. QUIGG, HEREBY CERTIFY THAT I AM A PROFESSIONAL LAND SURVEYOR OF THE STATE OF ILLINOIS, THAT THE SURVEY OF PROPOSED F.A.P. 326 (IL. 47) WAS MADE BY ME OR UNDER MY DIRECTION AND THAT THE SURVEY IS TRUE AND COMPLETE AS SHOWN TO THE BEST OF MY KNOWLEDGE AND BELIEF, THAT ALL MONUMENTS AND MARKS ARE OF THE CHARACTER AND OCCUPY THE POSITION SHOWN THEREON, AND ARE SUFFICIENT TO ENABLE THE SURVEY TO BE RETRACED.

DATE: \_\_\_\_\_ ILLINOIS PROFESSIONAL LAND SURVEYOR NUMBER 3063

SURVEY BOOK NOS.  
ROLL

NE CORNER, SECTION 5  
I-ROD (SE)  
MONUMENT RECORD  
DOCUMENT NO. 200600027418  
POC 3KCO004, POC 3KCO006  
POC 3KCO009TE, POC 3KCO010,  
POC 3KCO010TE,  
POC 3KCO016TE,  
POC 3KCO017, POC 3KCO018,  
POC 3KCO019, POC 3KCO020,  
POC 3KCO021, POC 3KCO023,  
POC 3KCO025, POC 3KCO026,  
POC 3KCO148TE,  
POC 3KCO149TE, POC 3KCO150,  
POC 3KCO150TE



LICENSE EXPIRES 11/30/08

AREAS SHOWN IN HECTARES [ACRES]  
AREAS SHOWN IN SQUARE METERS [SQUARE FEET]

PARCEL NO.	OWNER	TOTAL HOLDING	TOTAL ROW REQUIRED	AREA IN EXISTING ROADWAY	NET ROW REQUIRED	REMAINDER	TEMPORARY EASEMENT AREA	EASEMENT PURPOSE
3KCO025	CASTLE BANK, N.A., TRUSTEE	0.8094 ha± [2,000 AC]±	0.1123 ha± [0,278 AC]±	0.0806 ha± [0,199 AC]±	0.6971 ha± [0,079 AC]±	0.6971 ha± [0,079 AC]±	28 m² ± [301 SF]±	DRIVE RECONSTRUCTION
3KCO026	CA YORKVILLE, LLC	16,082 m² ± [173,105 SF]±	510 m² ± [5,490 SF]±	510 m² ± [5,490 SF]±	15,572 m² ± [167,615 SF]±	15,572 m² ± [167,615 SF]±	—	—
3KCO027	JOANNE M. RIEMENSCHNEIDER, TRUSTEE	2,094 m² ± [22,540 SF]±	215 m² ± [2,314 SF]±	—	1,879 m² ± [20,226 SF]±	1,879 m² ± [20,226 SF]±	391 m² ± [4,209 SF]±	DRIVE RECONSTRUCTION AND GRADING
3KCO028	STATE BANK OF ILLINOIS, TR#1-1344	5,381 m² ± [57,918 SF]±	54 m² ± [576 SF]±	—	5,327 m² ± [57,342 SF]±	5,327 m² ± [57,342 SF]±	—	—

NOTE: BEARINGS ARE BASED ON ILLINOIS STATE PLANE COORDINATE SYSTEM NAD 1983 - EAST ZONE

ILLINOIS DEPT. OF TRANSPORTATION  
RIGHT OF WAY PLAT

ROUTE FAP 326 (IL 47)  
SECTION (5CS, 13C, 108, 109R)  
COUNTY : KENDALL  
JOB# R-93-014-94 PROJECT#  
SEC 5 T 36 N, R 7 E OF 3RD P.M.  
SEC 32 T 37 N, R 7 E OF 3RD P.M.  
STA 19+850.000 TO STA 20+025.000  
SCALE: 1:250 SHEET NO. 12 OF 36