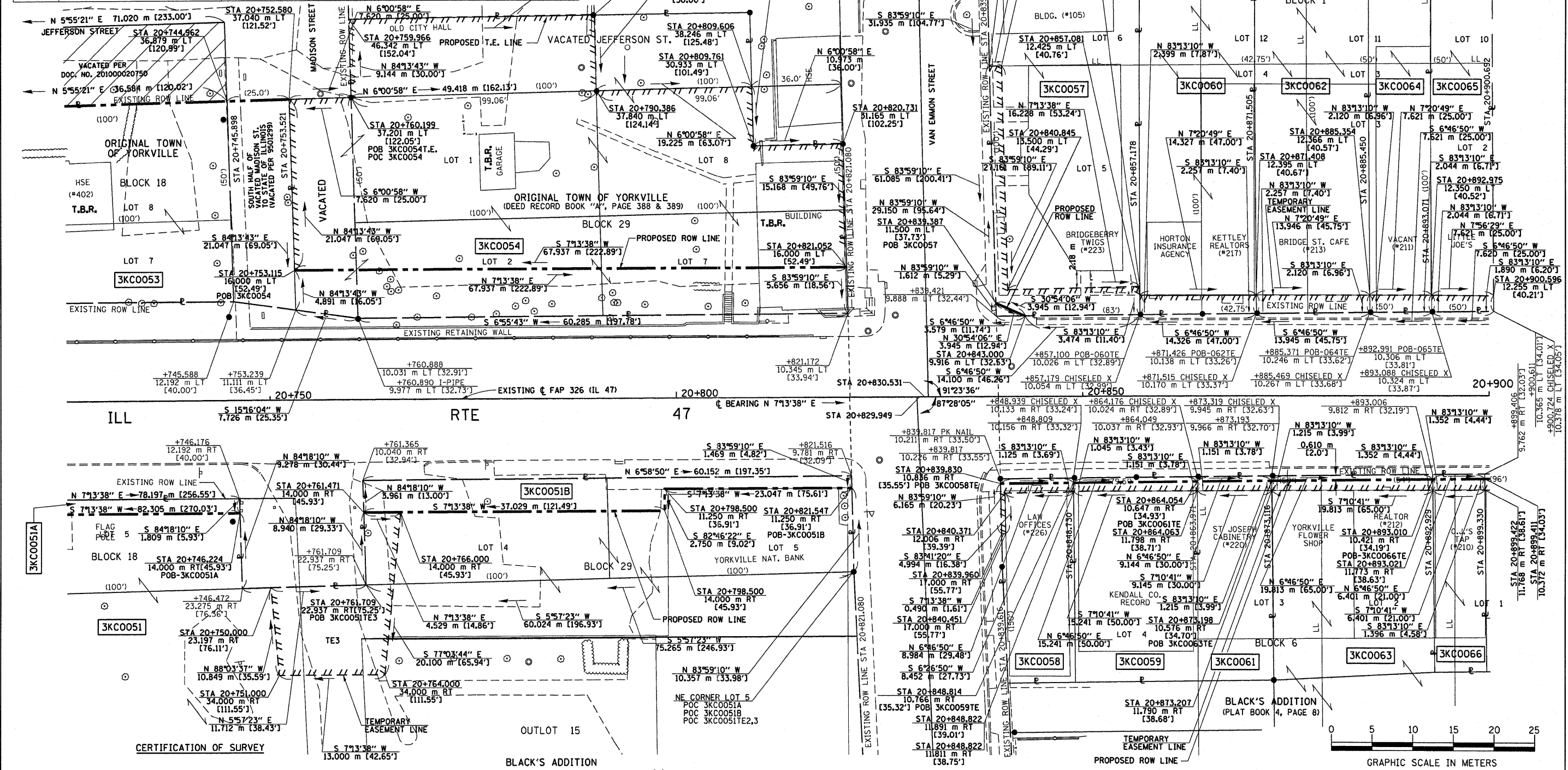


NE 1/4, SEC 32, T 37 N, R 7 E, 3RD PM

PARCEL NO.	OWNER	AREA OF WHOLE	AREA TAKEN	AREA REMAIN	AREA OF EASEMENT	EASEMENT PURPOSE
3KCO054	JEFFERSON PROPERTIES, LTD	2,697 m <sup>2</sup> ± (29,031 SF) ±	392 m <sup>2</sup> ± (4,220 SF) ±	2,305 m <sup>2</sup> ± (24,811 SF) ±	1,675 m <sup>2</sup> ± (18,030 SF) ±	BUILDING REMOVAL, SLOPE EXCAVATION, GRADING & SHAPING
3KCO057	ROBERT R. DEARBORN, JR. et ux	700 m <sup>2</sup> ± (7,535 SF) ±	3 m <sup>2</sup> ± (32 SF) ±	697 m <sup>2</sup> ± (7,503 SF) ±	101 m <sup>2</sup> ± (1,087 SF) ±	SIDEWALK & GRADING
3KCO060	THE OLD SECOND NATIONAL BANK OF AURORA, TRUST NO. 6369	676 m <sup>2</sup> ± (7,276 SF) ±	---	---	33 m <sup>2</sup> ± (355 SF) ±	SIDEWALK CONSTRUCTION
3KCO062	ROBERT R. DEARBORN, JR., et ux, TR	699 m <sup>2</sup> ± (7,524 SF) ±	---	---	31 m <sup>2</sup> ± (334 SF) ±	SIDEWALK CONSTRUCTION
3KCO064	ROBERT DEARBORN, et ux	436 m <sup>2</sup> ± (4,693 SF) ±	---	---	16 m <sup>2</sup> ± (172 SF) ±	SIDEWALK CONSTRUCTION
3KCO065	GRW PROPERTIES, LLC	438 m <sup>2</sup> ± (4,715 SF) ±	---	---	15 m <sup>2</sup> ± (161 SF) ±	SIDEWALK CONSTRUCTION



BY	DATE

R.O.W. PLAT	NOTEBOOK NO.

STATE OF ILLINOIS  
 COUNTY OF KENDALL

I, TIMOTHY C. QUIGG, HEREBY CERTIFY THAT I AM A PROFESSIONAL LAND SURVEYOR OF THE STATE OF ILLINOIS, THAT THE SURVEY OF PROPOSED F.A.P. 326 (IL. 47) WAS MADE BY ME OR UNDER MY DIRECTION AND THAT THE SURVEY IS TRUE AND COMPLETE AS SHOWN TO THE BEST OF MY KNOWLEDGE AND BELIEF, THAT ALL MONUMENTS AND MARKS ARE OF THE CHARACTER AND OCCUPY THE POSITION SHOWN THEREON, AND ARE SUFFICIENT TO ENABLE THE SURVEY TO BE RETRACED.

DATE: \_\_\_\_\_ ILLINOIS PROFESSIONAL LAND SURVEYOR NUMBER 3063  
 SURVEY BOOK NOS. \_\_\_\_\_



NW 1/4, SEC 33, T 37 N, R 7 E, 3RD PM

AREAS SHOWN IN SQUARE METERS [SQUARE FEET]

PARCEL NO.	OWNER	TOTAL HOLDING	TOTAL ROW REQUIRED	REMAINDER	TEMPORARY EASEMENT AREA	EASEMENT PURPOSE
3KCO058	DALLAS C. INGENUNSON, et al	231 m <sup>2</sup> ± (2,486 SF) ±	6 m <sup>2</sup> ± (65 SF) ±	225 m <sup>2</sup> ± (2,421 SF) ±	13 m <sup>2</sup> ± (140 SF) ±	SIDEWALK CONSTRUCTION
3KCO059	JEFFREY A. FARREN, et ux	383 m <sup>2</sup> ± (4,123 SF) ±	9 m <sup>2</sup> ± (97 SF) ±	374 m <sup>2</sup> ± (4,026 SF) ±	17 m <sup>2</sup> ± (183 SF) ±	SIDEWALK CONSTRUCTION
3KCO061	GREGORY A. MILLEN	230 m <sup>2</sup> ± (2,476 SF) ±	6 m <sup>2</sup> ± (65 SF) ±	224 m <sup>2</sup> ± (2,411 SF) ±	11 m <sup>2</sup> ± (118 SF) ±	SIDEWALK CONSTRUCTION
3KCO063	MASONIC BUILDING ASSOCIATION OF YORKVILLE	964 m <sup>2</sup> ± (10,376 SF) ±	12 m <sup>2</sup> ± (129 SF) ±	952 m <sup>2</sup> ± (10,247 SF) ±	25 m <sup>2</sup> ± (269 SF) ±	SIDEWALK CONSTRUCTION
3KCO066	GERALD A. JOHNSON, et ux	156 m <sup>2</sup> ± (1,679 SF) ±	4 m <sup>2</sup> ± (43 SF) ±	152 m <sup>2</sup> ± (1,636 SF) ±	9 m <sup>2</sup> ± (97 SF) ±	SIDEWALK CONSTRUCTION

ILLINOIS DEPT. OF TRANSPORTATION  
 RIGHT OF WAY PLAT

ROUTE FAP 326 (IL 47)  
 SECTION (5CS, 13C, 108, 109)R  
 COUNTY : KENDALL  
 JOB# R-93-014-94 PROJECT#  
 SEC 32 & 33 T 37 N, R 7 E OF 3RD P.M.  
 STA 20+725.000 TO STA 20+900.000  
 SCALE: 1:250 SHEET NO. 17 OF 36