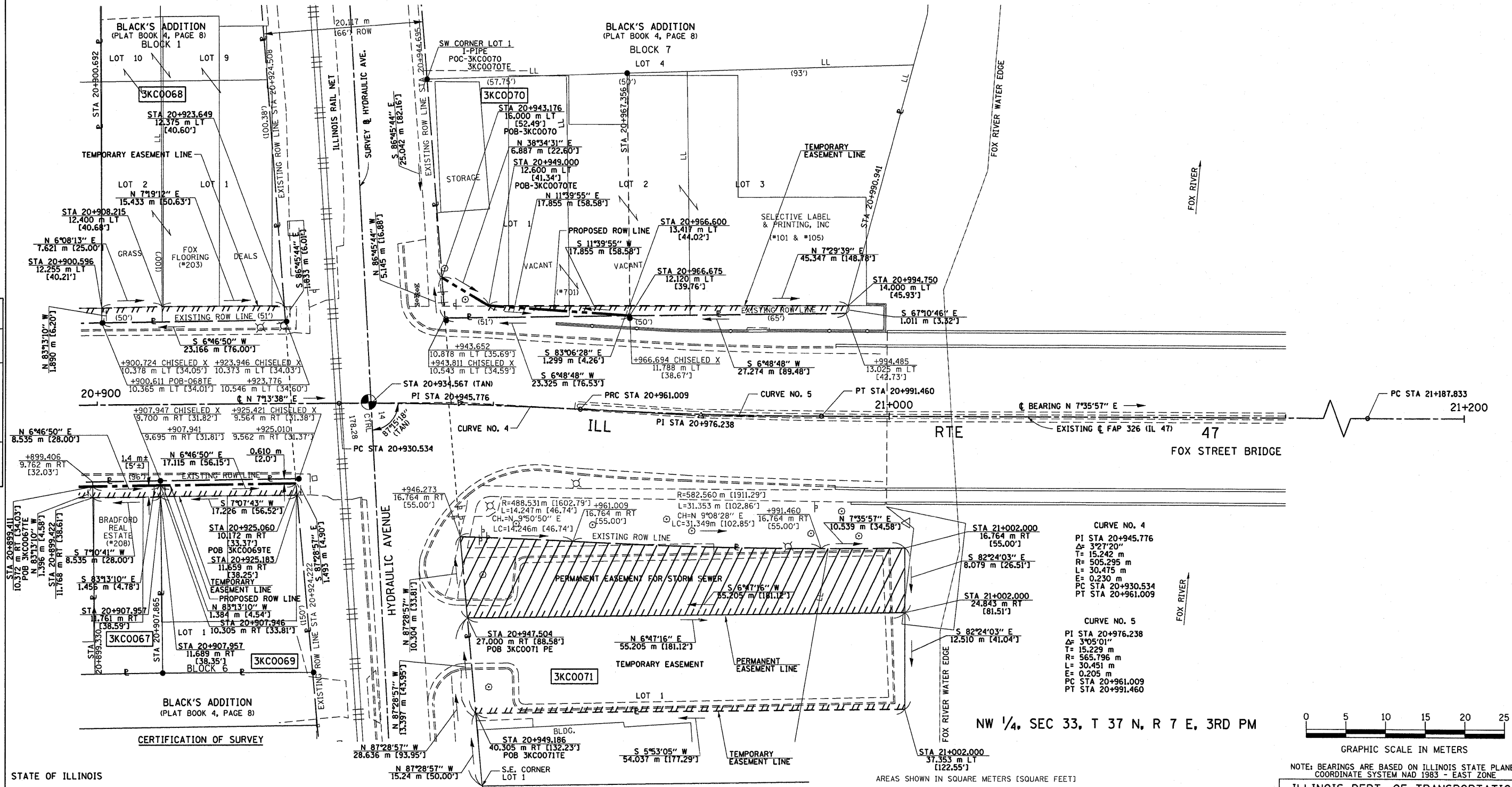


NE 1/4, SEC 32, T 37 N, R 7 E, 3RD PM

TOTAL SHEETS	SHEET NO.
931	504



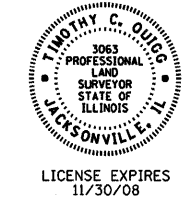
BY	DATE
R.O.W. PLAT	NOTEBOOK NO.

STATE OF ILLINOIS
 COUNTY OF KENDALL

I, TIMOTHY C. QUIGG, HEREBY CERTIFY THAT I AM A PROFESSIONAL LAND SURVEYOR OF THE STATE OF ILLINOIS, THAT THE SURVEY OF PROPOSED F.A.P. 326 (IL. 47) WAS MADE BY ME OR UNDER MY DIRECTION AND THAT THE SURVEY IS TRUE AND COMPLETE AS SHOWN TO THE BEST OF MY KNOWLEDGE AND BELIEF, THAT ALL MONUMENTS AND MARKS ARE OF THE CHARACTER AND OCCUPY THE POSITION SHOWN THEREON, AND ARE SUFFICIENT TO ENABLE THE SURVEY TO BE RETRACED.

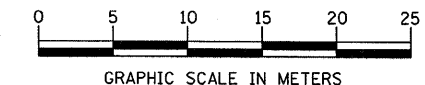
DATE: _____ ILLINOIS PROFESSIONAL LAND SURVEYOR NUMBER 3063

SURVEY BOOK NOS. _____



LICENSE EXPIRES 11/30/08

NW 1/4, SEC 33, T 37 N, R 7 E, 3RD PM



NOTE: BEARINGS ARE BASED ON ILLINOIS STATE PLANE COORDINATE SYSTEM NAD 1983 - EAST ZONE

ILLINOIS DEPT. OF TRANSPORTATION
 RIGHT OF WAY PLAT

ROUTE FAP 326 (IL 47)
 SECTION (5CS, 13C, 108, 109)R
 COUNTY : KENDALL
 JOB# R-93-014-94 PROJECT#
 SEC 32 & 33 T 37 N, R 7 E OF 3RD P.M.
 STA 20+900.000 TO STA 21+200.000
 SCALE: 1:250 SHEET NO. 18 OF 36

PARCEL NO.	OWNER	TOTAL HOLDING	TOTAL ROW REQUIRED	REMAINDER	TEMPORARY EASEMENT AREA	EASEMENT PURPOSE
3KCO067	DAN KRAMER, TRUSTEE, TRUST NO. 31	208 m ² ± [2,239 SF]±	5 m ² ± [54 SF]±	203 m ² ± [2,185 SF]±	12 m ² ± [129 SF]±	SIDEWALK CONSTRUCTION
3KCO068	UNION BANK, TRUSTEE	1,218 m ² ± [13,110 SF]±	—	—	44 m ² ± [474 SF]±	SIDEWALK CONSTRUCTION
3KCO069	AMENT III, LLC	435 m ² ± [4,662 SF]±	10 m ² ± [108 SF]±	425 m ² ± [4,574 SF]±	25 m ² ± [269 SF]±	SIDEWALK CONSTRUCTION
3KCO070	BRIDGE STREET PLAZA, INC	7231 m ² ± [77,833 SF]±	32 m ² ± [344 SF]±	7199 m ² ± [77,489 SF]±	43 m ² ± [463 SF]±	SIDEWALK & GRADING
3KCO071	THE UNITED CITY OF THE VILLAGE OF YORKVILLE	1,203 m ² ± [12,948 SF]±	PERMANENT EASEMENT 496 m ² ± [5,339 SF]±	—	707 m ² ± [7607 SF]±	P.E. - STORM DRAINAGE T.E. - PARKING LOT REHABILITATION