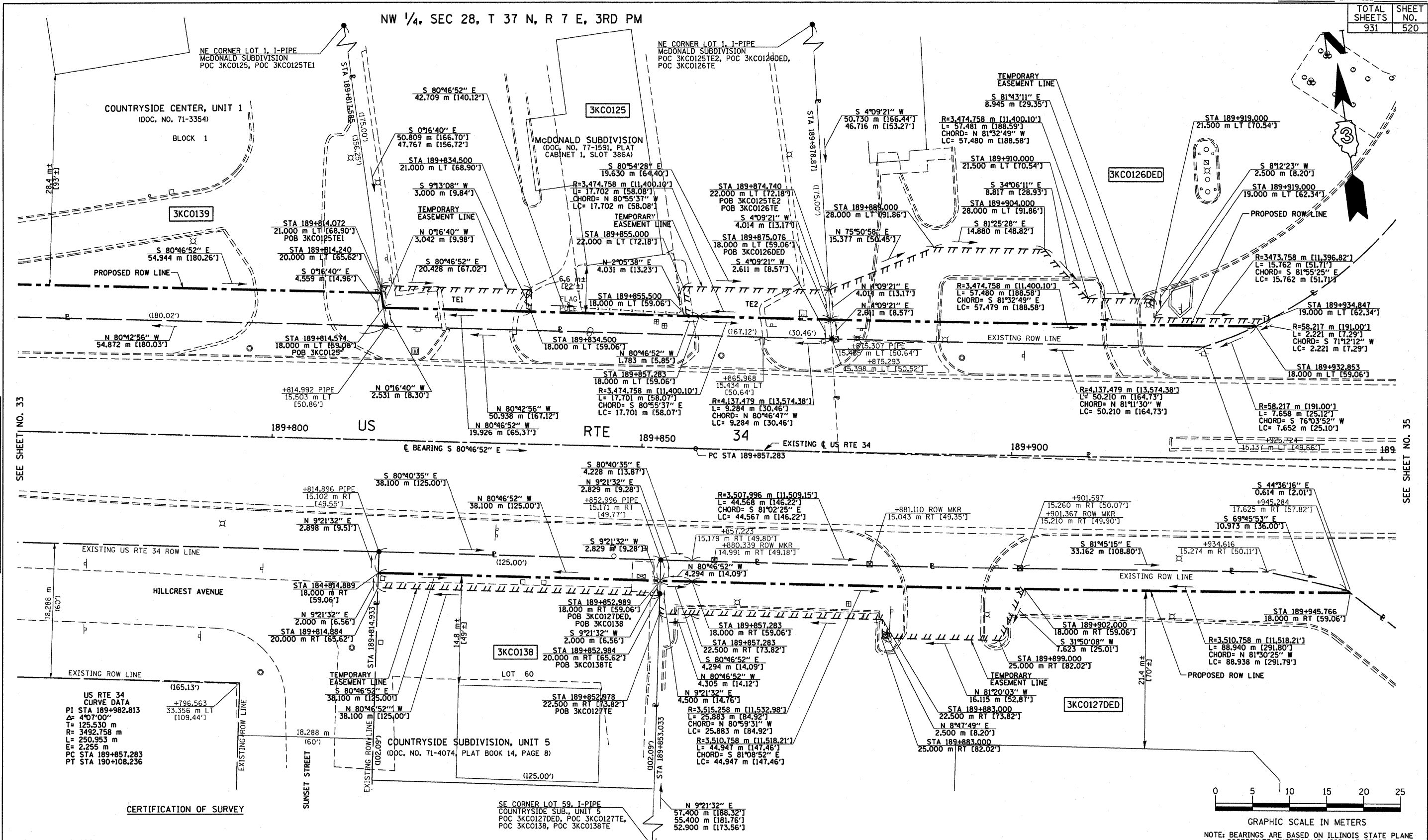


NW 1/4, SEC 28, T 37 N, R 7 E, 3RD PM



BY	DATE
R.O.W. PLAT	NOTEBOOK NO.

SEE SHEET NO. 33

SEE SHEET NO. 35

**US RTE 34 CURVE DATA**  
 PI STA 189+982.813  
 Δ = 4°07'00"  
 T = 125.530 m  
 R = 3492.758 m  
 L = 250.953 m  
 E = 2.255 m  
 PC STA 189+857.283  
 PT STA 190+108.236

**CERTIFICATION OF SURVEY**

STATE OF ILLINOIS  
 COUNTY OF KENDALL

I, TIMOTHY C. QUIGG, HEREBY CERTIFY THAT I AM A PROFESSIONAL LAND SURVEYOR OF THE STATE OF ILLINOIS, THAT THE SURVEY OF PROPOSED F.A.P. 326 (IL. 47) WAS MADE BY ME OR UNDER MY DIRECTION AND THAT THE SURVEY IS TRUE AND COMPLETE AS SHOWN TO THE BEST OF MY KNOWLEDGE AND BELIEF. THAT ALL MONUMENTS AND MARKS ARE OF THE CHARACTER AND OCCUPY THE POSITION SHOWN THEREON, AND ARE SUFFICIENT TO ENABLE THE SURVEY TO BE RETRACED.

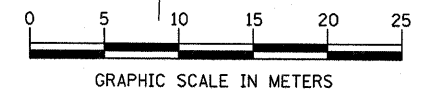


DATE: \_\_\_\_\_  
 ILLINOIS PROFESSIONAL LAND SURVEYOR NUMBER 3063  
 SURVEY BOOK NOS. R034

LICENSE EXPIRES 11/30/08

**AREAS SHOWN IN SQUARE METERS [SQUARE FEET]**

PARCEL NO.	OWNER	TOTAL HOLDING	TOTAL ROW REQUIRED	REMAINDER	TEMPORARY EASEMENT AREA	EASEMENT PURPOSE
3KC0125	MCDONALD'S CORPORATION	3,293 m <sup>2</sup> ± [35,445 SF] ±	153 m <sup>2</sup> ± [1,647 SF] ±	3,140 m <sup>2</sup> ± [33,798 SF] ±	TE#1, 61 m <sup>2</sup> ± [657 SF] ± TE#2, 78 m <sup>2</sup> ± [840 SF] ±	TE#1 & TE#2-DRIVE RECONSTRUCTION & GRADING
3KC0126DED	CHARTER NATIONAL BANK AND TRUST COMPANY, AS SUCCESSOR TRUSTEE, TRUST NO. 333	13,384 m <sup>2</sup> ± [144,064 SF] ±	148 m <sup>2</sup> ± [1,593 SF] ±	—	334 m <sup>2</sup> ± [3,595 SF] ±	DRIVE RECONSTRUCTION & GRADING
3KC0127DED	CHICAGO TITLE LAND TRUST COMPANY, TRUST NO. 5876	12,089 m <sup>2</sup> ± [130,124 SF] ±	244 m <sup>2</sup> ± [2,628 SF] ±	—	259 m <sup>2</sup> ± [2,788 SF] ±	DRIVE RECONSTRUCTION & GRADING
3KC0138	EDA M. COLEMAN, TRUSTEE	1,186 m <sup>2</sup> ± [12,766 SF] ±	109 m <sup>2</sup> ± [1,173 SF] ±	1,077 m <sup>2</sup> ± [11,593 SF] ±	76 m <sup>2</sup> ± [818 SF] ±	GRADING
3KC0139	CASTLE BANK, N.A., TRUSTEE	5,690 m <sup>2</sup> ± [61,249 SF] ±	245 m <sup>2</sup> ± [2,637 SF] ±	5,445 m <sup>2</sup> ± [58,612 SF] ±	—	—



NOTE: BEARINGS ARE BASED ON ILLINOIS STATE PLANE COORDINATE SYSTEM NAD 1983 - EAST ZONE

**ILLINOIS DEPT. OF TRANSPORTATION  
 RIGHT OF WAY PLAT**

ROUTE FAP 326 (IL 47)  
 SECTION (5CS, 13C, 10B, 109)R  
 COUNTY : KENDALL  
 JOB# R-93-014-94 PROJECT#  
 SEC 28 T 37 N, R 7 E OF 3RD P.M.  
 STA 189+775.000 TO STA 189+950.000  
 SCALE: 1:250 SHEET NO. 34 OF 36