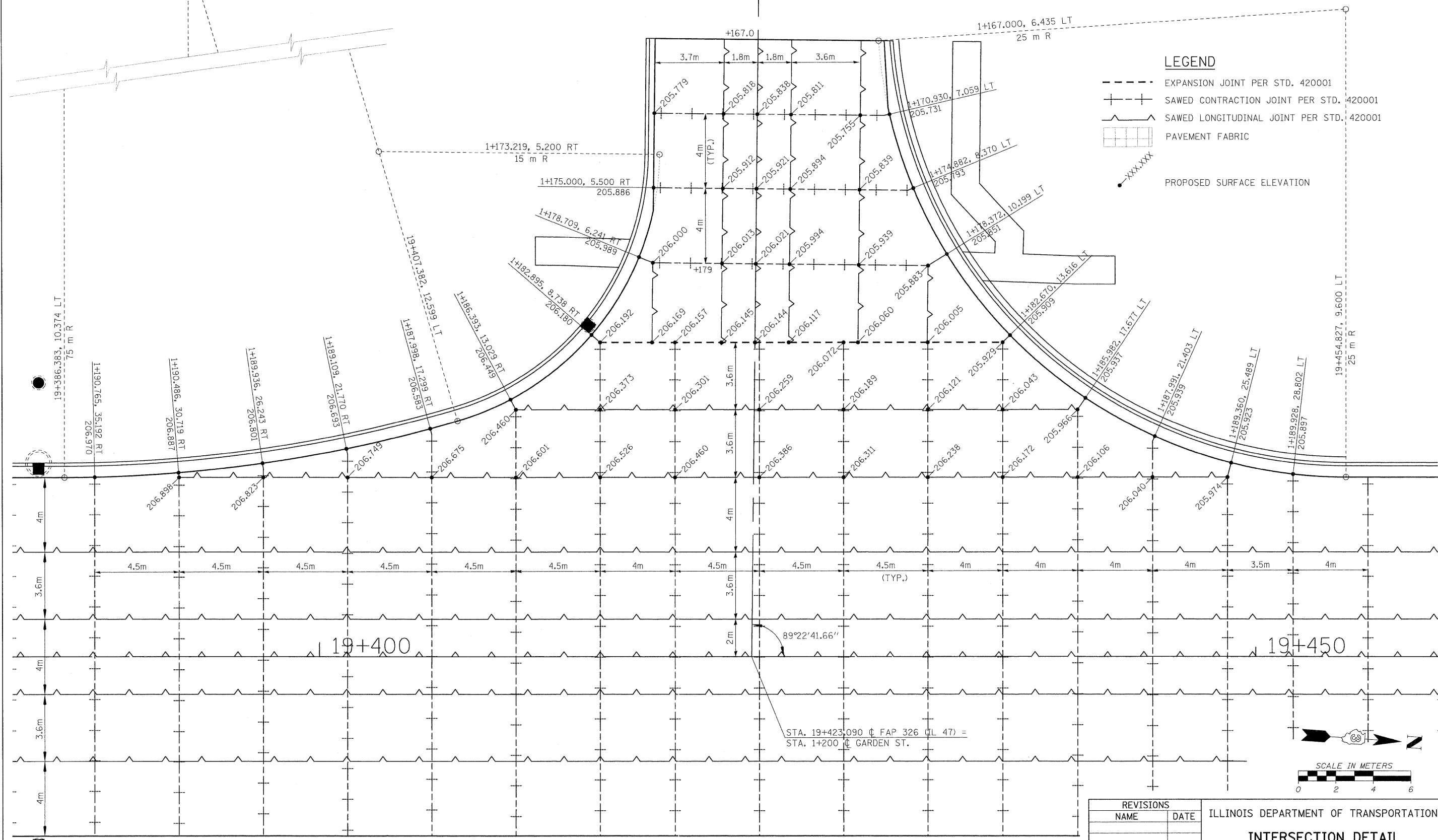


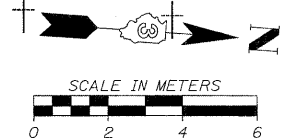
F.A.P. RTE.	SECTION	COUNTY	TOTAL SHEETS	SHEET NO.
326	(5CS,13C,108,109)R	KENDALL	931	525
STA.		TO STA.		
FED. ROAD DIST. NO.		ILLINOIS FED. AID PROJECT		

LEGEND

- EXPANSION JOINT PER STD. 420001
- +--+ SAWED CONTRACTION JOINT PER STD. 420001
- SAWED LONGITUDINAL JOINT PER STD. 420001
- [Grid Pattern] PAVEMENT FABRIC
- XXX.XXX PROPOSED SURFACE ELEVATION



STA. 19+423.090 (FAP 326 (IL 47)) =
 STA. 1+200 (GARDEN ST.)



REVISIONS		ILLINOIS DEPARTMENT OF TRANSPORTATION
NAME	DATE	
		INTERSECTION DETAIL FAP 327 (IL 47) & GARDEN STREET DRAWN BY EDW CHECKED BY DATE

FILE: 5251D_GenSt.dgn
 PLOTTED: 8/11/2011

HMG JOB NO. 5122